

Chevrolet 6.0L: G, 2001+, A Pump, High Pressure, Side Port

BOLT PACKAGES:

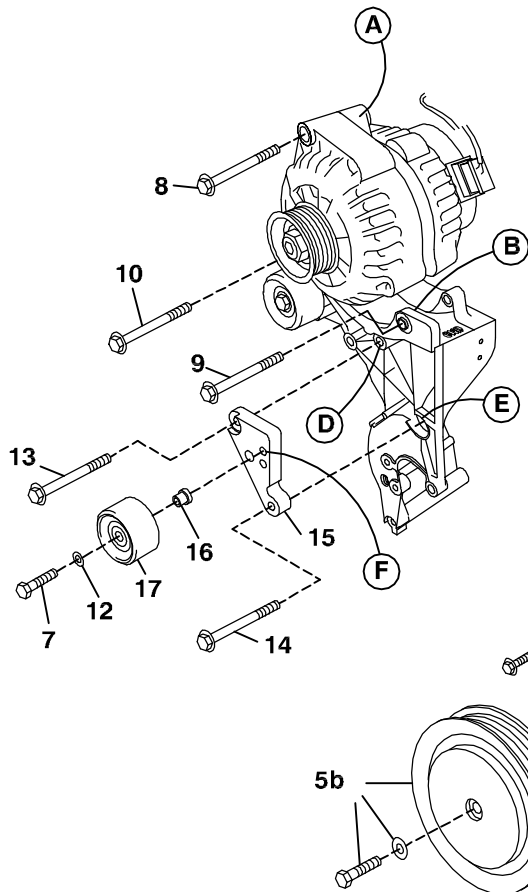
BRACKET	711356 (Inc. item 6, 8)			
IDLER PULLEY	711368 (Inc. item 7, 12, 16)			
IDLER BRKT	711370 (Inc. item 13, 14)			
TENSIONER	None			
CRANK PULLEY	None	1-5-11	ISSUE DATE	NC 1-5-11
				REVISION DATE

Item Part No. Description

1.	711399	Engine bracket	12.	110676	3/8 Flat washer
2.	---	---	13.	110487	M10 x 120 x 1.5 Bolt
3.	711906	Pump plate	14.	110181	M10 x 130 x 1.5 Bolt
4.	*	Pump, side port	15.	711365	Idler bracket
5.	742016	Clutch	16.	711366	Idler bushing
6.	110465	3/8-16 x 1 1/4 Socket head bolt	17.	740249	Idler, 2.50 Dia. for 160 amp alternator
7.	110526	M10 x 40 x 1.5 Bolt		740294	Idler, 3.00 Dia. for 130 amp alternator
8.	110217	M10 x 70 x 1.5 Bolt	18.	740336	Belt/Dayco 5061223
9.	OEM	Bolt	19.	**	Insulation, pressure hose
10.	OEM	Bolt	20.	**	Insulation, suction hose
11.	110440	3/8-16 x 1 Flange Bolt			

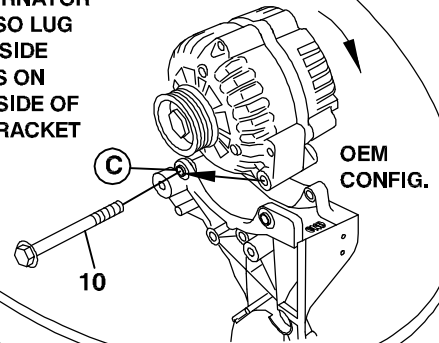
FIG. 1

BELT DIAGRAM

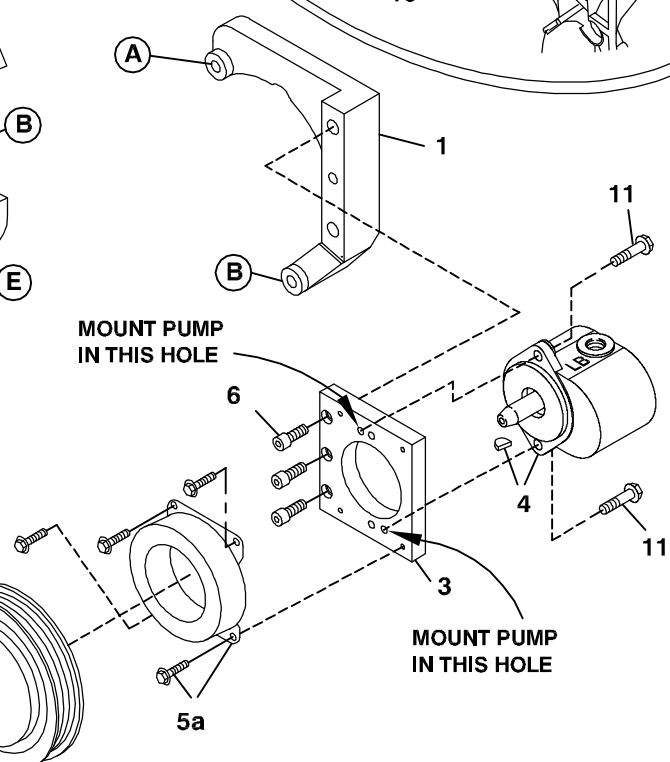


ROTATE ALTERNATOR
CLOCKWISE SO LUG
ON DRIVER'S SIDE
NOW MOUNTS ON
PASSENGER SIDE OF
MOUNTING BRACKET

FIG. 2



MOUNT PUMP
IN THIS HOLE



MOUNT PUMP
IN THIS HOLE

FIG. 3

BELT DIAGRAM

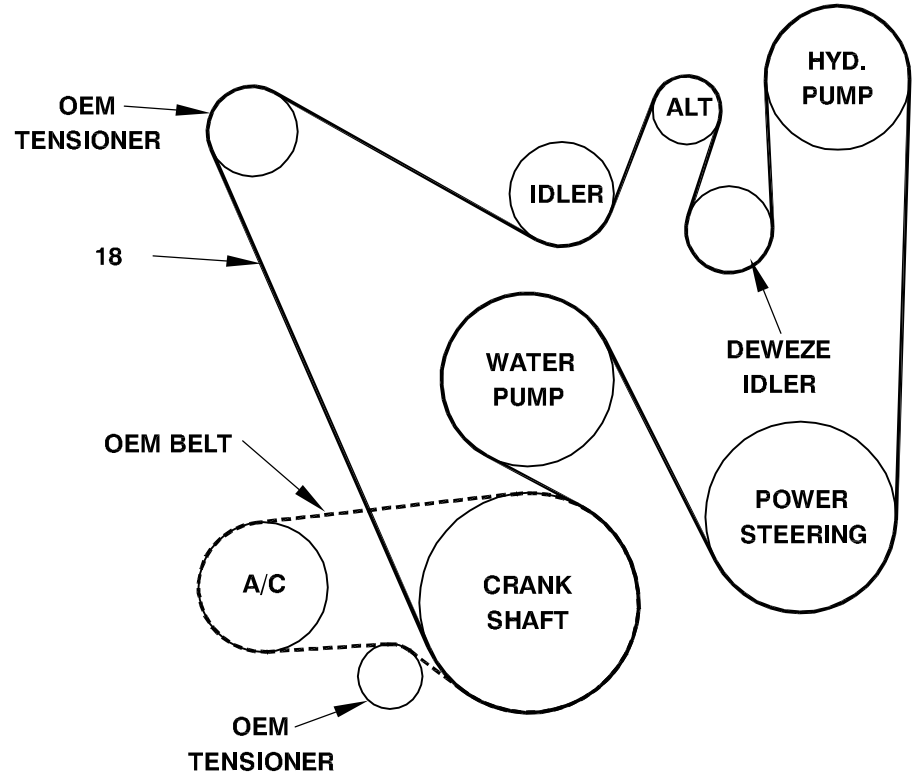


FIG. 3

BRACKET INSTALLATION

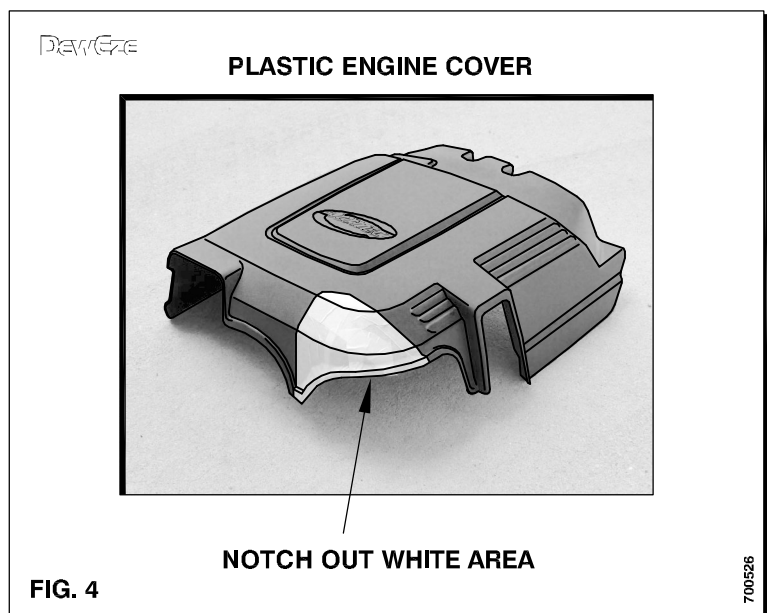


FIG. 4

DewEze Clutch Pump Kit 700526

Chevy 6.0L, A Pump, High Pressure, 2001 +

INSTALLATION INSTRUCTIONS

- The installation of this kit requires trained decision-making concerning clearances, tying components together, rerouting, or relocating OEM components, etc. It is impossible to describe all of the clearance and vibration points, etc. in the installation instructions. Therefore, the technician must exercise professional judgment to achieve the best quality installation.**
- Disconnect the battery.
- Remove plastic cover on top of engine. Notch out the corner as shown in Fig. 3.
- Unbolt the alternator. Rotate it clockwise so the alternator lug that was on the driver's side of the mounting bracket is now on the passenger side of the mounting bracket. See Fig. 2. Thread the OEM bolt (10) that was originally in that hole back into the same location to mount the alternator. Do not tighten it yet.
- Some engines have a coil pack bracket that interferes with the positive alternator post. Remove a portion of this bracket if there is contact at this location, while maintaining structural integrity of bracket. See photograph to right.
- Attach the pump plate (3) to the engine bracket (1) with three 3/8 x 1 1/4 socket head bolts (6).
- Bolt pump (4) onto pump plate (3) with two 3/8 x 1 1/4 bolts (11) and two 3/8 flat washers (12). Torque to 20 ft-lb. Attach coil (5a) with four 1/4 x 1/2 flange bolts supplied with clutch. Torque these to 6 ft-lb. Attach clutch pulley (5b) to pump shaft with 5/16NF x 1 1/4 bolt and heavy washer supplied with clutch. Torque to 14 ft-lb.
- Insert the lower bracket between the lugs on the alternator bracket at location B with the OEM bolt (9) taken from this location. Insert the M10 x 70 bolt (8) into the top hole in the alternator and thread into the DewEze bracket at location A. Tighten these bolts and the OEM bolt at location C.
- Remove OEM bolts at locations D and E and discard. If your truck has the 160 amp alternator, insert the idler bushing (16) into the back of the 2.50" stamped idler pulley (17). If your truck has the 130 amp alternator, insert the idler bushing (16) into the back of the 3.00" machined solid idler pulley (17). Insert the M10 x 40 bolt (7) through the 3/8 flat washer (12), through the front of the idler pulley with bushing and into the top threaded hole at location F in the idler bracket (15). Attach the idler bracket to the alternator bracket with the M10 x 120 bolt (13) at location D and the M10 x 130 bolt (14) at location E.
- Slip the small hose insulation sheath (19) over the pressure hose. Slip the large hose insulation sheath (20) over the suction hose. Place the sheaths where the hoses run close to the exhaust to protect the hoses from the heat. Fasten the sheaths to the hoses with the nylon cable ties. Route the hoses back to the firewall and down running along side the frame.
- Install the belt (18). Replace the top plastic engine cover.
- Connect the battery.
- Run the engine and check for any clearance or alignment problems. Adjust as needed.

