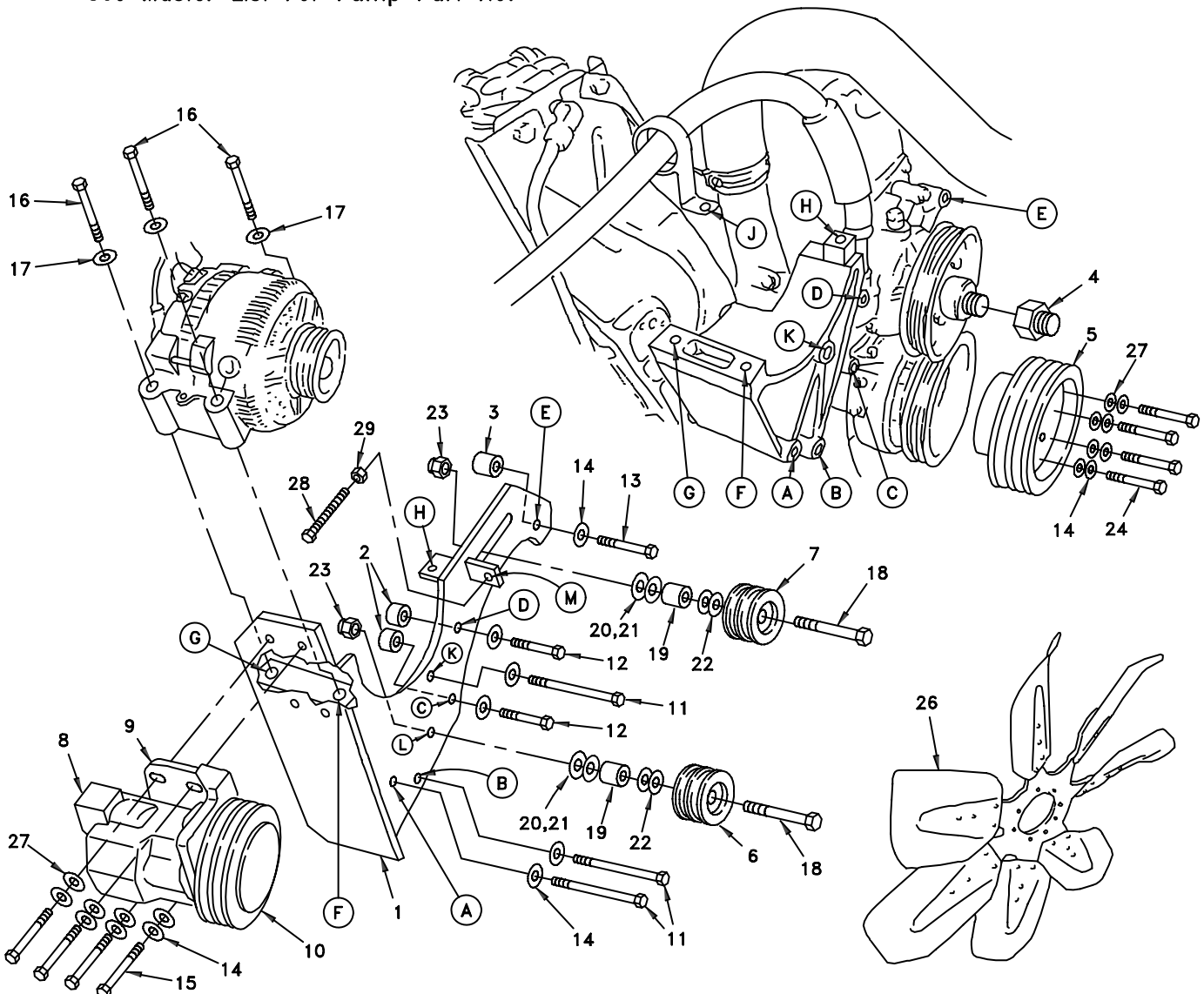


DEWEZE Clutch Pump Kit

710052	Bracket Assy. (Inc. item 1)	Kit No.	700065
710787	Bracket Bolt Pkg. (Inc. items 2,3,11-17,28,29)	Make	Ford
710447	Pulley Bolt Pkg. (Inc. items 14,24,27)	Engine	7.3L
710360	Idler Bolt Pkg. (Inc. items 18-23) 2 Reqd.	Fuel	Diesel
None	Fan Spacer Bolt Pkg.	Year	1992.5-94
		Options	A/C
		Revised	C 3-17-95

ITEM	PART #	DESCRIPTION
1.	710052	Bracket, Pump Mount
2.	710785	Spacer, .725"
3.	710786	Spacer, 1.20"
4.	700165	Fan Spacer
5.	740009	Crankshaft Pulley
6.	740133	Idler Pulley, Back-Wrap
7.	740042	Idler Pulley, V-groove
8.	*	Pump
9.	710353	Footmount
10.	740037	Clutch, Standard
	740038	Clutch, Heavy duty
11.	710782	3/8 x 6 NC Bolt Gr.8
12.	710661	3/8 X 1 3/4 NC Bolt Gr.8
13.	710704	3/8 X 2 1/2 NC Bolt Gr.8
14.	510271	3/8 Lock Washer
15.	510113	3/8 x 1 1/4 NC Bolt
16.	710784	10mm X 85mm X 1.5 Bolt
17.	510260	7/16 Lock Washer
18.	310343	5/8 x 4 NC Bolt
19.	710233	Spacer, 1.50"
20.	510255	5/8 Machine Bushing (10 ga.)
21.	510256	5/8 Machine Bushing (14 ga.)
22.	310344	5/8 Flat Washer
23.	710113	5/8 Lock Nut
24.	710392	3/8 x 3 1/4 NC Bolt
25.	740066	V-Belt, Gates A71
26.	700136	Fan
27.	510365	3/8 Flat Washer
28.	510092	1/2 x 4 NC Tap Bolt
29.	710534	1/2 NC Jam Nut

* See Master List For Pump Part No.



(A) Denotes bolt holes in engine to locate corresponding holes in Pump Brkt.

Ford 7.3L Diesel
1992.5-93 Serp. Belt
Clutch Pump Kit #700065

INSTALLATION INSTRUCTIONS

NOTE: Suction hose to pump must be a wire braid hose; minimum 1" I.D. for 7 & 9 gpm pumps; 1-1/2" I.D. for 12 & 17 gpm pumps. Installations with smaller suction hoses will void the pump warranty.

1. Remove Fan and Fan Shroud.
2. Remove four 3/8" Bolts from Crankshaft Pulley.

NOTE: Do not remove Ring that is under bolts.
3. Install the DewEze Crankshaft Pulley (5) onto the OEM Pulley using four 3/8" X 3 1/4" Bolts (24), flat washers(28), and lock washers(14).
4. Remove the OEM serpentine belt.
5. Remove positive battery cables from both batteries to prevent shorting of loose cables.
6. Remove the positive battery cable from the starter solenoid. Unplug the wiring connector on wiring bundle going to alternator, and lay wires back over engine, out of the way.
7. Move battery on passenger side as far as possible toward fender.
8. Remove three OEM alternator mounting bolts. Lay alternator back out of the way.
9. Remove three OEM alternator bracket bolts and remove bracket.
10. Lower DewEze pump bracket (1) into place. Start 3/8" x 2 1/2" Bolt Grade 8 (13) at hole (E), using 1.200" spacer (3) between bracket and engine. Leave bolt loose.
11. Lower OEM alternator bracket behind the DewEze bracket and install three 3/8" X 6" grade 8 Bolts (11) at holes (A), (B), and (K). Leave bolts loose.
12. Install two 3/8" X 1 3/4" Gr. 8 Bolts (12) at holes (C) and (D), using .725" Spacers (2) between bracket and engine.
13. Set the alternator in place, over the DewEze bracket, and install with three 10mm X 85mm X 1.5 Bolts (16), with the heater hose clamp (J) on the bolt at hole (J).
14. Tighten the three 10mm X 85mm bolts into alternator first. Then tighten all bracket bolts.
15. Install OEM serpentine belt.
16. Install Clutch (coil only), and Pump (8) onto Footmount (9).

Install this assembly onto Bracket using four 3/8" X 1 1/4" NC bolts(15). Leave bolts loose enough to adjust pump alignment. Install Clutch Pulley onto pump shaft. Using a straight edge, align clutch pulley with crankshaft pulley, and tighten pump mounting bolts.

NOTE: Move the battery cable running down front fender well, to behind the pump assembly.

17. Install the lower backwrap idler pulley (6) at Hole (L) using 5/8" X 4" Bolt (18), 1.5" spacer (19), and washers (20,21,22) as needed to align pulley with crankshaft pulley.
18. Install upper V-idler pulley (7) in slotted hole using 5/8" X 4" Bolt (18), 1.5" spacer (19), and washers (20,21,22,) as needed to align pulley with crankshaft pulley.
19. Place 1/2" jam nut (29) onto 1/2" x 4" tap bolt (28) and thread into hole (M).
20. Install two A71 V-belts (25) and tighten top idler pulley by tightening bolt (28) against idler pulley spacer. Tighten jam nut (29).

NOTE: Radiator may have braces on the fan side either crossing the radiator diagonally or rods running parallel to the top tank. If it has the diagonal cross straps, cut them off as close to the sides as possible and remove them. Leave parallel rods if equipped on radiator.

21. Install fan spacer (4) on water pump. Tighten with punch.
22. Remove OEM fan from fan clutch. Install DewEze supplied fan (26) on fan clutch.

NOTE: Failure to install DewEze fan may result in the fan contacting the radiator.

23. Install fan shroud. Install fan clutch onto fan spacer. Tighten with punch.
24. Check all battery cables, wires, and air conditioner lines to make sure they will not interfere with pulleys and belts.
25. Run engine, checking for alignment, clearance, vibration or other installation problems. Correct as needed.