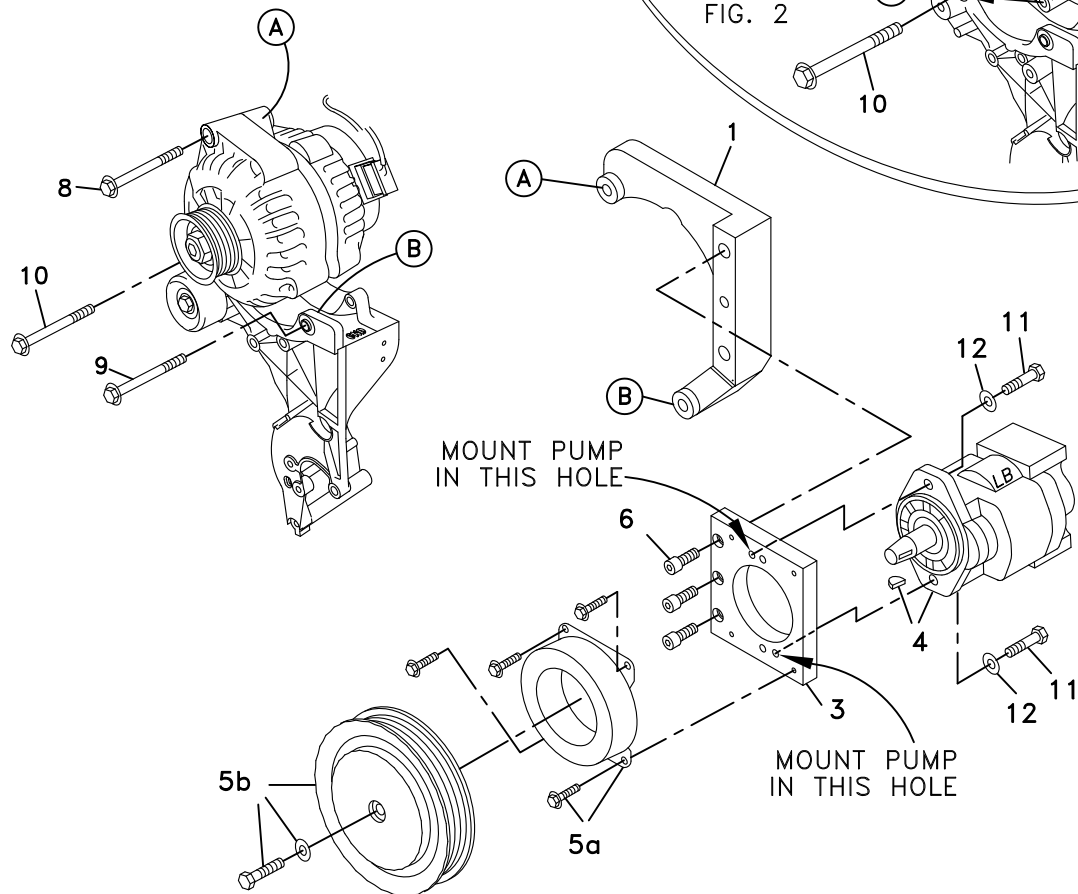


711356	Bracket Bolt Pkg. (Inc. items 6, 8)	Kit No.	700505
		Make	ISUZU/GMC
		Engine	6.0L
		Fuel	Gas
		Year	2001-
		Options	Vacuum Pump
		Revised	NC 10-21-09

ITEM	PART #	DESCRIPTION		
1.	711399	Engine bracket	10.	OEM Bolt
2.	-----	-----	11.	110425 3/8-16 x 1 1/4 Bolt
3.	710936	Pump plate	12.	110676 3/8 Flat Washer
4.	*	Pump, rear port	13.	-----
5.	742016	Clutch	14.	-----
6.	110465	3/8-16 x 1 1/4 Socket head bolt	15.	-----
7.	-----	-----	16.	-----
8.	110217	M10 x 70 x 1.5 Bolt	17.	-----
9.	OEM	Bolt	18.	740423 Belt, Micro-V K061331
			19.	** Insulation, pressure hose
			20.	** Insulation, suction hose

* See master list for pump part no.

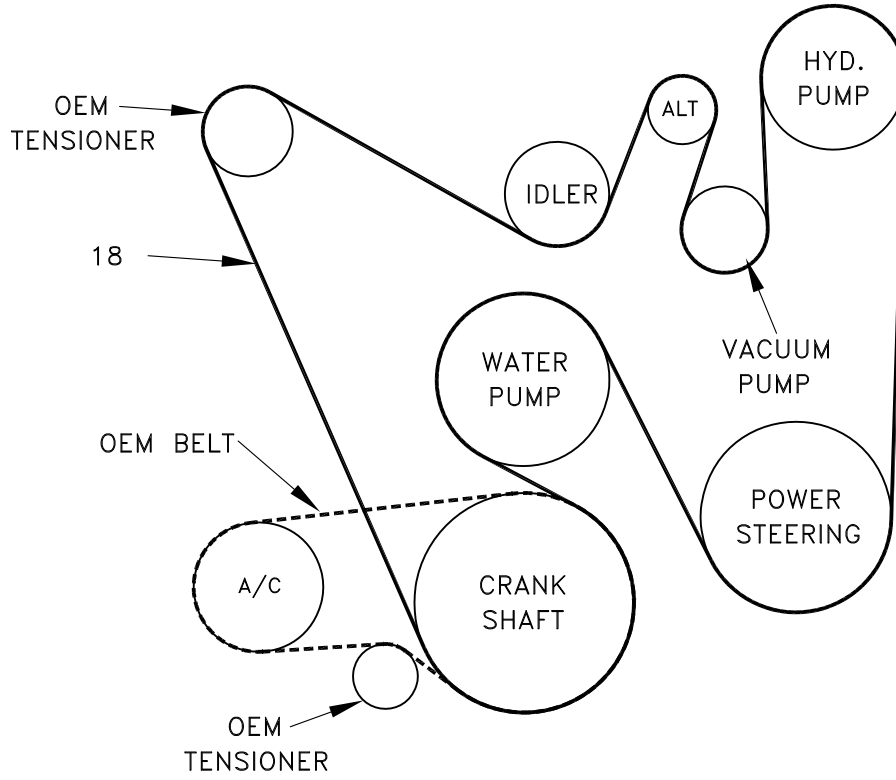
FIG. 1



(A),(B),(C)... Denotes bolt holes in engine to locate corresponding holes in Pump Brkt.

FIG. 3

BELT DIAGRAM



DewEze

Clutch Pump Kit
#700505
Chevy 6.0L
With 130A alt.
and A/C
'A' mount
2001-

INSTALLATION INSTRUCTIONS

1. The installation of this kit requires trained decision-making concerning clearances, tying components together, rerouting, or relocating OEM components, etc. It is impossible to describe all of the clearance and vibration points, etc. in the installation instructions. Therefore, the technician must exercise professional judgment to achieve the best quality installation.
2. Disconnect the battery.
3. Unbolt the alternator. Rotate it clockwise so the alternator lug that was on the driver's side of the mounting bracket is now on the passenger side of the mounting bracket. See Fig. 2. Thread the OEM bolt (10) that was originally in that hole back into the same location to mount the alternator. Do not tighten it yet.
4. Some engines have a coil pack bracket that interferes with the positive alternator post. Remove a portion of this bracket if there is contact at this location, while maintaining structural integrity of bracket. See photograph to right.
5. Attach the pump plate (3) to the engine bracket (1) with three 3/8 x 1 1/4 socket head bolts (6).
6. Bolt pump (4) onto pump plate (3) with two 3/8 x 1 1/4 bolts (11) and two 3/8 flat washers (12). Torque to 20 ft-lb. Attach coil (5a) with four 1/4 x 1/2 flange bolts supplied with clutch. Torque these to 6 ft-lb. Attach clutch pulley (5b) to pump shaft with 5/16NF x 1 1/4 bolt and heavy washer supplied with clutch. Torque to 14 ft-lb.
7. Insert the lower bracket between the lugs on the alternator bracket at location B with the OEM bolt (9) taken from this location. Insert the M10 x 70 bolt (8) into the top hole in the alternator and thread into the DewEze bracket at location A. Tighten these bolts and the OEM bolt at location C.
8. Slip the small hose insulation sheath (19) over the pressure hose. Slip the large hose insulation sheath (20) over the suction hose. Place the sheaths where the hoses run close to the exhaust to protect the hoses from the heat. Fasten the sheaths to the hoses with the nylon cable ties. Route the hoses back to the firewall and down running along side the frame.
9. Install the belt (18).
10. Connect the battery.
11. Run the engine and check for any clearance or alignment problems. Adjust as needed.

