

Chevrolet/GMC, 6.6L : D, 4500, 5500, 2010+, 5-7 A Pump, Side Port

Bracket Assy.	None
Bolt Packages:	
Bracket	711580 (Inc. items 3, 11, 13)
Pulley	None
Idler	711581 (Inc. items 4, 10, 15)
Tensioner	None

Make	Chevy 4500, 5500
Engine	6.6L
Fuel	Diesel
Year	2010-
Equipment	A/C
Revised	NC 7-23-09

Item	Part No.	Description
1.	711579	Engine bracket
2.	711578	Gusset
3.	110567	M10 x 80 x 1.5 bolt
4.	711009	Idler bushing
5.	710936	Pump plate
6.	740242	Idler pulley
7.	*	Pump / Side port
8.	742016	Clutch
9.	-----	-----
10.	110210	M10 x 50 x 1.5 Bolt
11.	110437	3/8-16 x 3/4 Wiz flange bolt
12.	OEM	A/C compressor bolt
13.	110465	3/8-16 x 1 1/4 Socket head bolt
14.	110425	3/8-16 x 1 1/4 Bolt
15.	110676	3/8 Flat washer
16.	740359	Belt/Poly Cog 20-1605 (142")

* 5-7 GPM pump only. See master list for pump number.

FIG. 1

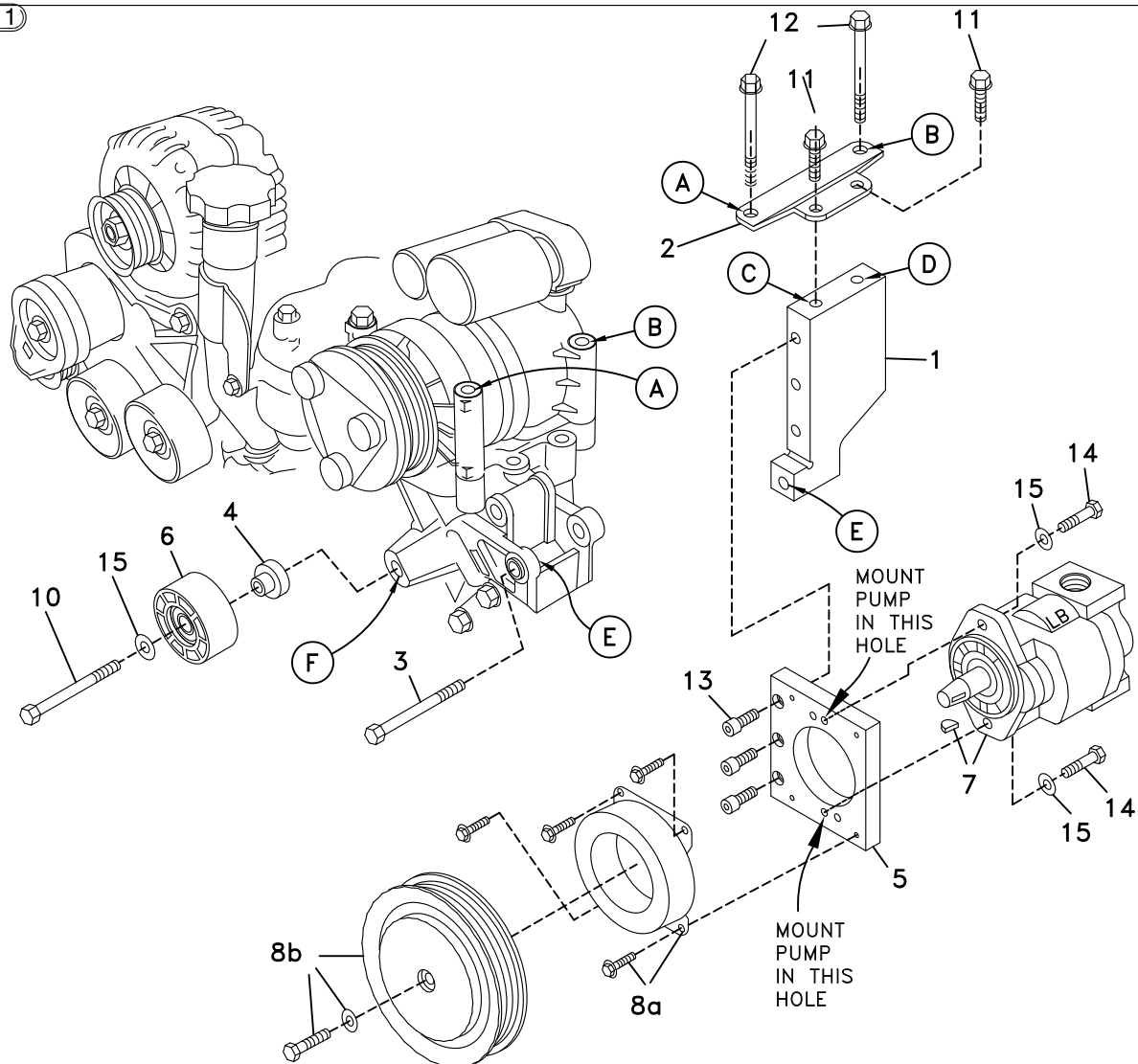
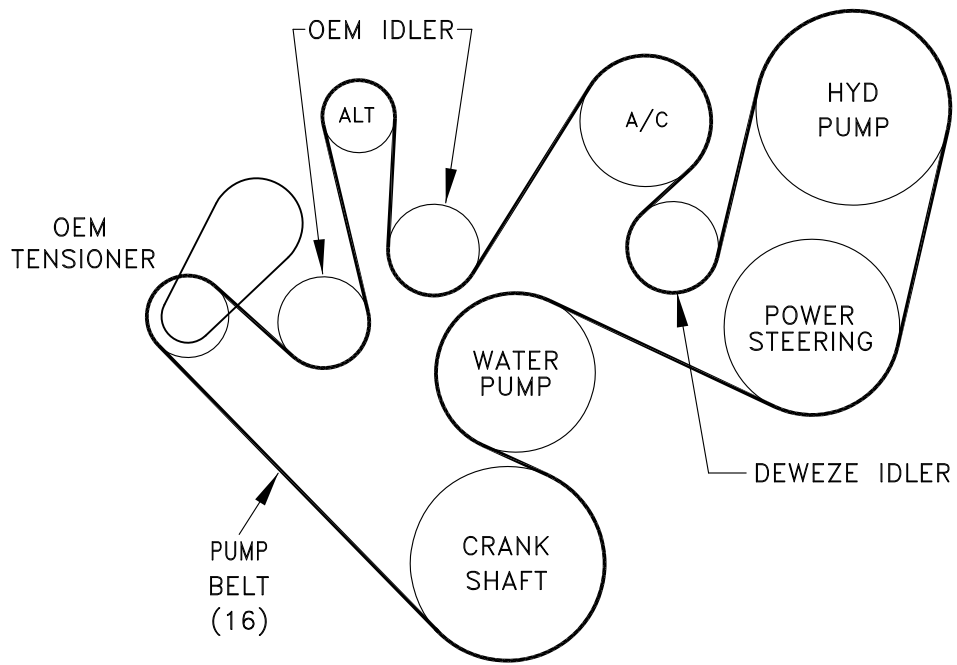


FIG. 2

BELT DIAGRAM



DewEze

Clutch Pump Kit

#700501
Chevy 6.6L
with A/C
'A' mount
2010+

INSTALLATION INSTRUCTIONS

1. Disconnect the battery.
2. Remove the OEM belt.
3. Bolt the pump plate (5) to the engine bracket (1) with three 3/8 x 1 1/4 socket head bolts (13). Torque to 20 ft-lb.
4. Thread the adapters into the pump. Attach the pump to the pump plate with two 3/8 x 1 1/4 bolts (14) and two 3/8 flat washers (15). Torque to 20 ft-lb. Use the mounting holes as shown so the pump is oriented vertically.
5. Place the pump bracket assembly in the A/C bracket at Location E. Thread the M10 x 80 bolt (3) through the bracket to just hold it in place.
6. Remove the two OEM bolts (12) from the A/C compressor at Locations A and B. Attach the gusset (2) to the A/C compressor with the two OEM bolts back in their original locations at A and B. Attach the gusset to the engine bracket with the two 3/8 x 3/4 flange bolts (11) at Locations C and D. Tighten all bracket bolts.
7. Attach coil (8a) with four 1/4 x 1/2 flange bolts supplied with clutch. Torque these to 6 ft-lb. Attach clutch pulley (8b) to pump shaft with 5/16NF x 1 1/4 bolt and heavy washer supplied with clutch. Torque to 14 ft-lb.
8. Push the idler bushing (4) into the back (the side without the snap ring) of the idler pulley (6). Insert the M10 x 50 bolt (10) through a 3/8 flat washer (15), through the idler pulley and bushing and into the hole on the air conditioner bracket at location F. Thread the M10 lock nut (12) onto bolt (10). Torque to 25 ft-lb.
9. Install the belt (16) as shown in the belt diagram (Fig. 2).
10. Connect the battery.
11. Run the engine and check for any clearance or alignment problems. Adjust as needed.