

FIG. 2

BRACKET, PULLEY INSTALL

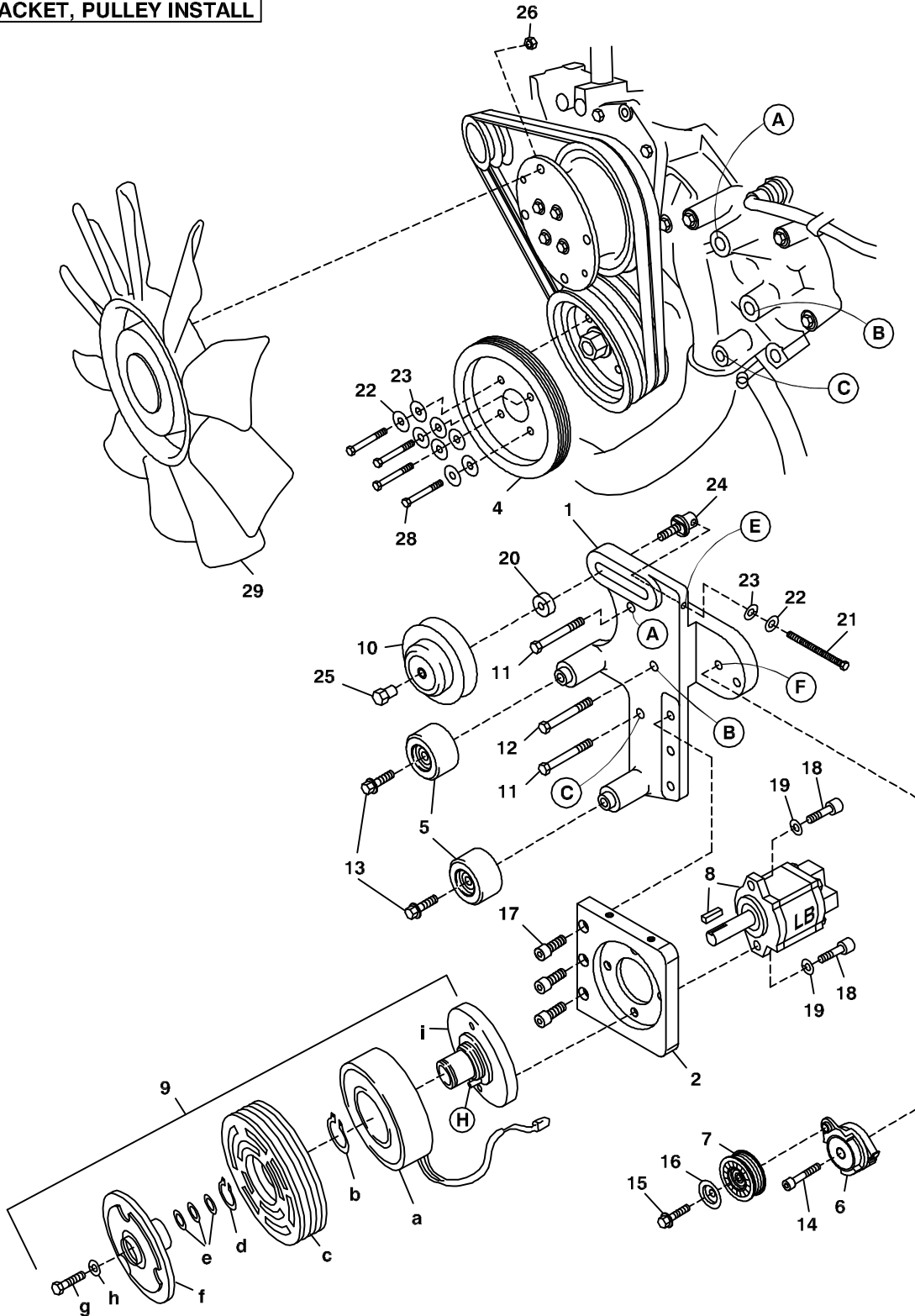


FIG. 3

MODIFY FAN SHROUD

CUT FAN SHROUD AS SHOWN - BOTH OUTSIDE AND INSIDE WALLS

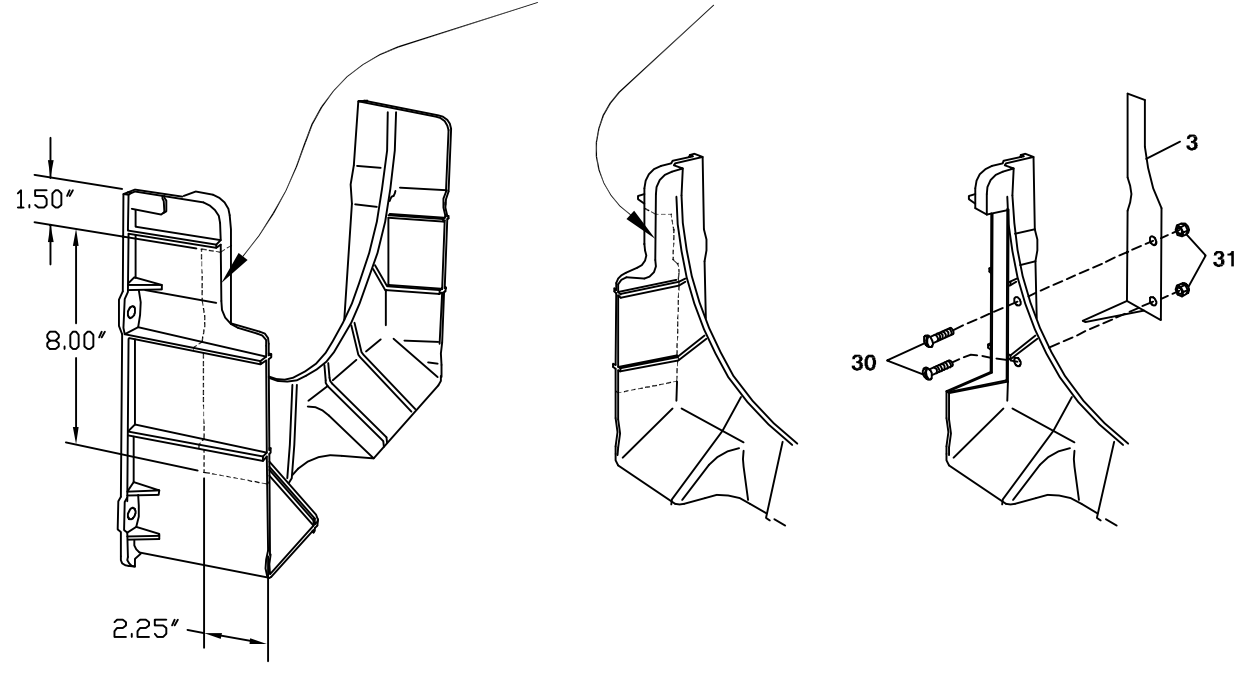
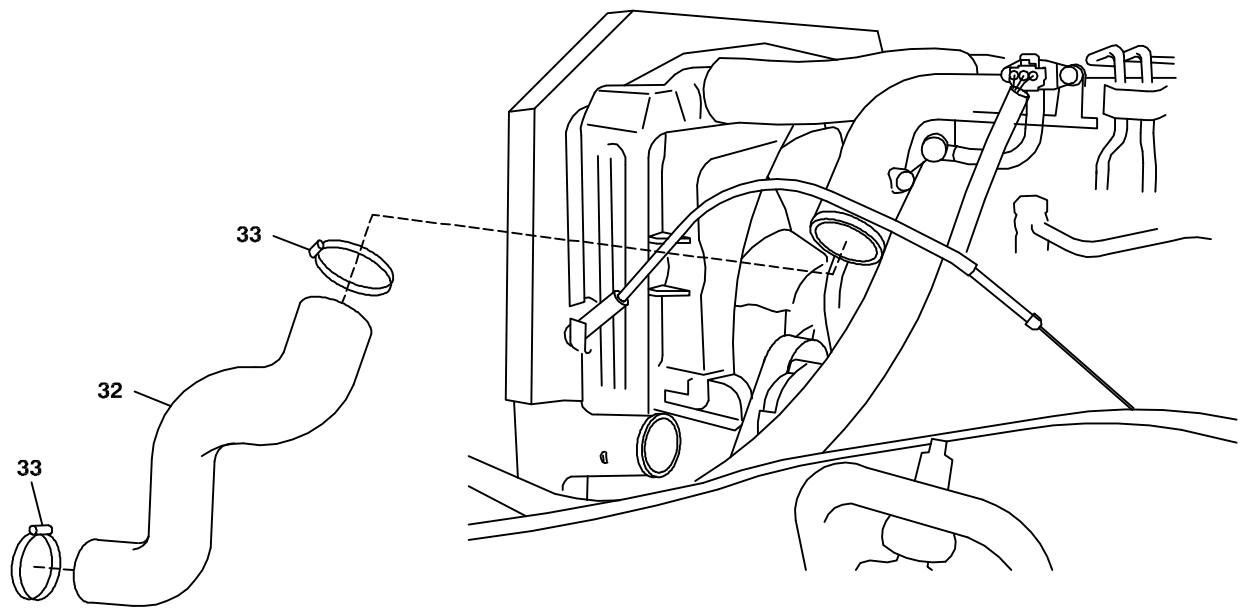


FIG. 4

INSTALL INTERCOOLER HOSE



DewEze

Clutch Pump Kit
700499
Mitsubishi
3.9 L
'AA' mount
2001 +

INSTALLATION INSTRUCTIONS

1. Disconnect the battery.
2. Drain enough coolant from the radiator to get the level below the top hose. Remove the hose.
3. Remove the OEM intercooler hose.
4. Remove the OEM top fan shroud. Unbolt the fan by loosening four nuts (26). Lift out the fan.
5. Remove the lower shroud from the radiator. Cut out the section from the shroud as shown in Fig. 3. Remove both the outer and inner walls. Hold the filler plate (3) inside the cutout in the front of the shroud. Mark the two hole locations in the plate onto the shroud. Drill holes with a 3/16" drill. Attach the plate to the shroud with the two 10-24 x 1/2 screws (30) and two 10-24 lock nuts (31). Mount the lower shroud back on the radiator.
6. Attach the crankshaft pulley (4) to the crankshaft damper with four M8 x 60 bolts (28), four 5/16 lock washers (22) and four 5/16 flat washers (23).
7. Loosen the air conditioner tensioner adjusting bolt (21). Remove the air conditioner belt. Remove the OEM tensioner bracket from the engine. Disassemble the individual pieces from the tensioner.
8. Bolt the engine bracket onto the engine at locations A and C with the M10 x 30 bolt (11). Thread the M10 x 45 (12) bolt into location B.
9. Reassemble the A/C tensioner parts in the DewEze engine bracket (1): Hold the idler hub (24) in the cavity in the rear, lining up the flat spots on the shoulder so they fit in the slot. Place the lock washer (22) and the flat washer (23) on the long adjusting bolt (21), insert through the hole in the edge of the bracket at location E, and thread into the idler hub. Place the spacer (20) on the front of the hub. Insert the nut (25) into the center of the idler (10) and thread onto the hub and tighten. Replace the OEM air conditioner belt and adjust.
10. Mount the two idlers (5) onto the bosses on the engine bracket using the two 7/16 x 1 3/16 flange head bolts (13).
11. Hold pump (8) onto back of mounting plate (2) and clutch hub (9i) onto front of mounting plate, making sure clutch wire and anti-rotation pin (H) on front of hub is on the top. Use the mounting holes as shown so the pump is oriented vertically. Place two 3/8 x 1 1/4 socket head bolts (18) with 3/8 high collar lock washers (19) through pump, through mounting plate and thread into hub.
12. Slide coil (9a) over hub, aligning hole in the back plate of coil with the anti-rotation pin (H) in the hub. The wires from the coil should be on the same side as the pin (H). Install large snap ring (9b) to hold coil in place.
NOTE: THE BEVEL ON BOTH SNAP RINGS MUST FACE AWAY FROM THE PUMP. REFER TO INSTRUCTION SHEET FOR THE CLUTCH FOR CORRECT INSTALLATION OF SNAP RINGS.
13. Slide clutch pulley (9c) onto hub. Install small snap ring (9d) to hold pulley in place.

14. Place the key (8) onto the pump shaft. Slide the hub/armature (9f) onto the pump shaft aligning the keyways.
NOTE: SET THE AIR GAP BETWEEN THE HUB/ARMATURE AND THE PULLEY USING SHIMS (9e) ACCORDING TO INSTRUCTION SHEET FOR CLUTCH.
15. Thread bolt (9g) and lock washer (9h) into pump shaft. Torque to value in clutch instruction sheet.
16. Attach the idler pulley (7) onto the tensioner (6) with the 7/16 x 1 3/8 left hand flange head bolt (15) with the large cupped washer (16). Install the tensioner on the engine bracket at location F with the 3/8 x 2 1/2 socket head bolt (14).
17. Install the pump drive belt (34).
18. Replace the fan using the OEM nuts (26). Replace the upper shroud. Put the coolant back in the radiator. Replace the OEM radiator hose. Install the new intercooler hose (32) using the OEM hose clamps (33).
19. Connect the battery.
20. Run the engine and check for any clearance or alignment problems. Adjust as needed.