

**UD 2000 6-Cyl. 469 c.i.: D, 2008+, A Pump, Rear Port**

**BOLT PACKAGES:**

BRACKET	711953 (Inc. item 13 - 21)
IDLER PULLEY	711954 (Inc. item 6, 22, 23)
PULLEY	None
TENSIONER	None
FAN SPACER	None

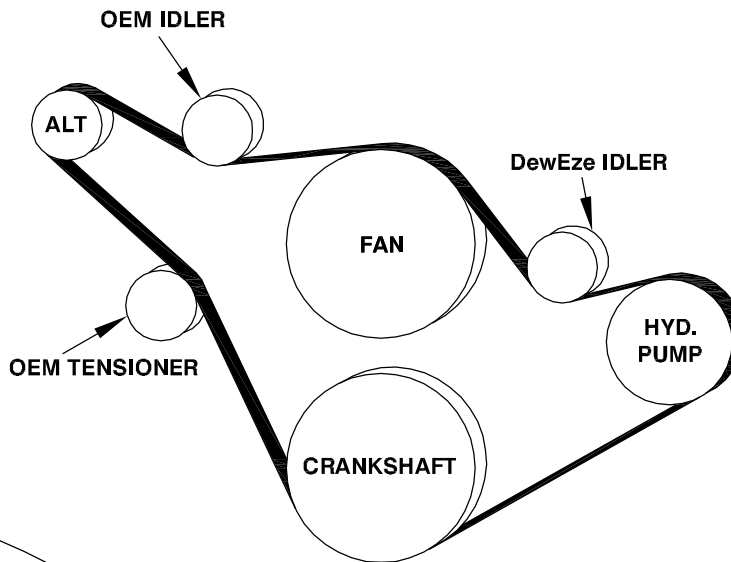
2-9-09 ISSUE DATE NC 2-9-09 REVISION DATE

**Item Part No. Description**

1.	711948	Engine bracket	17.	110395	3/8-16 x 1 Socket head bolt
2.	711949	Pump plate support	18.	110465	3/8-16 x 1 1/4 Socket head bolt
3.	711950	Pump mount support brace	19.	110260	M8 x 1.25 x 25 Bolt
4.	711951	Pump plate	20.	110665	5/16 Flat washer
5.	711952	Fan shroud connector bracket	21.	110141	M8 x 1.25 Flange nut
6.	711785	Idler bushing	22.	110705	M10 x 1.5 x 55 Bolt
7.	702093	Radiator hose, lower	23.	110676	3/8 Flat washer
8.	702090	Water duct, short	24.	110425	3/8-16 x 1 1/4 Bolt
9.	OEM	Intercooler hose	25.	OEM	Bolt
10.	*	Pump	26.	511003	Hose clamp
11.	742009	Clutch	27.	702091	O-ring, thermostat
12.	740261	Idler	28.	711955	Heater hose
13.	110100	M10 x 1.5 x 52 Stud bolt	29.	520098	Hose clamp
14.	110869	M10 x 1.5 x 72 Stud bolt	30.	720246	Hose splice
15.	110265	M10 x 1.5 Flange nut	31.	742072	Belt, Micro-V K080653
16.	110473	3/8-16 x 1 Hex Bolt			

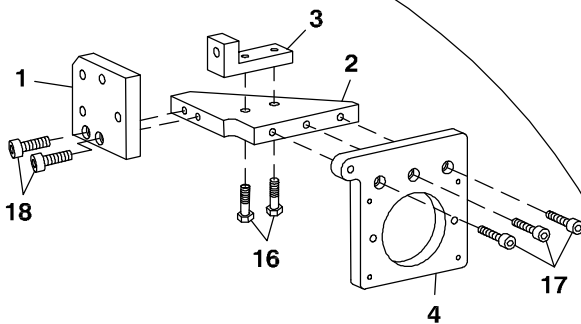
**FIG. 1**

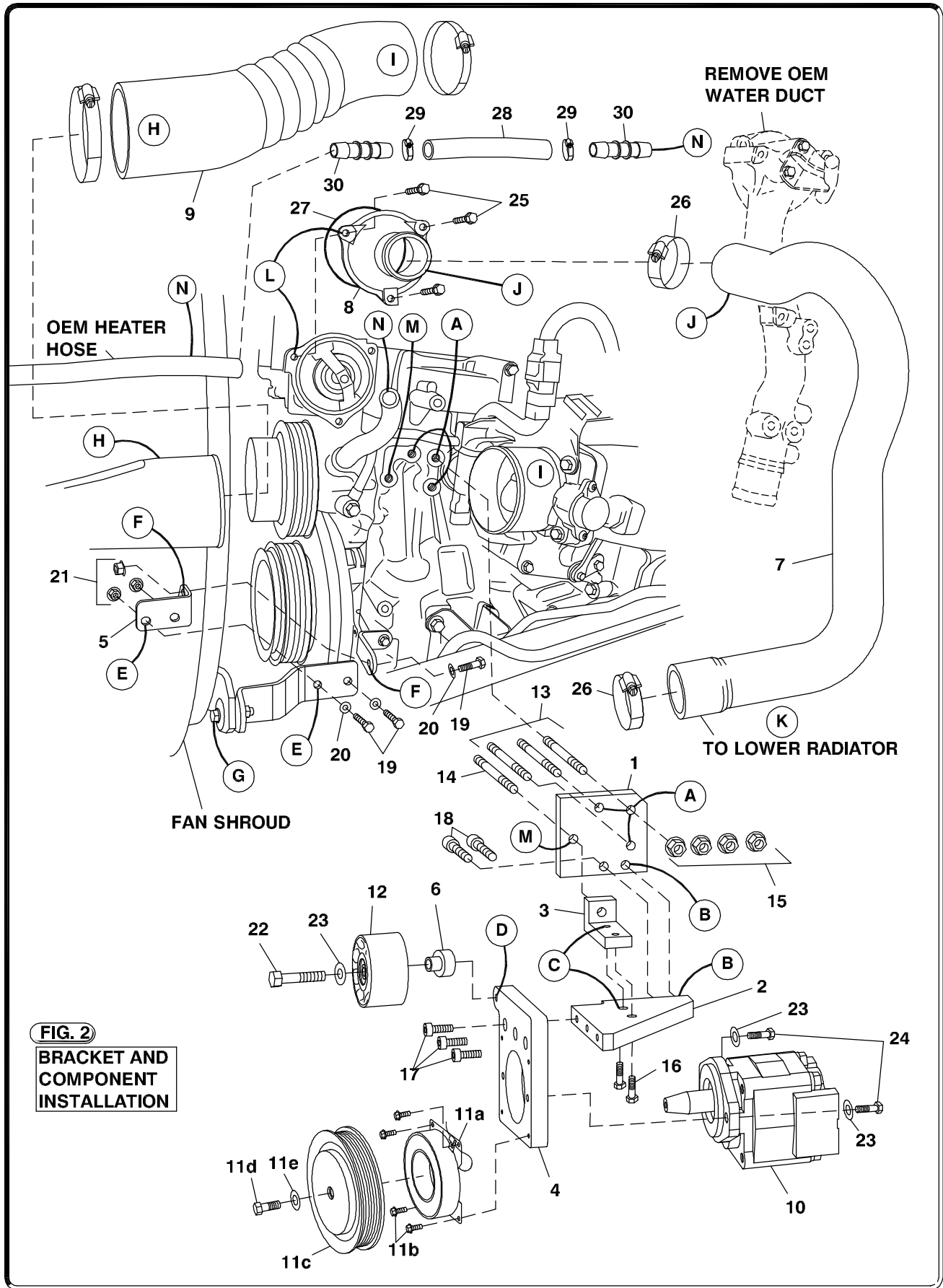
**BELT DIAGRAM**



**FIG. 3**

**BRACKET ASSEMBLY**





**FIG. 2**  
**BRACKET AND**  
**COMPONENT**  
**INSTALLATION**

# DewEZE Clutch Pump Kit 700495

UD/Hino 6 cyl., 469 c.i., 2008+,

## INSTALLATION INSTRUCTIONS

1. The installation of this kit requires trained decision-making concerning clearances, tying components together, rerouting, or relocating OEM components, etc. It is impossible to describe all of the clearance and vibration points, etc. in the installation instructions. Therefore, the technician must exercise professional judgment to achieve the best quality installation.
2. Disconnect the battery.
3. Remove the intercooler hose.
4. Drain the coolant from the radiator. Disconnect heater hoses from OEM water duct tube. Remove OEM water duct tube. Install new short water duct (8) with O-Ring (27) using OEM bolts (25). Insert hose splice (30) into each end of the 5/8 x 5" heater hose (28) using two hose clamps (29). Connect the two OEM heater hoses (Locations N) together with this short hose and splices using the OEM hose clamps.
5. Remove the OEM belt.
6. Loosen the OEM fan shroud bolt at location G so connector bracket will align. Attach the fan shroud connector bracket (5) to the OEM shroud Brackets using three M8 x 25 Bolts (19), three 5/16 flat washers (20) and three M8 Nuts (21).
7. Thread three M10 x 50 stud bolts (13) into engine at location A. Thread the M10 x70 stud bolt (14) into the engine at location M.
8. Assemble the bracket: Bolt the pump plate support (2) to the engine bracket (1) with two 3/8 x 1 1/4 socket head bolts (18). Attach the brace (3) to the support (2) with two 3/8 x 1 bolts (16). Place the assembled bracket over the stud bolts, attaching it with four M10 flange nuts (15).
9. Run the hoses into the engine compartment. Mount the hose adapters to the pump. Mount the pump (10) to the back of the pump plate (4) with two 3/8 x 1 1/4 bolts (24) and two 3/8 flat washers (23). Attach the hoses to the pump. Mount the pump plate (4) with pump to the support (2) on the assembled bracket with three 3/8 x 1 socket head bolts (17).
10. Place the M10 x55 bolt (22) through the 3/8 flat washer (23), the idler (12), the idler bushing (6), and into the pump plate at location D.
11. Mount the clutch coil (9a) to the pump bracket with four 1/4 x 1/2 flange bolts (9b). Mount the clutch pulley (9c) to the pump shaft with the 5/16 x 1 1/4 bolt (9d) and heavy flat washer (9e) making sure the key is in place on the shaft.
12. Install the belt (31) as shown in the diagram (Fig. 1).
13. Replace intercooler hose (9) with OEM clamps.
14. Using hose clamps (26) Install new radiator hose (7). Replace coolant.
15. Reconnect the battery.
16. Run the engine and check for any clearance or alignment problems. Adjust as needed.