

Bolt Packages:

Bracket	711933 (Inc. items 5, 6)
Pulley	None
Idler, pump brkt.	711459 (Inc. items 8, 10)
Idler, a/c brkt.	None
Tensioner	None

Make	Chevrolet 4500, 5500	
Engine	8.1L	
Fuel	Gas	
Year	2003+	
Equipment	no A/C	
Revised	NC	11-13-08

Item	Part No.	Description
1.	711910	Pump bracket
2.	-----	-----
3.	-----	-----
4.	740261	Idler pulley 3" Dia. x 1.50" wide
5.	110526	M10 x 40 x 1.5 Bolt
6.	110274	M10 x 140 x 1.5 Bolt
7.	-----	-----
8.	110488	M10 x 45 x 1.5 Bolt
9.	110425	3/8-16 x 1 1/4 Bolt
10.	110676	3/8 Flat washer
11.	*	Pump
12.	742016	Clutch
13.	-----	-----
14.	-----	-----
15.	740415	Belt, Micro-V K061098

FIG. 1
BELT DIAGRAM

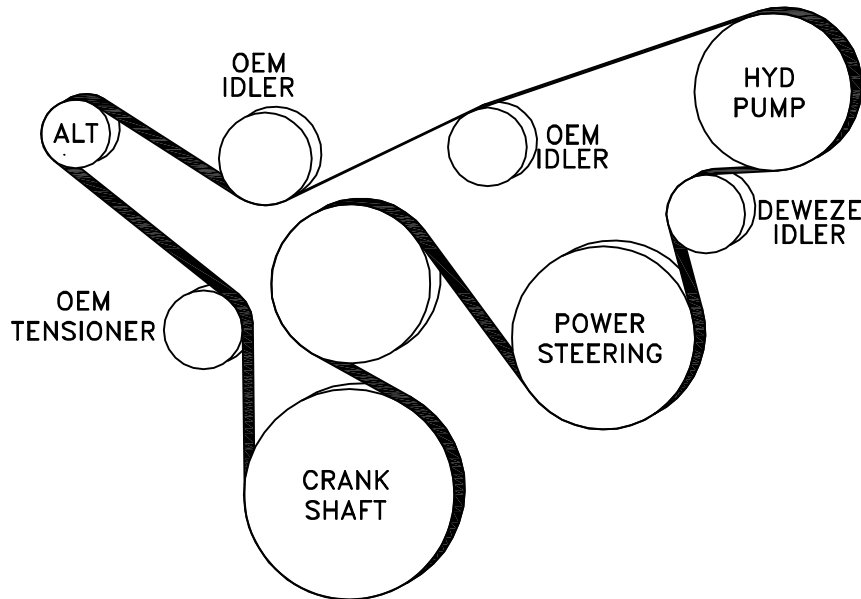
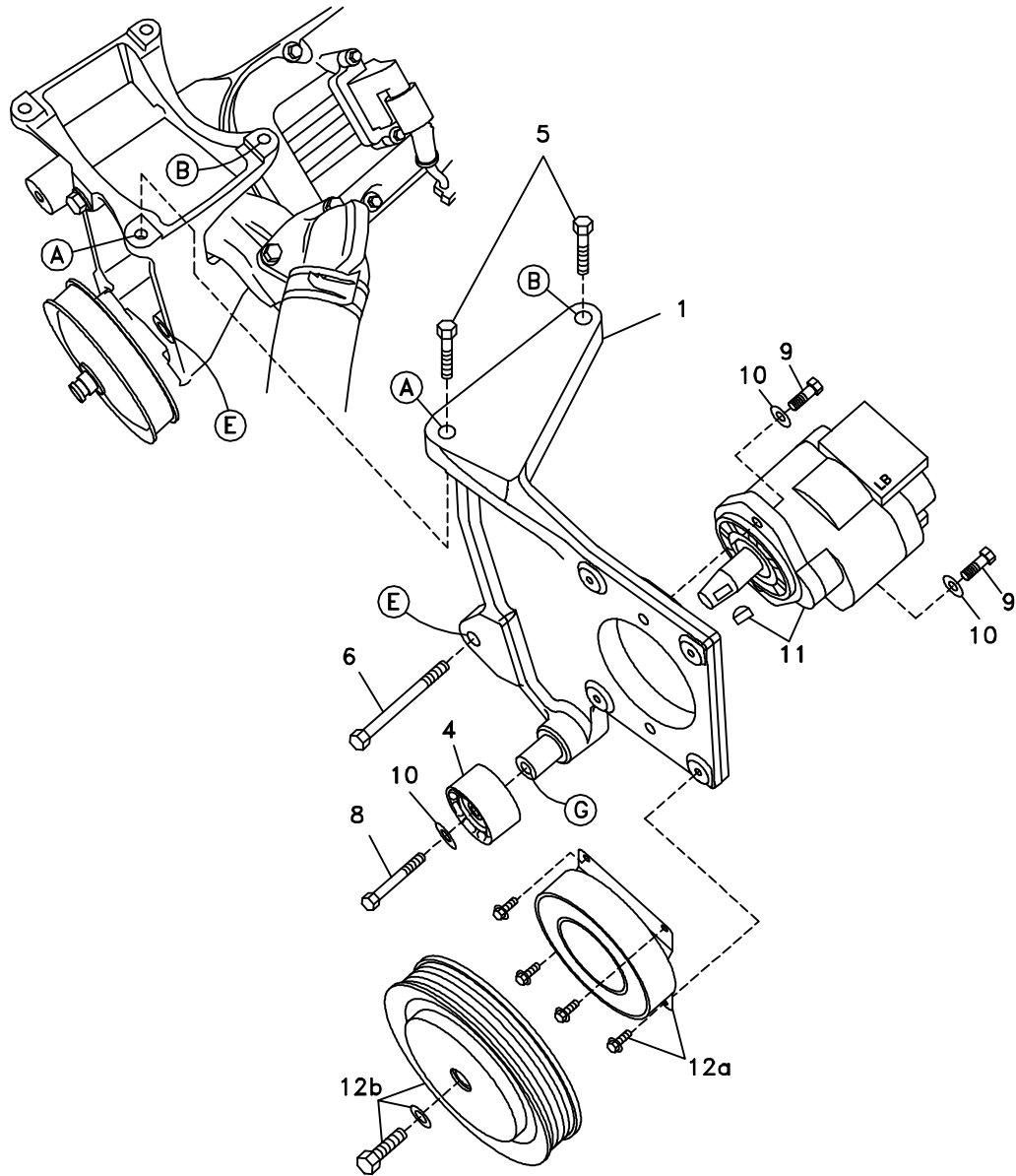


FIG. 2



DewEze

Clutch Pump Kit

Clutch Pump Kit
700493
Chevy 8.1L
No A/C
4500, 5500
2003+

INSTALLATION INSTRUCTIONS

1. Disconnect the battery.
2. Remove the air filter canister.
3. Remove OEM belt.
4. Remove the OEM bolt from the lower air conditioner bracket at Location E.
5. Place the top plate of the engine bracket (1) at Locations A and B. Thread two M10 x 40 bolts (5) here. Insert the M10 x 140 bolt (6) into the hole at Location E. Tighten all bolts.
6. Mount the pump (11) to the back of the pump plate (1) with two 3/8 x 1 1/4 bolts (9) and two 3/8 flat washers (10). Attach the clutch coil (12a) to the pump plate with four 1/4 x 1/2 flange bolts. Attach the clutch pulley (12b) with the 5/16 x 1 1/4 bolt with heavy flat washer.
7. Place a 3/8 flat washer (10) on one of the M10 x 45 bolt (8) and insert it through the idler pulley (4) threading it into the boss at Location G.
8. Install the belt (15) as shown in the diagram (Fig. 1).
9. Run the engine and check for any clearance or alignment problems. Adjust as needed.