

Chevy/GMC, 6.0L:G, 2008+, Van 2500-3500, A SF Pump, Side Port

Bolt Packages:

Bracket	711356 (Inc. items 6, 8)
Idler pulley	711368 (Inc. items 7, 12, 16)
Idler Brkt.	711370 (Inc. items 13, 14)
Tensioner	None
Crank Pulley	None

Bracket Assy.	None	(Inc. items)
Issue Date	11-12-07	Revision Date NC 11-12-07

Item Part No. Description

1.	711399	Engine bracket	10.	OEM	Bolt
2.	-----	-----	11.	110440	3/8-16 x 1 Wiz flange Bolt
3.	711906	Pump plate	12.	110676	3/8 Flat washer
4.	*	Pump, side port	13.	110487	M10 x 120 x 1.5 Bolt
5.	742016	Clutch	14.	110181	M10 x 130 x 1.5 Bolt
6.	110465	3/8-16 x 1 1/4 Socket head bolt	15.	711365	Idler bracket
7.	110526	M10 x 40 x 1.5 Bolt	16.	711366	Idler bushing
8.	110217	M10 x 70 x 1.5 Bolt	17.	740294	Idler
9.	OEM	Bolt	18.	740336	Belt/Dayco 5061223

FIG. 1
BELT DIAGRAM

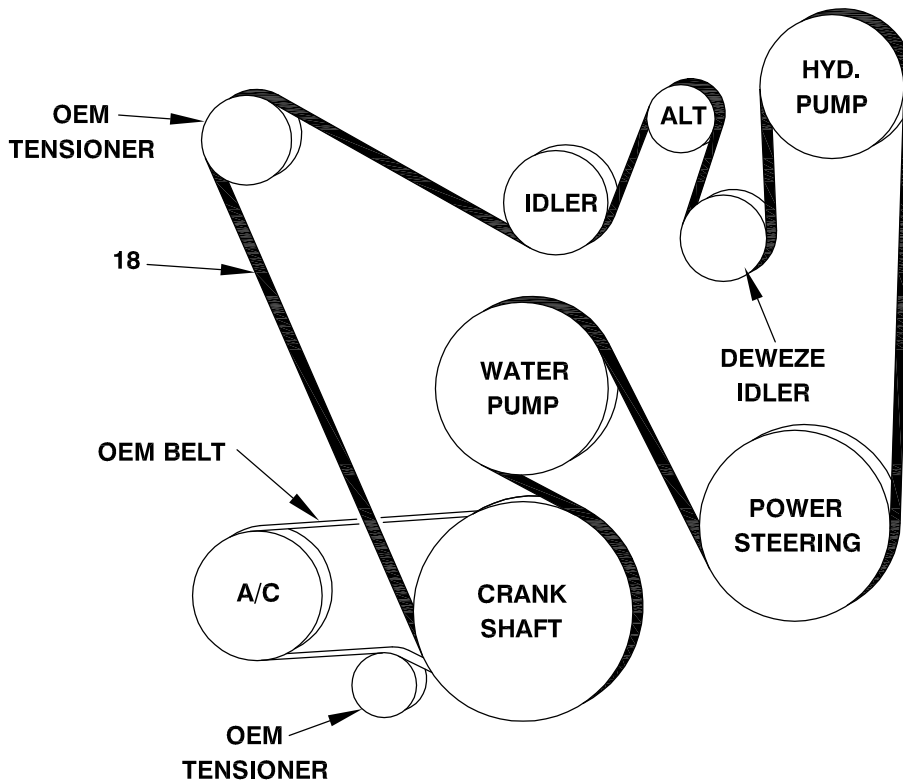
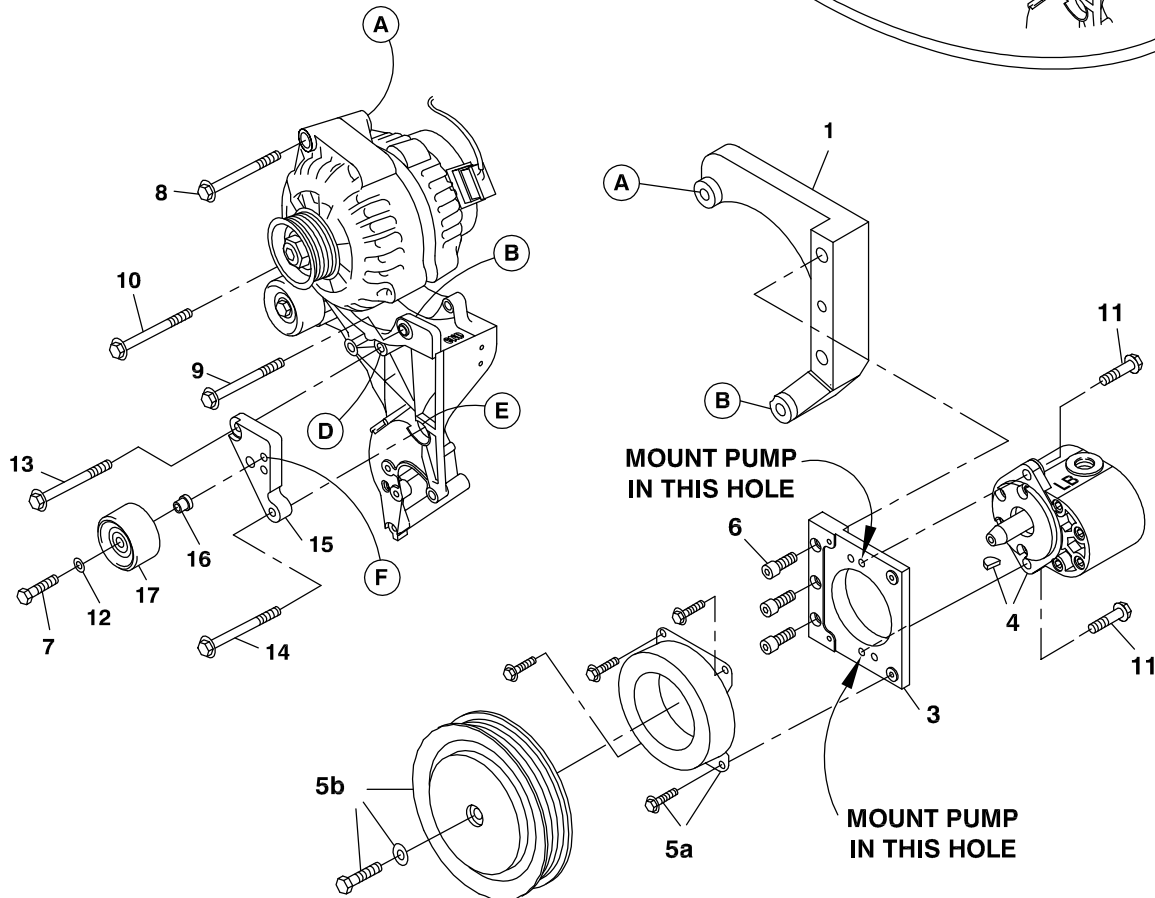


FIG. 2

ROTATE ALTERNATOR
CLOCKWISE SO LUG
ON DRIVER'S SIDE
NOW MOUNTS ON
PASSENGER SIDE OF
MOUNTING BRACKET

FIG. 2

**OEM
CONFIG.**



DewEze Clutch Pump Kit 700482

Chevy/GMC 6.0L, 2008+, Van 2500-3500A,
A Short shaft, Side Port Pump

INSTALLATION INSTRUCTIONS

1. The installation of this kit requires trained decision-making concerning clearances, tying components together, rerouting, or relocating OEM components, etc. It is impossible to describe all of the clearance and vibration points, etc. in the installation instructions. Therefore, the technician must exercise professional judgment to achieve the best quality installation.
2. Disconnect the battery.
3. Unbolt the alternator. Rotate it clockwise so the alternator lug that was on the driver's side of the mounting bracket is now on the passenger side of the mounting bracket. See Fig. 2. Thread the OEM bolt (10) that was originally in that hole back into the same location to mount the alternator. Do not tighten it yet.
4. Attach the pump plate (3) to the engine bracket (1) with three 3/8 x 1 1/4 socket head bolts (6).
5. Bolt pump (4) onto pump plate (3) with two 3/8 x 1 1/4 bolts (11) and two 3/8 flat washers (12). Torque to 20 ft-lb. Attach coil (5a) with four 1/4 x 1/2 flange bolts supplied with clutch. Torque these to 6 ft-lb. Attach clutch pulley (5b) to pump shaft with 5/16NF x 1 1/4 bolt and heavy washer supplied with clutch. Torque to 14 ft-lb.
6. Insert the lower bracket between the lugs on the alternator bracket at location B with the OEM bolt (9) taken from this location. Insert the M10 x 70 bolt (8) into the top hole in the alternator and thread into the DewEze bracket at location A. Tighten these bolts and the OEM bolt at location C.
7. Remove OEM bolts at locations D and E and discard. Insert the idler bushing (16) into the back of the idler pulley (17). Insert the M10 x 40 bolt (7) through the 3/8 flat washer (12), through the front of the idler pulley with bushing and into the top threaded hole at location F in the idler bracket (15). Attach the idler bracket to the alternator bracket with the M10 x 120 bolt (13) at location D and the M10 x 130 bolt (14) at location E.
8. Install the belt (18).
9. Connect the battery.
10. Run the engine and check for any clearance or alignment problems. Adjust as needed.