

**Ford, 5.4L:G, 2008+, w/Spider Kit, A Pump, 12, 17 GPM, Rear Port**

**Bolt Packages:**

Bracket	711894 (Inc. Items 10-13, 20)
Idler pulley	711895 (Inc. Items 9, 10, 14)
Pulley	None
Tensioner	None

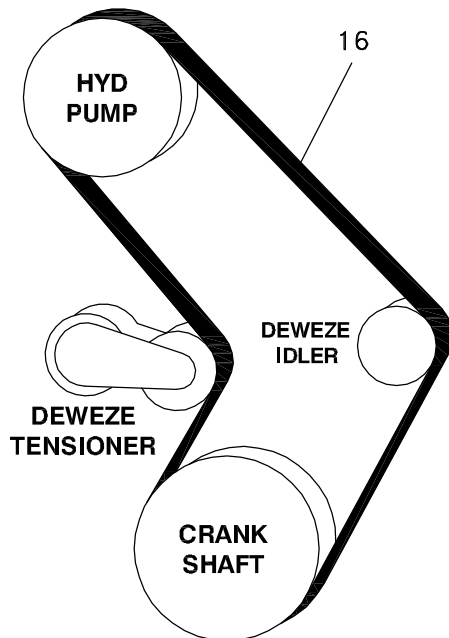
Issue Date	9-12-07	Revision Date	K	12-6-11
------------	---------	---------------	---	---------

**Item Part No. Description**

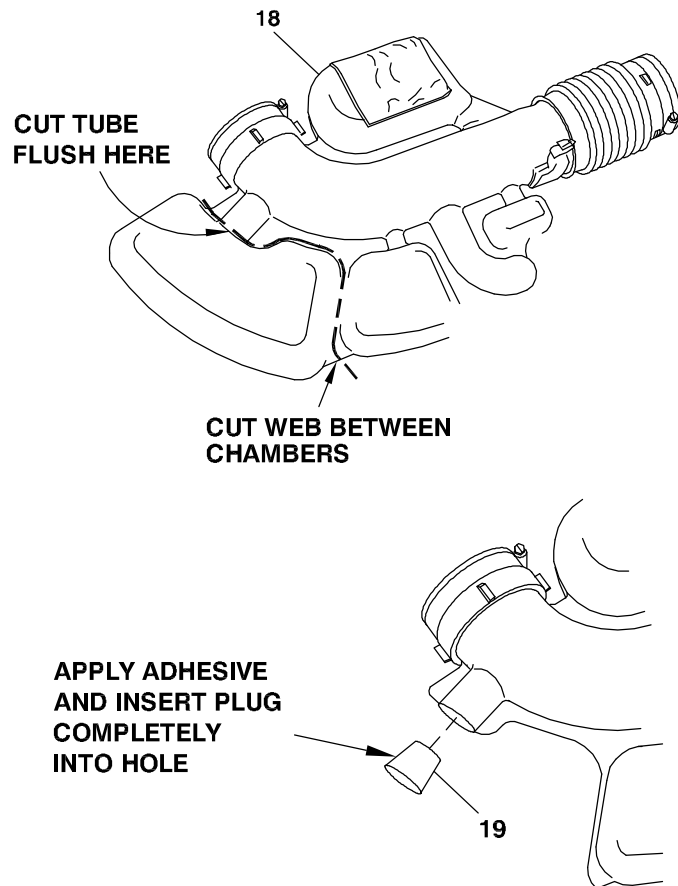
1.	711887	Engine bracket	13.	110558	M8 1.25 x 50 Bolt
2.	711216	Pump footmount	14.	110567	M10 x 1.5 x 80 Bolt
3.	711897	Fan spacer	15.	OEM	Wire
4.	743004	Tensioner	16.	742058	Belt, Micro-V K080690
5.	740143	Idler pulley, 8-groove 3.00"	17.	742068	Crank damper
6.	740436	Spider kit	18.	OEM	Airbox
7.	*	Pump, A rear port	19.	110915	Plug, tapered silicone, 1 7/16"
8.	742009	Clutch	20.	110827	M12 x 1.5 x 70 Bolt
9.	110705	M10 x 1.5 X 55 Bolt	21.	711944	Plate, alternator bridge
10.	110676	3/8 Flat washer	22.	OEM	Bolt
11.	110425	3/8-16 x 1 1/4 Bolt	23.	OEM	Bolt
12.	110292	M8 x 1.25 x 120 Bolt	24.	110761	M8 x 1.25 x 110 Bolt

\* See pump list for sizes and part numbers.

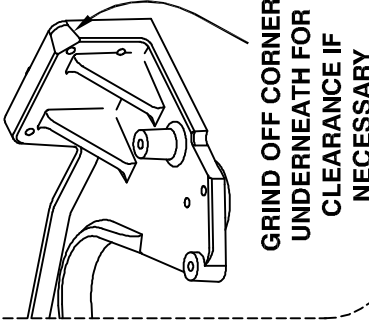
**FIG. 1**  
**BELT DIAGRAM**



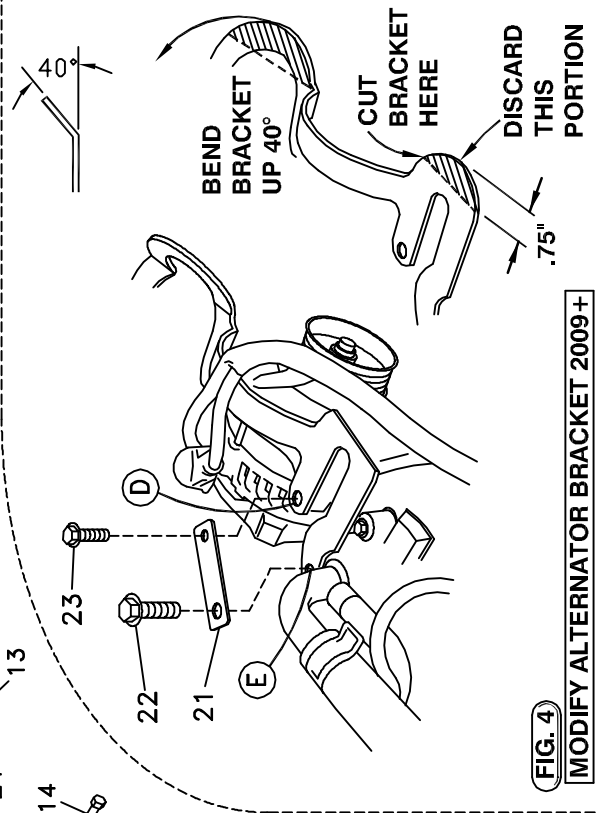
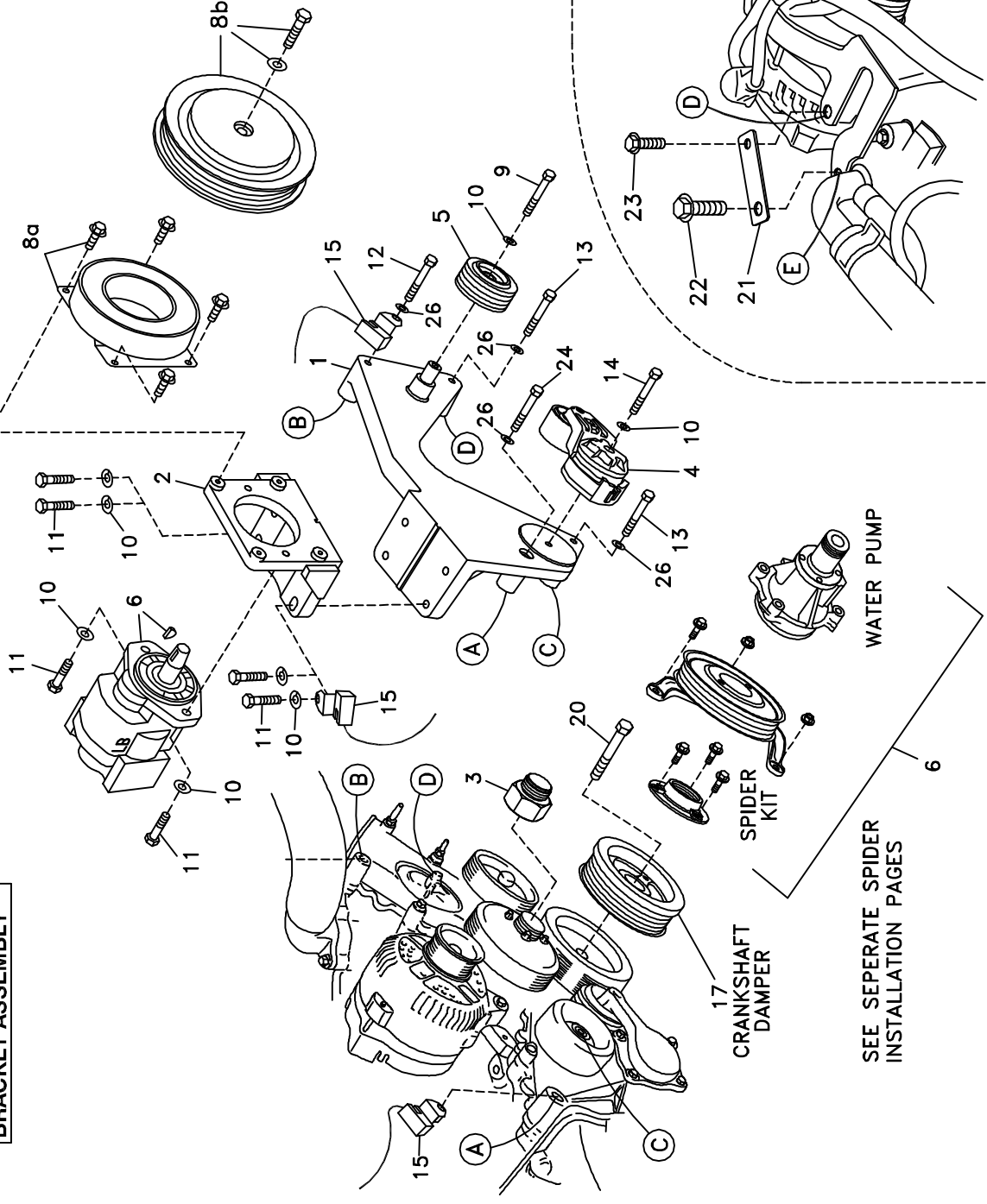
**FIG. 3**  
**AIRBOX MODIFICATION**



**FIG. 5**



**FIG. 2**  
**BRACKET ASSEMBLY**



**FIG. 4**  
**MODIFY ALTERNATOR BRACKET 2009+**

# DewEZE Clutch Pump Kit 700476

Ford 5.4L, w/Spider, A Pump, 2008+

## INSTALLATION INSTRUCTIONS

1. The installation of this kit requires trained decision-making concerning clearances, tying components together, rerouting, or relocating OEM components, etc. It is impossible to describe all of the clearance and vibration points, etc. in the installation instructions. Therefore, the technician must exercise professional judgment to achieve the best quality installation.
2. Disconnect the battery.
3. Remove the air cleaner assembly.
4. Remove OEM belt. Unthread the fan from the water pump and move it forward into the fan shroud to get it out of the way.
5. Drain the coolant from the radiator.
6. Remove the OEM crankshaft damper. Install the new damper (17) using the OEM bolt. If the OEM bolt is not long enough, use the M12 x 70 bolt (20) supplied in the kit. Replace the OEM water pump with the new water pump (6) with extended hub, using the original water pump pulley. Replace the OEM belt. Install the spider drive (6). Refer to the Spider Installation sheets for these procedures.
7. Install the fan spacer (3) on the water pump. Install the fan onto the fan spacer.
8. On 2009 and later trucks, remove the OEM bracket over the top of the alternator. On the passenger side of the alternator remove .75" from the bracket as in Fig. 4. On the driver's side of the alternator where the loop over the alternator meets the horizontal arc, bend the bracket up 40°. Reinstall this bracket. Place the bridge plate (21) on top of the alternator bracket (from Location D to Location E), using the OEM bolts (22, 23).
9. Remove the nuts holding the capacitors (15) at Locations A and B. Remove the two OEM stud bolts from Locations A and B. Remove the bolt from the OEM idler at Location C, leaving the idler in place.
10. Hold the pump bracket (1) in place on the engine to check for interference. It may be necessary to grind the underneath corner of the pump footmount pad as in Fig. 5. Attach the pump bracket (1) to the engine at Locations A and B using two M8 x 120 bolts (12), placing one capacitor (15) on top of the bracket before inserting the bolt at Location B. Attach the bracket at Locations C (on top of the existing idler) and D with two M8 x 50 bolts (13).
11. Install the tensioner (4) on the pad on the passenger side of the bracket with an M10 x 80 bolt (14) and 3/8 flat washer (10) placing the locating pin in the small hole.
12. Attach the idler (5) to the boss on the driver's side of the pump bracket with the M10 x 60 bolt (9) and 3/8 flat washer (10).
13. Install the pump footmount (2) to the pad on top of the bracket, aligning the keyway on the footmount with the key on the bracket. Place the other capacitor (15) on the rear bolt hole. Loosely thread four 3/8 x 1 1/4 bolts (11) and four 3/8 flat washers (10) into the holes.
14. Attach the pump (7) to the back of the footmount (2) using two 3/8 x 1 1/4 bolts (11) and two 3/8 flat washers (10).
15. Attach the clutch coil (8a) to the front of the pump plate using the four 1/4 x 1/2 flange bolts provided with the clutch. Attach the clutch pulley (8b) to the pump shaft using the 5/16 x 1 1/4 bolt and heavy flat washer provided with the clutch. Using a

straightedge, line up the clutch pulley, spider pulley and idler. Tighten the four footmount bolts (11).

16. Install the new belt (16) as shown in Fig. 1.
17. Set the airbox (18) in place and check to see if it contacts the pump or bracket. If it does, it is necessary to remove part of the airbox for clearance. Cut the web between the chamber and the main tube. Cut the connecting tube flush with the chamber leaving about one inch of tube. Apply a heat-resistant adhesive to the tapered silicone plug (19) and insert completely into hole.
18. Replace the coolant. Connect the battery.
19. Make sure all bolts are tight. Run the engine and check for any clearance or alignment problems. Adjust as needed.