

DEWEZE CLUTCH PUMP KIT

None	Bracket Assy.		Kit No.	700465
711831	Bracket Bolt Pkg. (Inc. items 8-10, 22)		Make	Chevrolet/GMC
None	Pulley Bolt Pkg.		Engine	6.0L
711832	Idler Bolt Pkg. (Inc. items 4, 5, 10, 11, 18-20)		Fuel	Gas
None	Fan Spacer Bolt Pkg.		Year	2007
			Equipment	With A/C
			Revised	NC 3-28-07

ITEM	PART #	DESCRIPTION	ITEM	PART #	DESCRIPTION
1.	715014	Alt/power steer. bracket	13.	OEM	Bracket mount bolt
2.	711216	Foot mount	14.	OEM	Alternator bolt
3.	740294	Idler pulley	15.	711365	Idler bracket
4.	711073	Idler bushing	16.	OEM	Alternator
5.	711829	Idler bushing	17.	740336	Belt/Dayco 5061223
6.	*	Pump	18.	110215	M10 x 120 x 1.5 Bolt
7.	740144	Clutch	19.	110181	M10 x 130 x 1.5 Bolt
8.	110425	3/8-16 x 1 1/4 Bolt	20.	110526	M10 x 40 x 1.5 Bolt
9.	110672	3/8 Lock washer	21.	711830	Radiator support bracket
10.	110676	3/8 Flat washer	22.	112012	1 1/4" Muffler clamp
11.	110404	3/8-16 x 1 3/4 bolt	23.	OEM	Radiator support bolt
12.	OEM	Power steer. pump bolt			

* See master list for pump part no.

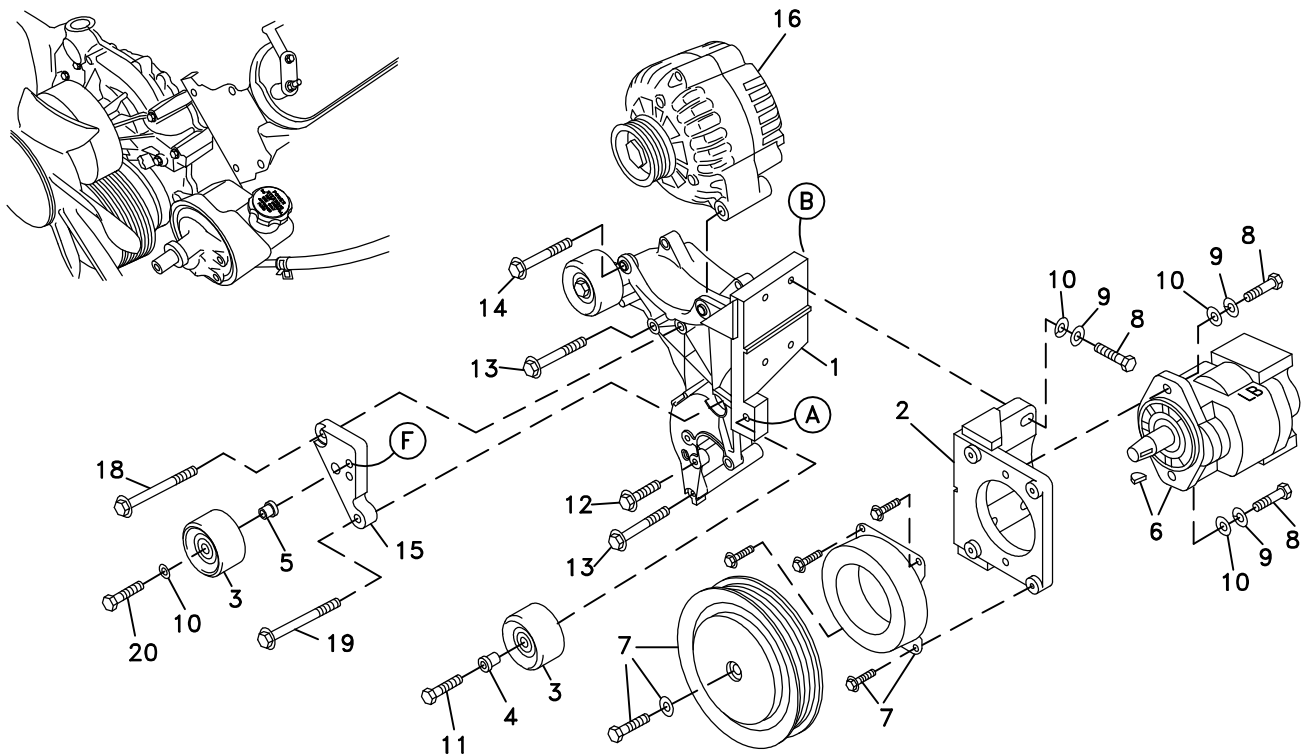
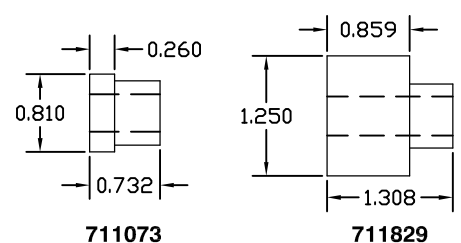


FIG. 2 IDENTIFYING THE BUSHINGS



(A),(B),(C)... Denotes bolt holes in engine to locate corresponding holes in Pump Brkt.

FIG. 3 BELT DIAGRAM

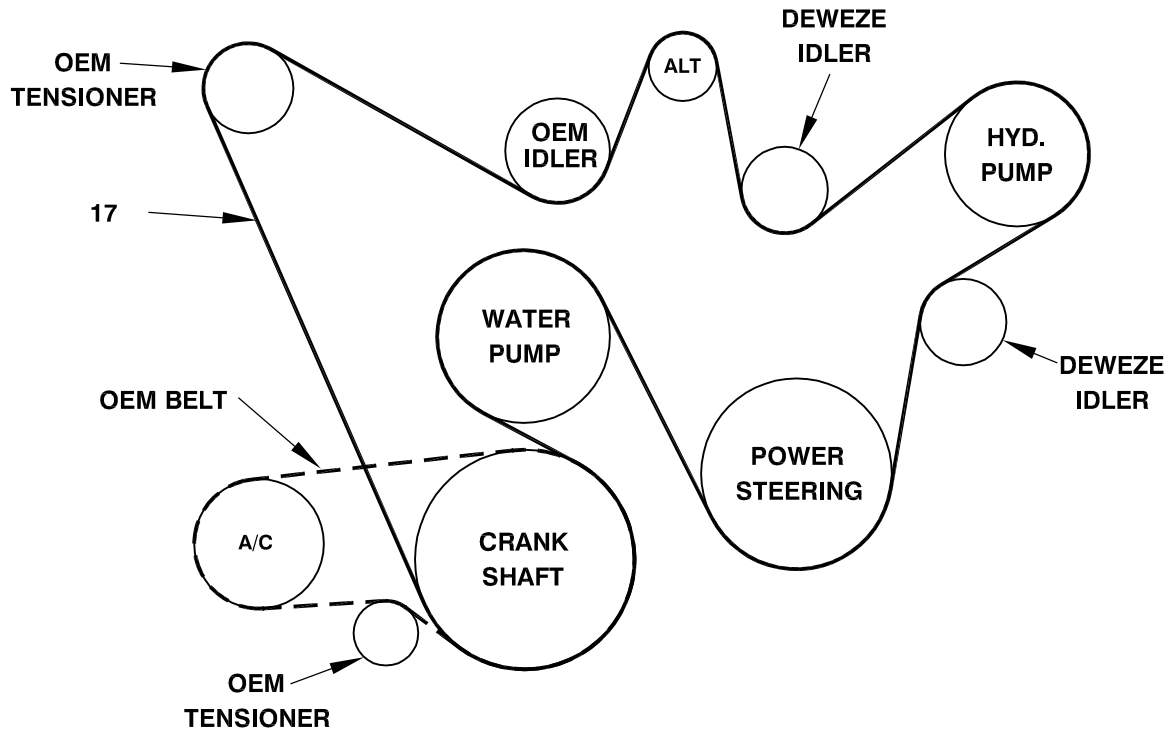
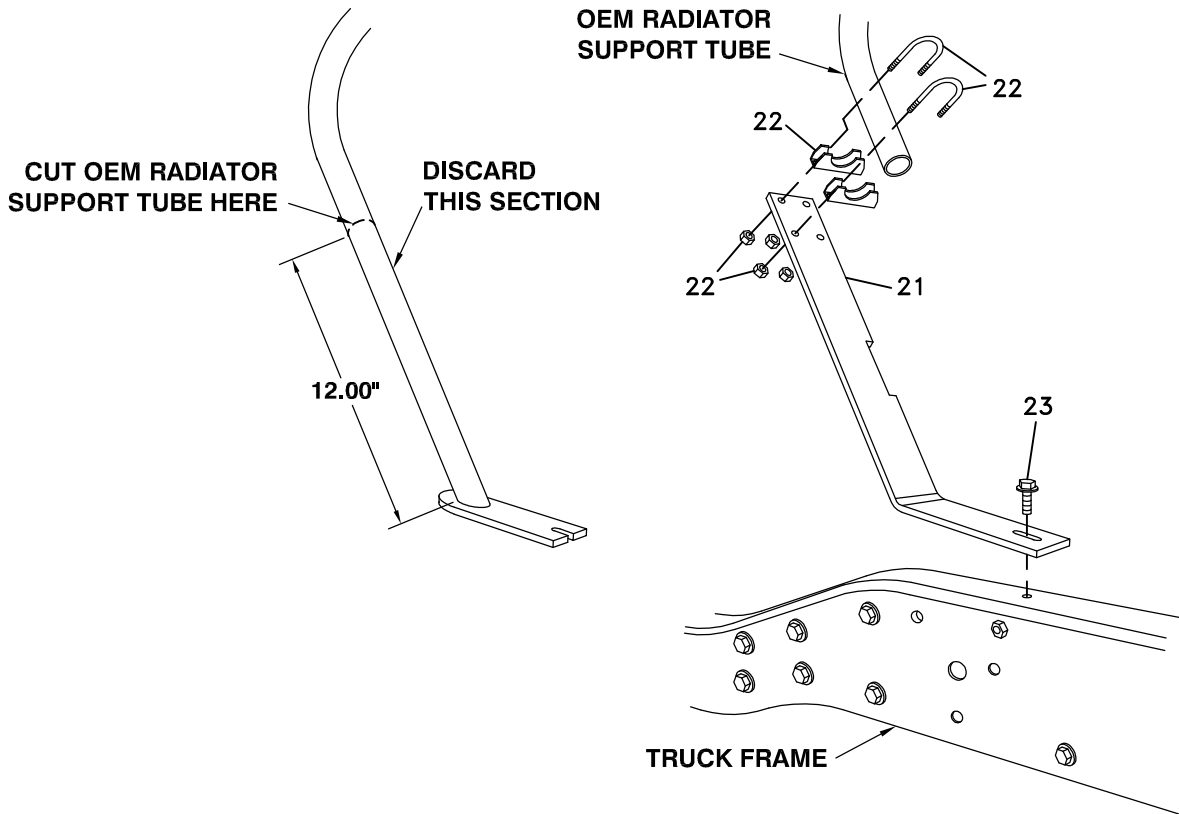


FIG. 4 MODIFY RADIATOR SUPPORT



DewEze

Clutch Pump Kit
#700465
Chevrolet/
GMC 6.0L
'A' mount
2007 +

INSTALLATION INSTRUCTIONS

1. The installation of this kit requires trained decision-making concerning clearances, tying components together, rerouting, or relocating OEM components, etc. It is impossible to describe all of the clearance and vibration points, etc. in the installation instructions. Therefore, the technician must exercise professional judgment to achieve the best quality installation.
2. Disconnect the battery.
3. Remove the OEM serpentine belt.
4. Measure 12.00" up from the base of the radiator support tube on the driver's side as shown in Fig. 4. Cut the tube at that mark and discard the lower section. Save the bolt. Hold the replacement bracket (21) in front of the tube and setting on the truck frame. Thread the OEM bolt (23) through the bracket into the frame. Do not tighten yet. Place the two muffler clamps (22) around the tube and into the holes at the top of the bracket. Secure with the supplied nuts (22). Tighten the nuts and bolt.
5. Remove alternator (16) from the alternator bracket by removing two bolts. Keep these bolts.
6. Make a note of how far the power steering pulley is on the shaft so it can be reinstalled in the same position. Remove the power steering pulley using a pulley removal tool. Remove the three bolts holding the power steering pump to the power steering-alternator bracket. Keep these bolts.
7. Remove the four bolts mounting the alternator bracket to the engine and keep these bolts.
8. Remove the OEM idler from the OEM alternator bracket and put it on the DewEze alternator bracket (1) in the same location using the OEM bolt. Insert the 3/8 x 1 3/4 bolt (11) through the shoulder side of the idler bushing (4) and into the DewEze idler (3). Bolt this idler to the alternator bracket at location A.
9. Attach the alternator bracket to the engine at the same location as the OEM bracket using the four OEM bolts (13). Attach the power steering pump to the alternator bracket using the three OEM bolts (12). Start the pulley onto the shaft. Using a pulley installer tool press the pulley on until it is lined up with the crank pulley using a straightedge across both pulleys. Attach the alternator to the top of the bracket using the two OEM bolts (14). Attach the battery cable bracket (5) to the alternator bracket using the OEM bolts (15).

10. Mount the clutch coil (7) onto the front of the footmount using the four w/z flange bolts provided with the clutch. Attach the pump footmount (2) to the side of the alternator bracket using four 3/8 x 1 1/4 bolts (8) with 3/8" lock washers (9) and 3/8" flat washers (10) aligning the groove so it will slide freely forward and back. Do not tighten the bolts yet.
11. Attach the pump (6) to the back of the pump footmount (2) using two 3/8 x 1 1/4 bolts (10), and two 3/8 flat washers (29).
12. Place the key in the pump shaft and slide the clutch pulley onto the pump shaft. Thread the bolt with flat washer, supplied with the clutch, into the shaft and tighten. Line up the pump pulley with the crank pulley by sliding the footmount in or out using a straightedge across both pulleys. When the pulleys are aligned, tighten the bolts mounting the footmount.
13. Install the serpentine pump drive belt (17).
13. Connect the battery.
14. Run the engine and check for any clearance or alignment problems. Adjust as needed.