

Ford LCF / International CF600, 4.5L : D, 2005+, A Pump, CCW (Reverse) Rotation, Side Port

Bolt Packages:

Bracket	711734	(Inc. item 9-13)
Fan spacer	711735	(Inc. item 5, 14, 15)
Crank pulley	None	
Tensioner	None	

Bracket Assy.	711736	(Inc. items 1-4)
Issue Date	10-18-05	Revision Date A 11-9-05

Item Part No. Description

1.	711730	Top alternator bracket	14.	110262	M10 x 1.5 x 75 Bolt
2.	711731	Front support bracket	15.	110676	3/8 Flat washer
3.	711732	Pump plate	16.	711740	Hose elbow
4.	711733	Idler bracket	17.	102029	Hose splice
5.	711619	Idler bushing	18.	OEM	Tube, heater line
6.	740261	Idler	19.	520099	Hose clamp
7.	*	Pump (CCW, sideport)	20.	740360	Belt, Poly Cog 1490K8
8.	742009	Clutch	21.	110425	3/8-16 x 1 1/4 Hex Bolt
9.	110488	M10 x 1.5 x 45 Bolt	22.	110672	3/8 Lock washer
10.	110183	M10 x 1.5 x 100 Bolt			
11.	110404	3/8-16 x 1 3/4 Bolt			
12.	110526	M10 x 1.5 x 40 Bolt			
13.	110465	3/8-16 x 1 1/4 Socket head bolt			

* See pump list for sizes and part numbers.

FIG. 1
BELT DIAGRAM

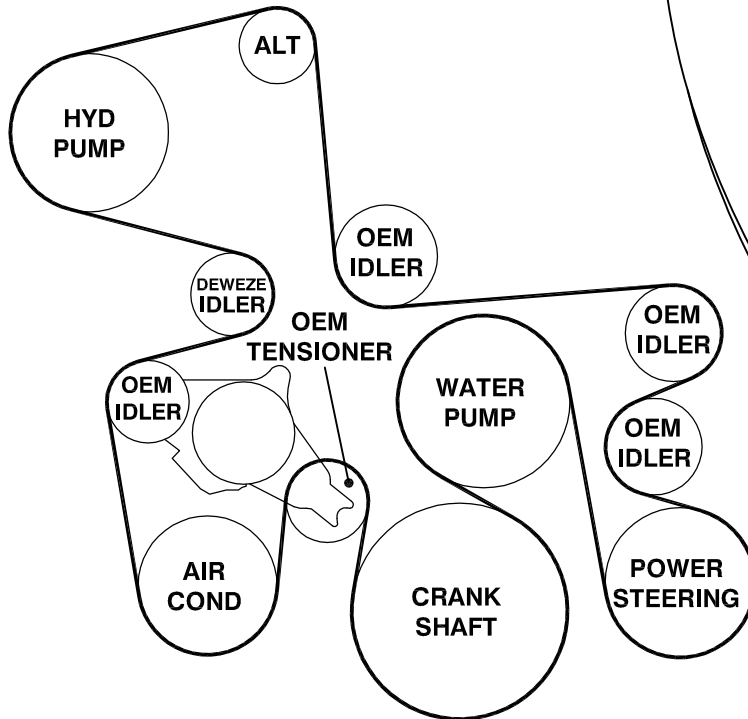


FIG. 2
HEATER LINE CUT OFF

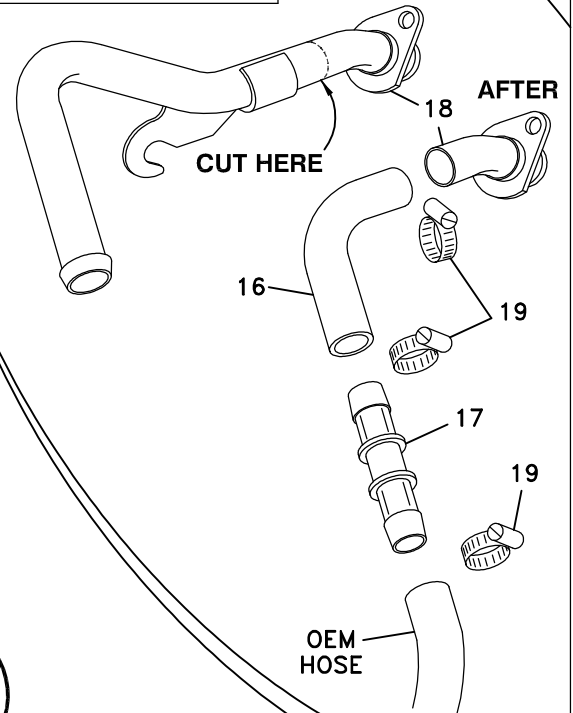
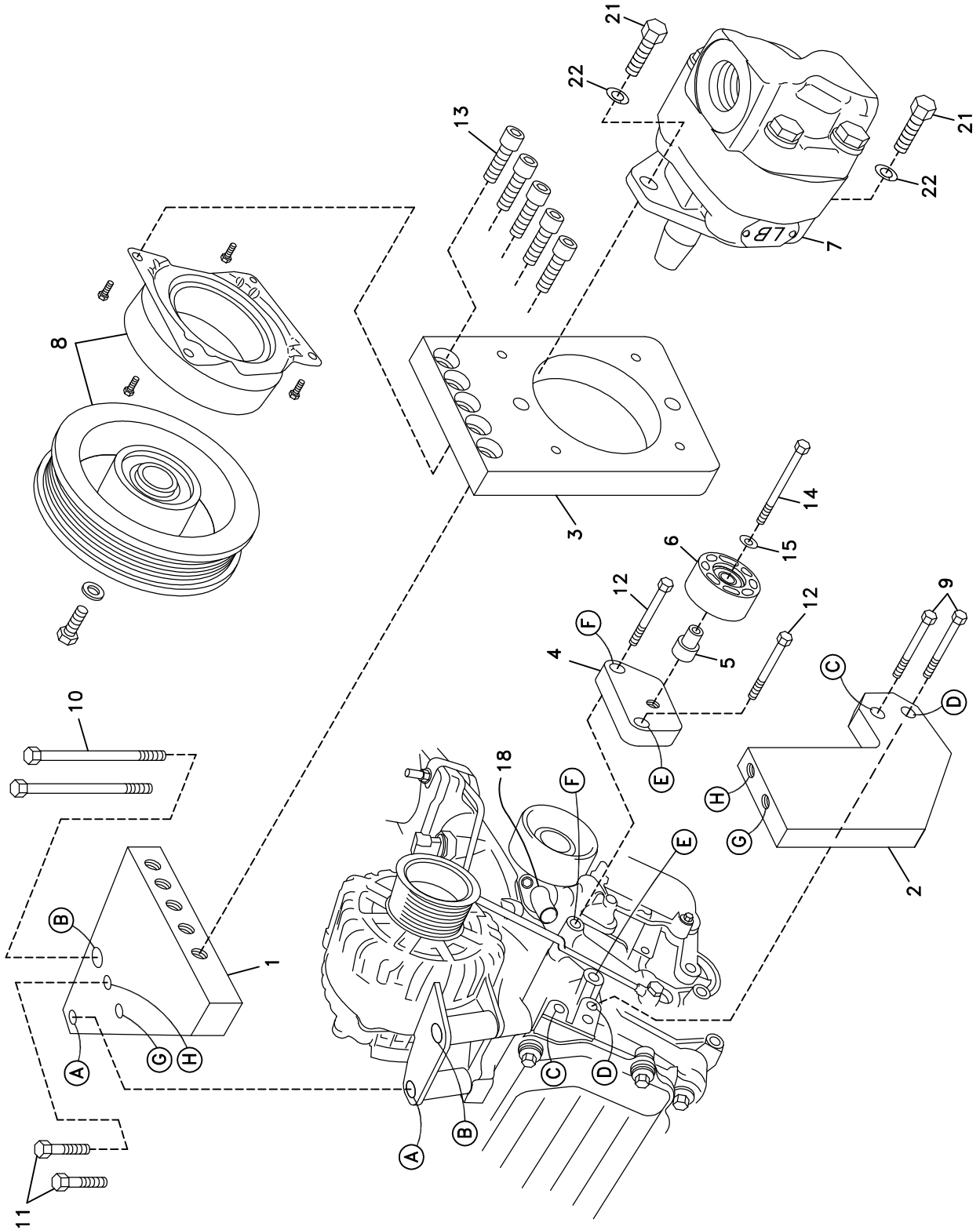


FIG. 3



DewEze

Clutch Pump Kit

#700447
Ford LCF/
Inter. CF600
'A' mount
2006-

INSTALLATION INSTRUCTIONS

1. Disconnect the battery.
2. Drain the radiator down far enough to remove the metal heater tube (18) from front of engine.
3. Remove the intercooler tube. Remove the engine lift bracket.
4. Remove the support bracket for the coolant reservoir hoses.
5. Remove the OEM belt and lock the tensioner open.
6. Remove the metal heater tube (18). Cut it off midway between the bend and the mounting tab as shown in Fig. 2.
7. Mount the front support bracket (2) to the engine at Locations C and D with two M10 x 45 bolts (9). Mount the top bracket (1) to the alternator by replacing the OEM bolts with two M10 x 100 bolts (11). Attach the top bracket to the front bracket with two 3/8 x 1 3/4 bolts (11). Tighten all bolts.
8. Mount the idler bracket (4) to the front of the engine at Locations E and F with two M10 x 40 bolts (12). Push the idler bushing (5) into the back (the side without the snap ring) of the idler pulley (6). Insert the M10 x 75 bolt (14) through a 3/8 flat washer (15), through the idler pulley and bushing and into the threaded hole on the idler bracket.
9. Bolt pump (7) onto pump plate (3) with two 3/8 x 1 1/4 hex head bolts (21) and two 3/8 lock washers (22). Install the fittings to the pump. Attach clutch coil (8) with four 1/4 x 1/2 flange bolts supplied with clutch. Attach clutch pulley (8) to pump shaft with 5/16NF x 1 1/4 bolt and heavy washer supplied with clutch. Mount the pump and plate to the top bracket with five 3/8 x 1 1/4 socket head bolts (13).
10. Reinstall the OEM heater tube (18) that was cut off. Push the hose elbow (16) onto the heater tube, push the hose splice (17) into the elbow, and push the splice into the OEM heater hose that originally connected to the metal tube, securing with the hose clamps (19). Make sure the elbow is rotated so it doesn't contact any moving parts. See Fig. 2.
11. Install the belt (20) as shown in the belt diagram (Fig. 1).
12. Connect the battery.
13. Run the engine and check for any clearance or alignment problems. Adjust as needed.

