

Chevrolet/GMC, 6.6L : D, 2006+, AA Pump, Rear Port

Bolt Packages:

Bracket	711396	(Inc. item 3, 9, 12, 13)
Idler	711738	(Inc. item 2, 4, 10, 11, 15)
Crank pulley	None	
Tensioner	None	

Bracket Assy.	None
Issue Date	10-24-05
Revision Date	NC 10-24-05

Item	Part No.	Description
1.	710099	Pump mount bracket
2.	711009	Idler bushing, .875" flange width
3.	110188	M10 x 80 x 1.5 Socket head bolt
4.	711461	Idler bushing, .210" flange width
5.	711291	Pump plate
6.	740242	Idler pulley
7.	*	Pump / Rear port
8.	740162	Clutch
9.	110217	M10 x 70 x 1.5 Bolt
10.	110487	M10 x 120 x 1.5 Bolt
11.	110210	M10 x 50 x 1.5 Bolt
12.	110101	M10 x 1.5 Lock nut
13.	110395	3/8-16 x 1 Socket head bolt
14.	110425	3/8-16 x 1 1/4 Bolt
15.	110676	3/8 Flat washer
16.	110271	3/8 Lock washer, .55 O.D. x .13 thick
17.	740266	Belt/Poly Cog 1380K6BK

FIG. 1
BELT DIAGRAM

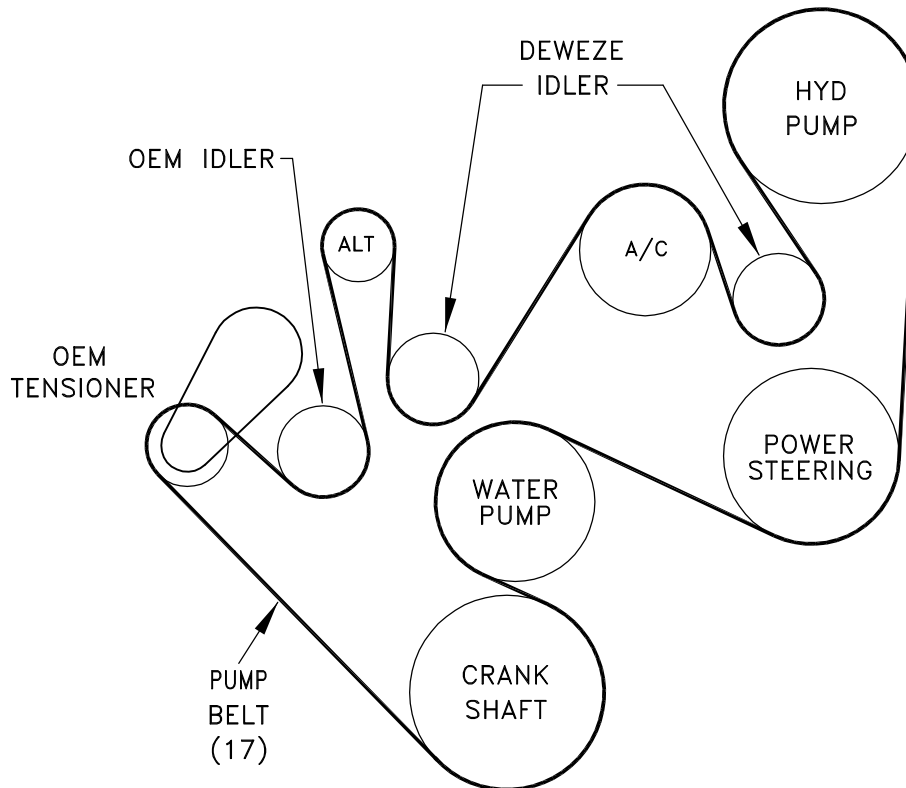
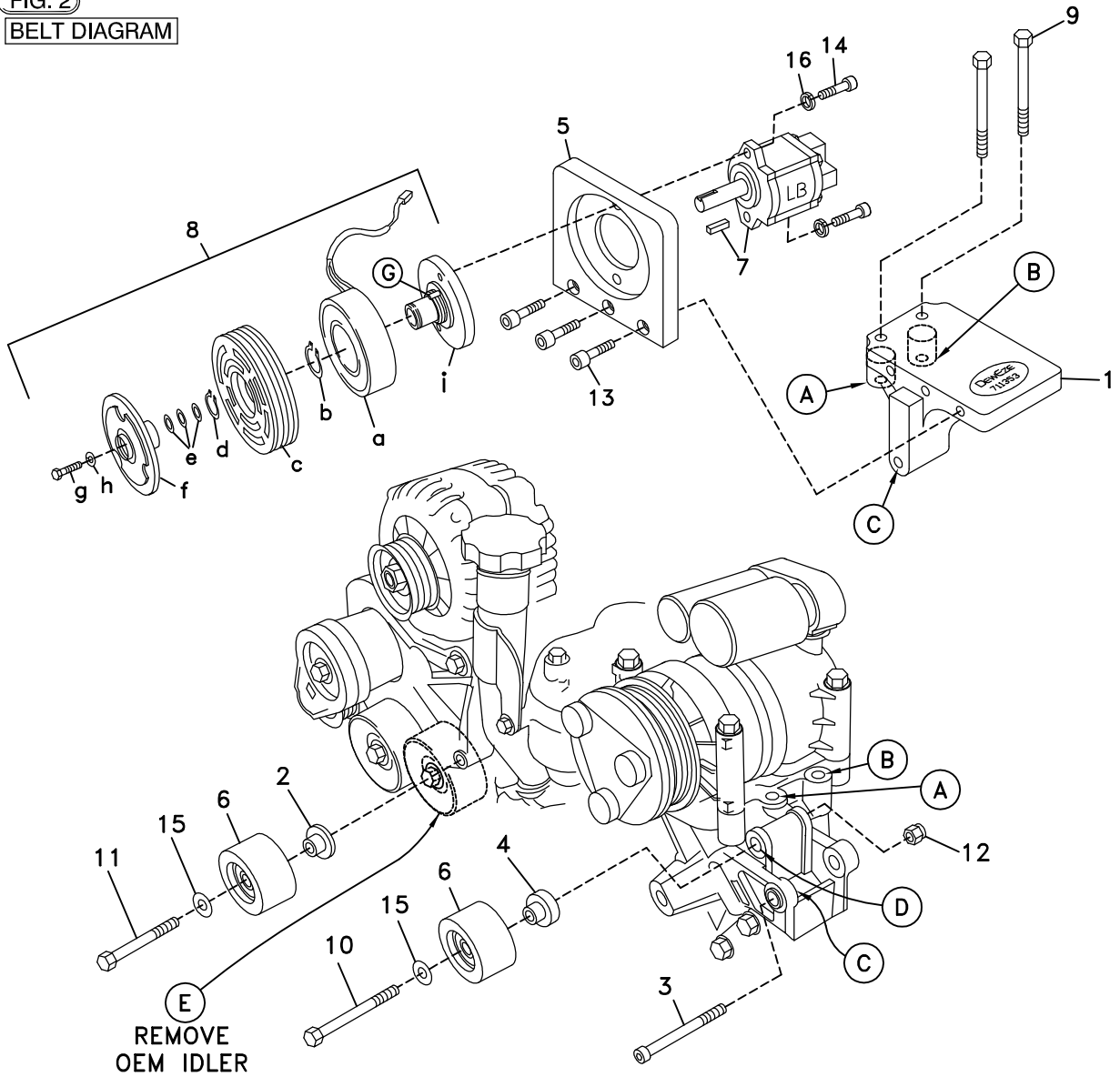
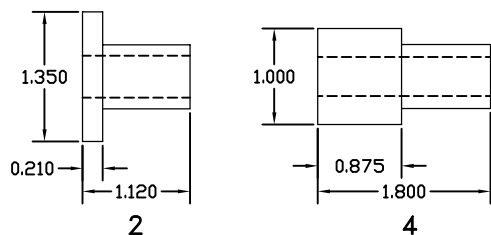


FIG. 2
BELT DIAGRAM



IDENTIFYING THE IDLER BUSHINGS

FIG. 3



DewEze

Clutch Pump Kit

#700446
Chevy 6.6L
with A/C
'AA' mount
2006-

INSTALLATION INSTRUCTIONS

1. Disconnect the battery.
2. Remove the OEM belt. Remove the OEM idler from the alternator bracket at Location E.
3. Bolt the pump plate (5) to the base plate (1) with three 3/8 x 1 socket head bolts (13). Torque to 20 ft-lb.
4. Insert the two M10 x 70 bolts (9) through the holes in the notched end of the base plate (1) and into the air conditioner mounting bracket at locations A and B. Torque to 25 ft-lb. Thread the M10 x 80 socket head bolt (3) into the hole at Location C and through the bottom lug of the pump bracket. Torque to 25 ft-lb.
5. Push the idler bushing (4) into the back (the side without the snap ring) of one of the idler pulleys (6). Insert the M10 x 120 bolt (10) through a 3/8 flat washer (15), through the idler pulley and bushing and into the hole on the air conditioner bracket at location D. Thread the M10 lock nut (12) onto bolt (10). Torque to 25 ft-lb.
6. Push the idler bushing (2) into the back (the side without the snap ring) of the other idler pulley (6). Insert the M10 x 50 bolt (11) through a 3/8 flat washer (15), through the idler pulley and bushing and into the hole on the alternator bracket at location E. Torque to 25 ft-lb.
7. Hold pump (7) onto back of mounting plate (5) and clutch hub (8i) onto front of mounting plate, making sure clutch wire and anti-rotation pin (G) on front of hub is on the top. Place two 3/8 x 1 1/4 socket head bolts (14) with 3/8 high collar lock washers (11) through pump, through mounting plate and thread into hub.
8. Slide coil (8a) over hub, aligning hole in the back plate of coil with the anti-rotation pin (G) in the hub. The wires from the coil should be on the same side as the pin (G). Install large snap ring (8b) to hold coil in place.
NOTE: THE BEVEL ON BOTH SNAP RINGS MUST FACE AWAY FROM THE PUMP. REFER TO INSTRUCTION SHEET FOR THE CLUTCH FOR CORRECT INSTALLATION OF SNAP RINGS.
9. Slide clutch pulley (8c) onto hub. Install small snap ring (8d) to hold pulley in place.
10. Place the key (7) onto the pump shaft. Slide the hub/armature (8f) onto the pump shaft aligning the keyways.
NOTE: SET THE AIR GAP BETWEEN THE HUB/ARMATURE AND THE PULLEY USING SHIMS (8e) ACCORDING TO INSTRUCTION SHEET FOR CLUTCH.
11. Thread bolt (8g) and lock washer (8h) into pump shaft. Torque to value in clutch instruction sheet.
12. Install the belt (16) as shown in the belt diagram (Fig. 2).
13. Connect the battery.
14. Run the engine and check for any clearance or alignment problems. Adjust as needed.