

Hino 185, 289 cu. in. :G, 2003+, A Pump, 5, 7, 9 GPM, Rear Port

Bolt Packages:

Bracket	711674	(Inc. item 12-17, 22)
Fan spacer	711675	(Inc. item 19)
Crank pulley	711676	(Inc. item 18)
Tensioner	None	

Bracket Assy. 711673 (Inc. items 1-5)

Issue Date 2-2-05 Revision Date E 4-3-06

Item	Part No.	Description
1.	711668	Engine bracket
2.	711669	Pump plate
3.	711670	Top plate
4.	711671	Alternator bracket
5.	711672	Tensioner bracket
6.	700275	Fan spacer
7.	740391	Crankshaft pulley
8.	742034	Tensioner
9.	*	Pump
10.	742016	Clutch
11.	110425	3/8-16 x 1 1/4 Bolt
12.	110526	M10 x 1.5 x 40 Bolt
13.	110465	3/8-16 x 1 1/4 Socket head bolt
14.	110559	M8 x 1.5 x 40 Bolt
15.	110676	3/8 Flat washer
16.	110420	3/8-16 x 1 Bolt
17.	110705	M10 x 1.5 x 55 Bolt
18.	110773	M12 x 1.5 x 100 Bolt
19.	110144	M8 x 1.25 x45 Stud bolt
20.	OEM	Nut
21.	742023	Belt, Micro-V K060415
22.	110204	Shim, 1.00 O.D. x .668 I.D. x .015 thick

* See pump list for sizes and part numbers.

FIG. 1

BELT DIAGRAM

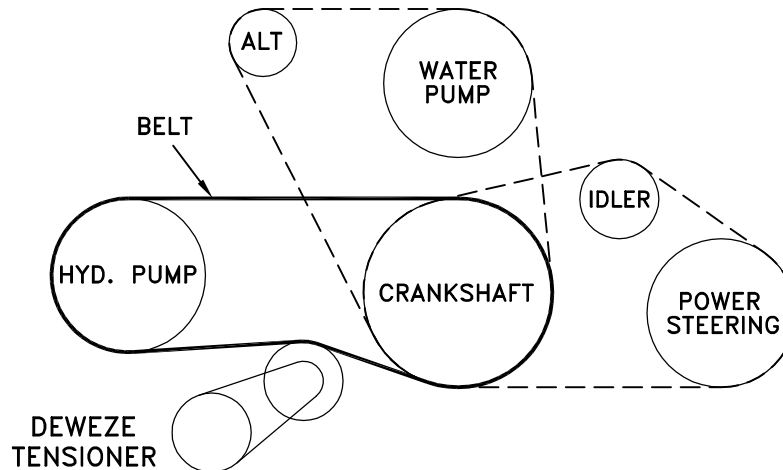
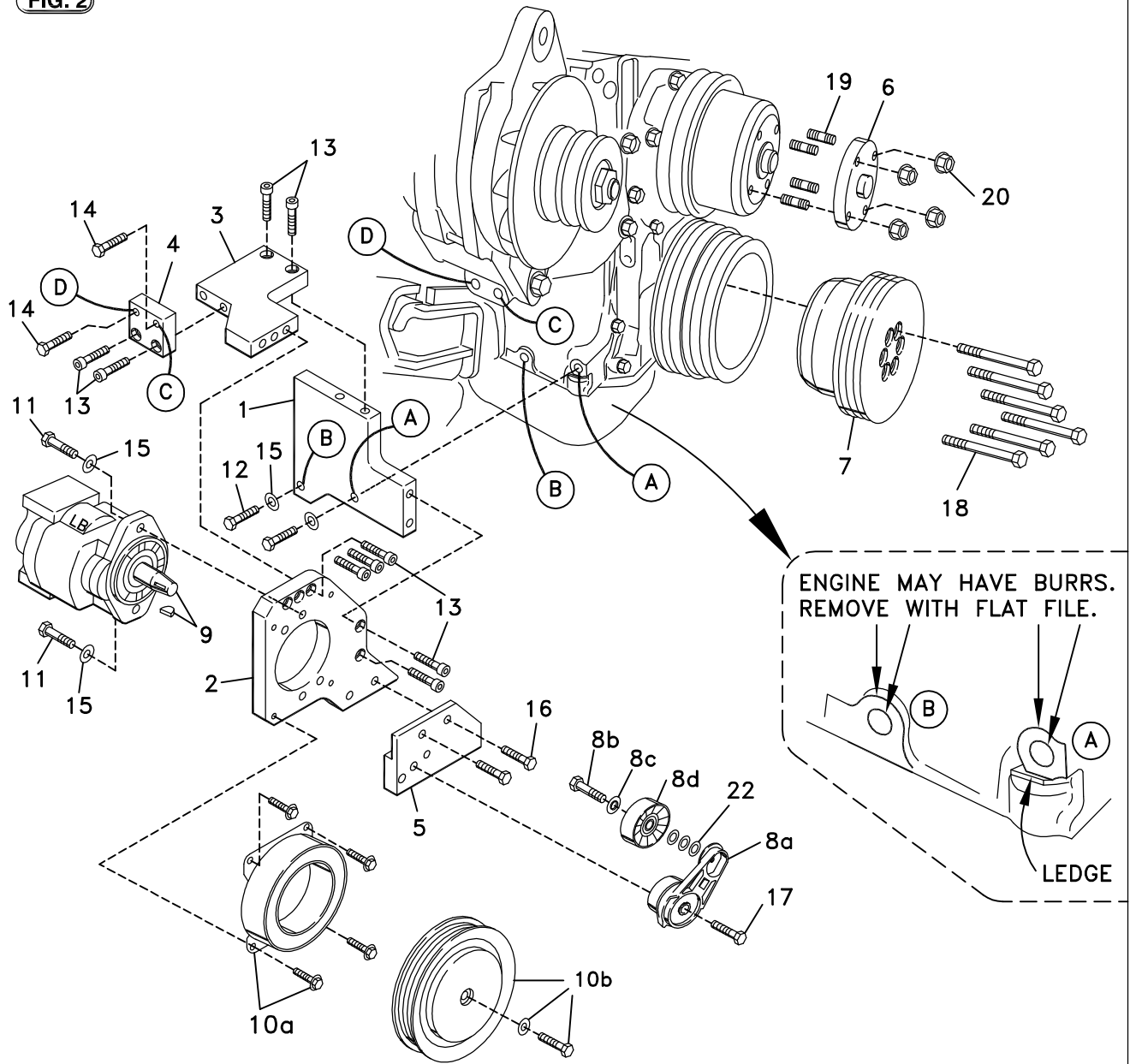
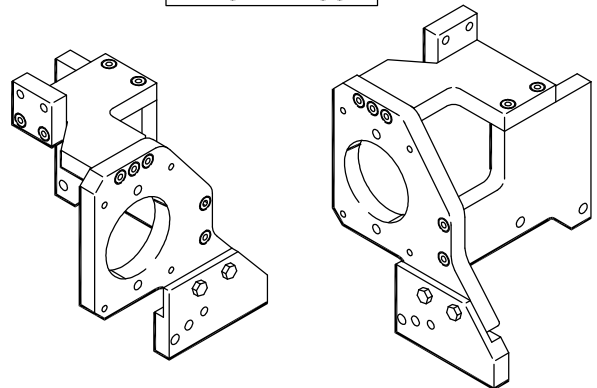


FIG. 2



BRACKET ASSY.



DEWEZE

Clutch Pump Kit

Clutch Pump Kit
700438
Hino 185
'A' mount
2005+

INSTALLATION INSTRUCTIONS

1. The installation of this kit requires professional judgment concerning clearances, tying components together, rerouting, or relocating OEM components, etc. It is impossible to describe all of the clearance and vibration points, etc. in the installation instructions. Therefore, the technician must exercise professional judgment to achieve the best quality installation.
2. Disconnect the battery.
3. Remove the passenger side inner fender and support bracket for easier access to the engine.
4. Drain the coolant down to remove the top radiator hose. Remove the radiator support rod. Remove the intercooler tube.
5. Remove the fan shroud and fan. Remove the OEM fan stud bolts. Replace with the M8 x 45 stud bolts (19).
6. Attach the crank pulley (7) with six M12 x 1.5 x 100 bolts (18).
7. Check the bracket mounting bosses on the engine at Locations A and B for burrs. If burrs are present, remove them with a flat file. Do not use a grinder, as that would remove too much material and change the bracket alignment. Attach the top plate (3) to the engine bracket (1) with two 3/8 x 1 1/4 socket head bolts (13). Attach the alternator bracket (4) to the edge of the top plate with two 3/8 x 1 1/4 socket head bolts (13). Place these brackets on the engine at Locations A, B, C, and D. There is a ledge below the hole at Location A. Be sure to set the bracket above the ledge so the bracket does not get hung up outside the ledge which would change the bracket alignment. Fasten the bracket with two M10 x 40 bolts and two 3/8 flat washers (15) at Locations A and B and two M8 x 40 bolts at Locations C and D into the bottom of the alternator. Snug these bolts evenly – tighten bolts at A and B a little, then the bolts at C and D the same, then back to A and B, then C and D until they are all tight. Tightening bolts A and B all the way, then tightening bolts C and D would put the bracket in a bind causing it to break.
8. Attach the pump (9) to the pump plate (2) with two 3/8 x 1 1/4 bolts (11) with two 3/8 flat washers (15). Attach the pump plate with pump to the engine bracket with five 3/8 x 1 1/4 socket head bolts (13).
9. Mount the clutch coil (10a) with the four 1/4 x 1/2 flange head bolts provided with the clutch. Mount the clutch pulley (10b) with the 5/16 x 1 1/4 bolt and heavy flat washer provided with the clutch.
10. Attach the tensioner bracket (5) to the pump plate with two 3/8 x 1 bolts (16). Unbolt the idler pulley (8d) from the tensioner arm (8a). Place the three .015” shims (22) on the idler boss on the tensioner. Replace the idler on the boss, place the OEM washer (8c) on the idler, and thread the OEM bolt (8b) back into the tensioner. Mount the tensioner assembly (8) to the bracket with the M10 x 55 bolt (17).
11. Put the belt (21) in place on the pulleys. Mount the fan spacer on the stud bolts. Replace the fan and fan shroud. Replace the OEM nuts onto the stud bolts.
12. Replace the radiator hose and the coolant. Replace the OEM intercooler tube using the OEM clamps. Replace the radiator support rod. Replace the inner fender.
13. Reconnect the battery.
14. Run the engine and check for any clearance or alignment problems. Adjust as needed.