

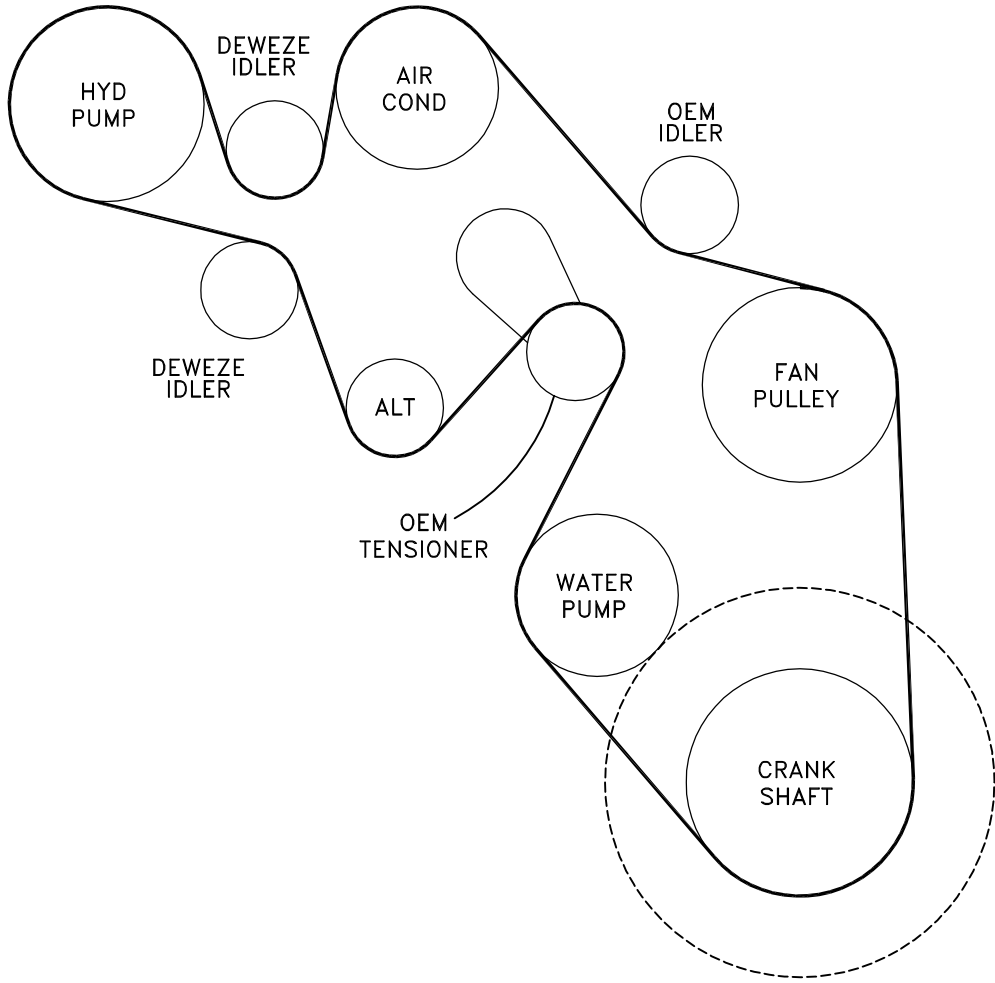
Bracket Assy.	711563 (Inc. items 1-4)
Bolt Packages:	
Bracket	711564 (Inc. items 10-12)
Pulley	None
Idler	711565 (Inc. items 5, 6, 13, 14, 17)
Tensioner	None

Make	Ford F-650, F-750	
Engine	Cat 3126	
Fuel	Diesel	
Year	2004-	
Equipment	Turbo, A/C	
Revised	NC	8-26-03

Item	Part No.	Description
1.	711558	Pump mount plate
2.	711559	Bridge plate
3.	711560	A/C bracket
4.	711561	Alternator spacer
5.	711226	Idler bushing .775"
6.	711562	Idler bushing .350"
7.	740261	Idler
8.	*	Pump
9.	740148	Clutch
10.	110745	3/8-16 x 1 1/2 Gr. 8 Bolt
11.	110292	M8 x 120 x 1.25 Gr 10.9 Bolt
12.	110275	M10 x 140 x 1.5 Socket head bolt
13.	110180	M10 x 60 x 1.5 Gr 10.9 Bolt
14.	110210	M10 x 50 x 1.5 Gr 10.9 Bolt
15.	110425	3/8-16 x 1 1/4 Bolt
16.	110672	3/8 Lock washer
17.	110676	3/8 Flat washer
18.	OEM	Clamp bracket
19.	742011	Belt, Poly Cog 5081000

\*See master list for part no.

**FIG. 1**  
**BELT DIAGRAM**



A, B, C... Denotes bolt holes in engine to locate corresponding holes in Pump Brkt.

FIG. 2

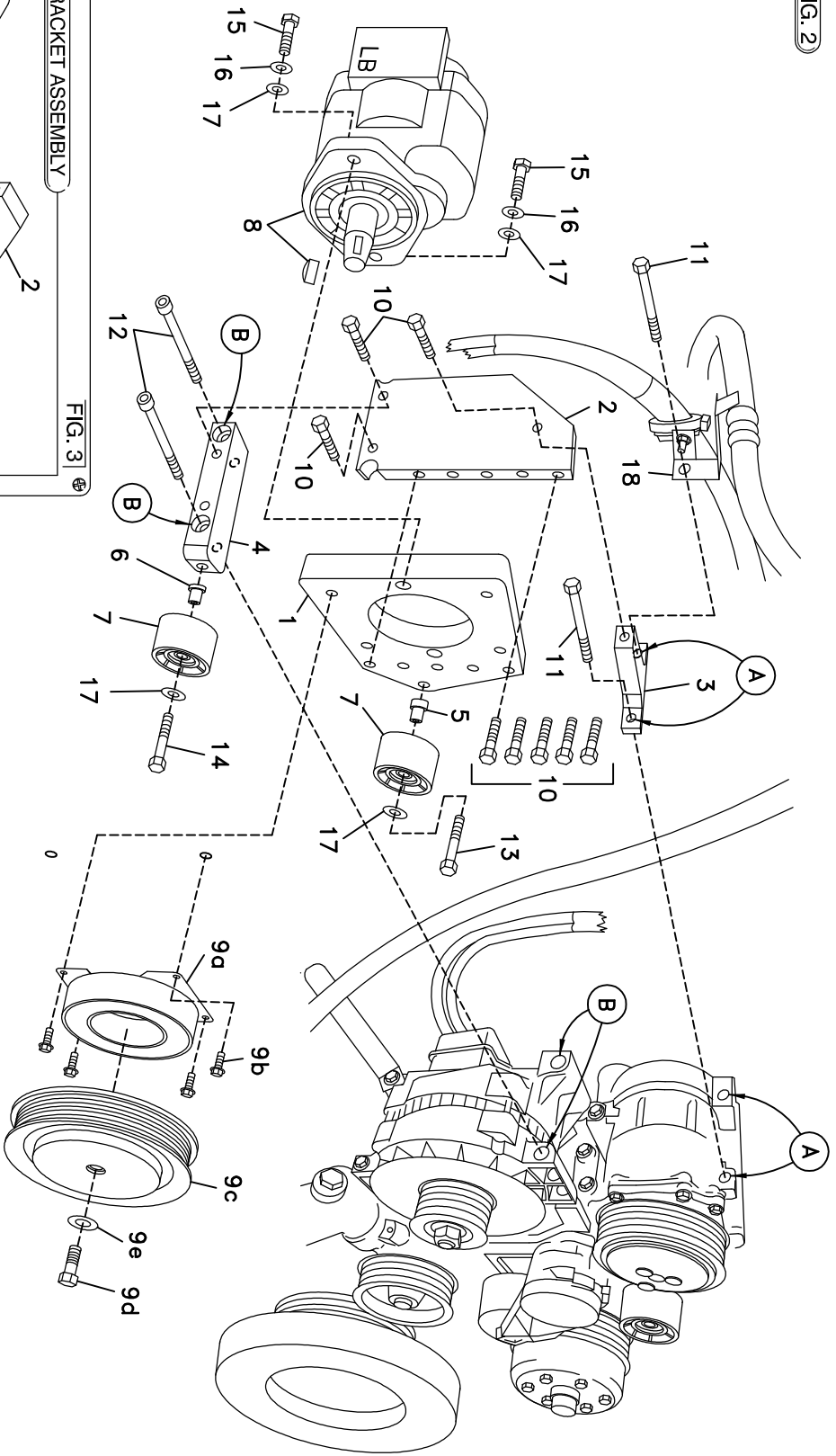
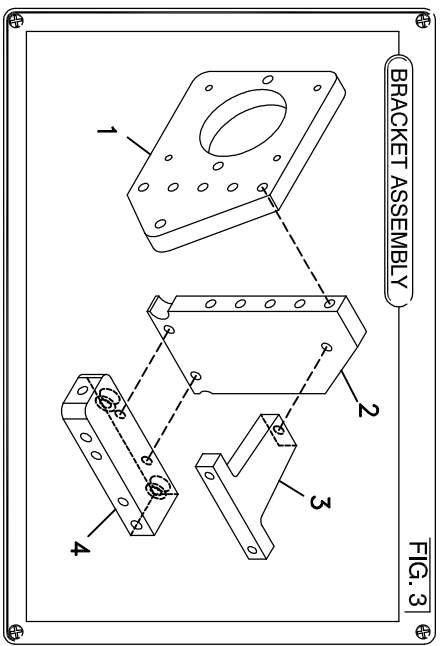


FIG. 3



# DewEze

## Clutch Pump Kit

700418  
Ford  
F-650, 750  
Cat 3126  
2004-

### INSTALLATION INSTRUCTIONS

---

1. Disconnect the battery.
2. Remove the intercooler tube on the passenger side.
3. Remove the OEM belt.
4. Remove the top two air conditioner compressor bolts at Location A along with the hose clamp bracket. Mount the DewEze A/C bracket (3) at that location loosely threading one M8 x 120 bolt (11) with Loctite® in the front hole. The A/C line may need to be pulled out a little bit and the plastic clamp turned around to fit. Hold the OEM clamp bracket (18) in place over the rear hole of the DewEze bracket (3) and loosely thread the other M8 x 120 bolt in with Loctite®. Do not tighten bolts until all brackets are in place.
5. Remove the top alternator bolts at Location B. Mount the alternator spacer (4) at that location using two M10 x 140 socket head bolts (12) with Loctite®. Do not tighten the bolts yet.
6. Mount the bridge plate (2) onto bracket (3) and spacer (4) with three 3/8 x 1 1/2 bolts (10) with Loctite®. Now tighten all bolts in brackets 2, 3, and 4.
7. Bolt the pump (8) onto the pump plate (1) using two 3/8 x 1 1/4 bolts (15), two 3/8 lock washers (16), and two 3/8 flat washers (17). Mount the clutch coil (9a) using the four 1/4 x 1/2 flange bolts (9b) supplied with the clutch.
8. Attach the pump plate (1) with pump to plate (2) using five 3/8 x 1 1/2 bolts (10) with Loctite®.
9. Insert idler bushing (5) (flange thickness of .775") into idler (7). Mount this idler to pump plate (1) with the M10 x 60 bolt (13) with Loctite® and a 3/8 flat washer (17).
10. Insert idler bushing (6) (flange thickness of .350") into idler (7). Mount this idler to alternator spacer (4) with the M10 x 50 bolt (14) with Loctite® and a 3/8 flat washer (17).
11. Mount the pump pulley (9c) to the pump shaft with the 5/16 x 1 1/4 bolt (9d) and heavy flat washer (9e) supplied with the clutch.
12. Install the belt (19) as shown in the diagram (Fig. 1).
13. Before installing the intercooler tube, .75" will need to be cut off the turbo side of the orange hose. This will lower the tube so it will clear the pump.
14. Run the engine and check for any clearance or alignment problems. Adjust as needed.