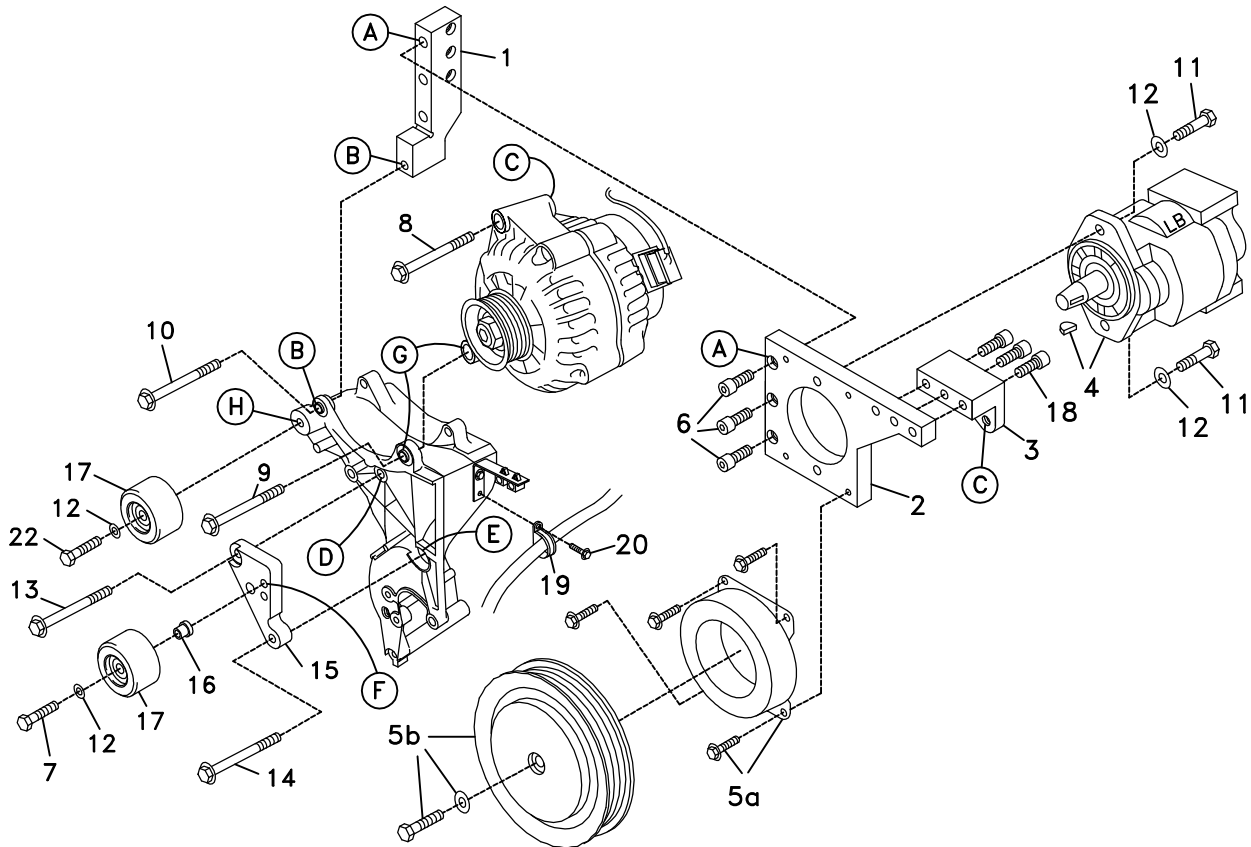


<b>Bracket Assy.</b>	711453 (Inc. items 1-3, 15)
<b>Bolt Packages:</b>	
<b>Bracket</b>	711456 (Inc. items 6, 8, 18, 19)
<b>Pulley</b>	None
<b>Idler pulley</b>	711368 (Inc. items 7, 12, 16)
<b>Idler bracket</b>	711370 (Inc. items 13, 14)
<b>Tensioner</b>	None

<b>Make</b>	Chevrolet/GMC Van	
<b>Engine</b>	6.0L	
<b>Fuel</b>	Gas	
<b>Year</b>	2003-	
<b>Equipment</b>	A/C	
<b>Revised</b>	B	6-15-05

Item	Part No.	Description
1.	711355	Engine bracket
2.	711454	Pump bracket
3.	711455	Alternator bracket
4.	*	Pump
5.	740144	Clutch
6.	110465	3/8-16 x 1 1/4 Socket head bolt
7.	110526	M10 x 40 x 1.5 Bolt
8.	110217	M10 x 70 x 1.5 Bolt
9.	OEM	Bolt
10.	OEM	Bolt
11.	110425	3/8-16 x 1 1/4 Bolt
12.	110676	3/8 Flat washer
13.	110215	M10 x 120 x 1.5 Bolt
14.	110181	M10 x 130 x 1.5 Bolt
15.	711365	Idler bracket
16.	711366	Idler bushing
17.	740294	Idler pulley
18.	110711	3/8-16 X 2 Socket head bolt
19.	200020	Adel clamp
20.	OEM	Bolt
21.	740336	Belt, Poly-Cog 5061223
22.	OEM	Bolt

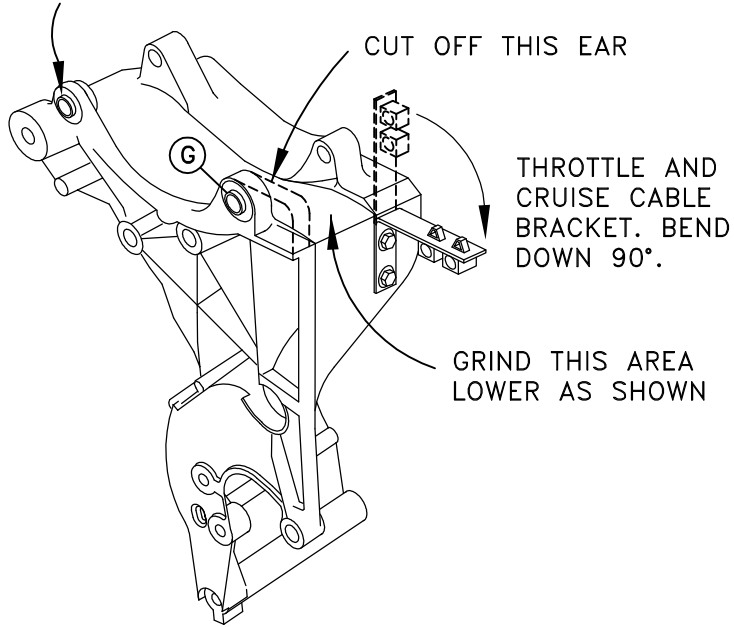
**FIG. 1**



**FIG. 2**

**OEM BRACKET MODIFICATION**

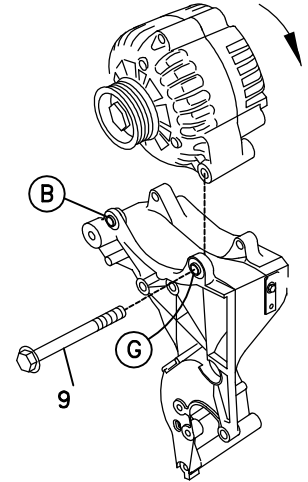
GRIND THIS BUSHING FLUSH



**FIG. 4**

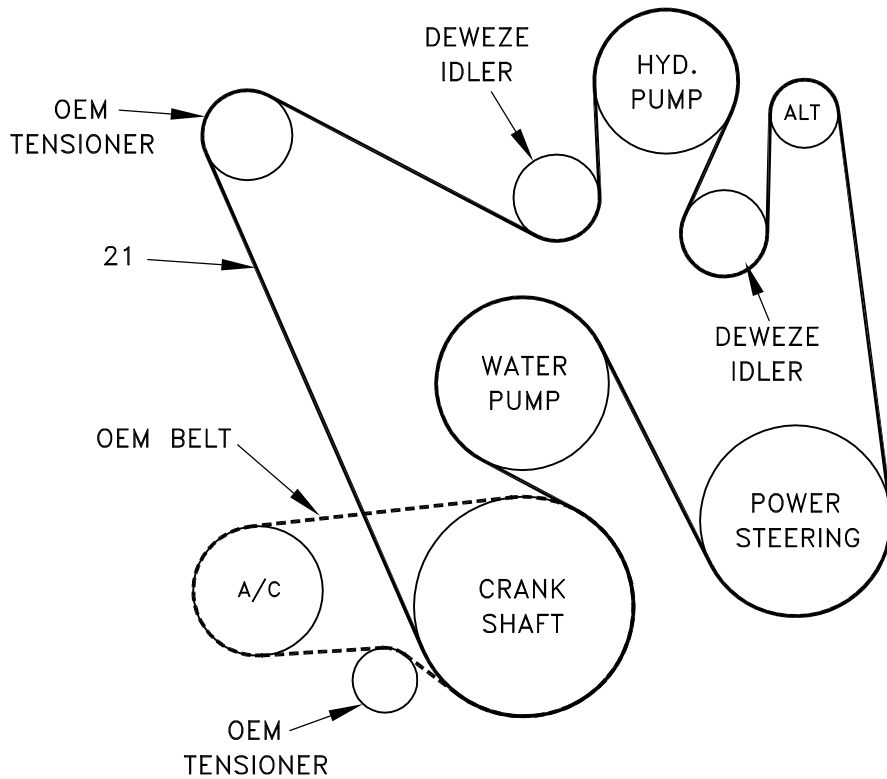
**PIVOT ALTERNATOR**

FROM ITS ORIGINAL LOCATION, PIVOT ALTERNATOR CLOCKWISE ON OEM BOLT (9, LOCATION G) SO LUG AT LOCATION B IS NOW ON TOP AS IN FIG. 1.



**FIG. 3**

**BELT DIAGRAM**



# DewEze

## Clutch Pump Kit

Clutch Pump Kit  
700403  
Chevy Van  
with 6.0L  
2003-

# INSTALLATION INSTRUCTIONS

---

1. Disconnect the battery.
2. Remove the air cleaner assembly from the engine forward.
3. Remove OEM belt.
4. Remove the OEM idler from the alternator bracket at Location H.
5. Remove the alternator. Save the OEM bolts to use again. Disconnect the wires from the alternator.
6. Bend the bracket over that holds the throttle and cruise cables (See Fig. 2). This is to allow clearance for the alternator relocation. Remove the bottom bolt (20) on the throttle/cruise cable bracket. Place the Adel clamp (19) around the power steering hose and attach it to the throttle bracket with the OEM bolt that was just removed. This will hold the hose out of the belt line.
7. The ear on the alternator bracket (Fig. 2, Location G) will need to be cut or ground off to clear the rotated alternator. The top edge of the bracket needs to be ground down for clearance also as in Fig. 2. Set the alternator in its original location (G) with the OEM bolt (9): see Fig. 4. Pivot the alternator clockwise so the lug at Location B is now on top as in Fig. 1. Make sure enough of the bracket is ground away so that it pivots around far enough to bolt in place properly.
8. Insert the DewEze vertical bracket (1) between the lugs of the OEM alternator bracket (Location B). Thread the OEM bolt (10) into that bracket and tighten. Then remove that bolt and the vertical bracket. Grind the outside of the steel bushing down almost flush to the casting. This is to give clearance between the bolt and the belt.
9. The alternator wires need to be re-routed to reach the alternator in its new location. Pull the molded plug wire out of the wiring bundle enough to reach the alternator. The big wire can be run under the air intake to the alternator. Install the alternator with the OEM bolt (9) at Location G as shown. Do not tighten.
10. Install the idler bracket (15) to the front of the OEM alternator bracket with the M10 x 120 bolt (13) at Location D and the M10 x 130 bolt (14) at Location E. Mount one idler (17) in the top hole at Location F with an M10 x 40 bolt (7) and 3/8 flat washer (12), inserting an idler bushing (16) in the back of the idler. Mount the other idler (17) where the OEM idler was at Location H using the OEM bolt (7) and 3/8 flat washer (12).
11. Mount the alternator bracket (3) to the pump plate (2) with the three 3/8 x 2 socket head bolts (18). Attach the vertical bracket (1) to the pump plate with three 3/8 x 1 1/4 socket head bolts (6). Mount the pump onto the pump plate with the 3/8 x 1 1/4 bolts (11) and the 3/8 flat washers (12).
12. Mount the clutch coil (5a) to the pump bracket with four 1/4 x 1/2 flange bolts (5b). Mount the clutch pulley (5c) to the pump shaft with the 5/16 x 1 1/4 bolt (5d) and heavy flat washer (5e) making sure the key is in place on the shaft.
13. Install the fittings onto the pump. Set the bracket and pump to where the suction and pressure hoses can be connected before bolting in place.
14. Install the pump plate with pump using the OEM alternator bolt (10) at Location B and the M10 x 70 bolt (8) attaching the top of the alternator to the pump plate at Location C. Tighten all bolts.
15. Install the belt (21) as shown in the diagram (Fig. 3).
16. Run the engine and check for any clearance or alignment problems. Adjust as needed.