

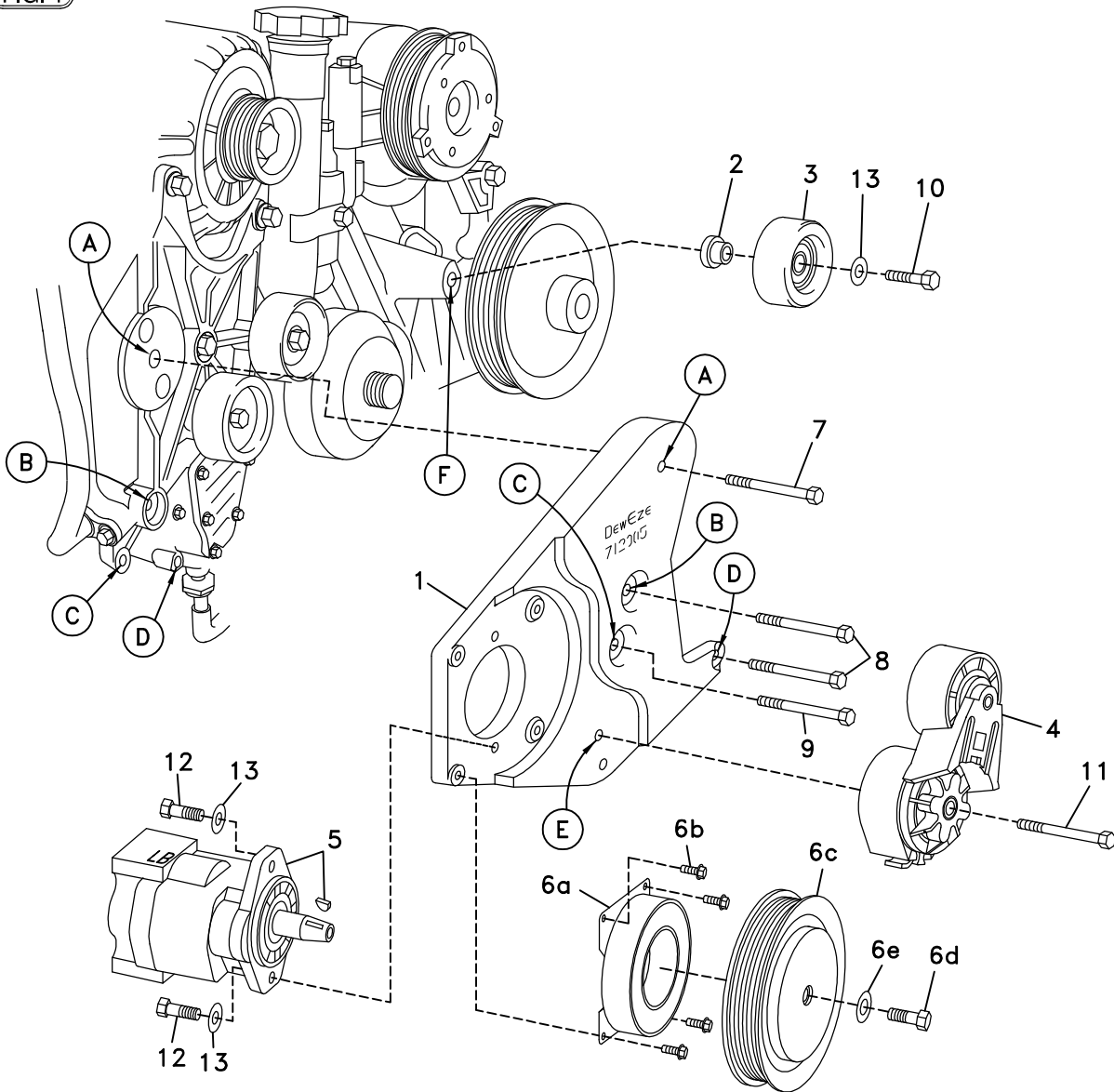
Bracket Assy.	None
Bolt Packages:	
Bracket	711426 (Inc. items 7 - 9)
Pulley	None
Idler	711427 (Inc. items 2, 10, 13)
Tensioner	None

Make	Chevrolet 4500, 5500
Engine	6.6L
Fuel	Diesel
Year	2002-
Equipment	Turbo, A/C
	Single alternator
Revised	D 6-19-03

Item	Part No.	Description
1.	711425	Pump mount bracket
2.	711338	Bushing / idler
3.	740350	Idler pulley
4.	743003	Tensioner
5.	*	Pump / rear port
6.	740144	Clutch
7.	110488	M10 x 45 x 1.5 Bolt
8.	110113	M10 x 90 x 1.5 Bolt
9.	110559	M8 x 40 x 1.25 Bolt
10.	110526	M10 x 40 x 1.5 Bolt
11.	110567	M10 x 80 x 1.5 Bolt
12.	110425	3/8-16 x 1 1/4 Bolt
13.	110676	3/8 Flat washer
14.	740359	Belt / 6 rib

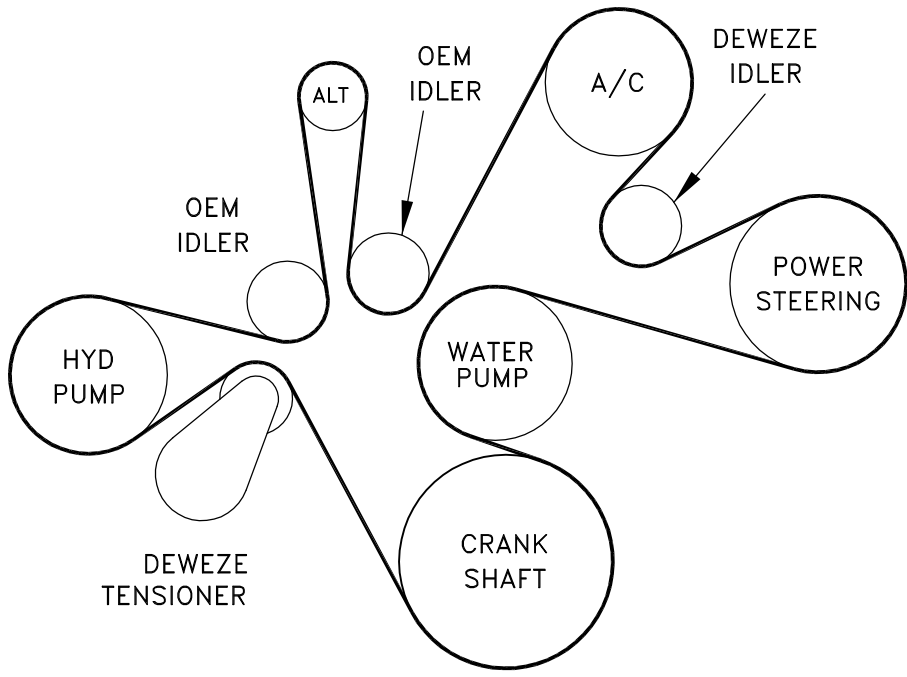
* MAXIMUM 9 GPM PUMP. SEE MASTER LIST FOR PART NUMBER.

FIG. 1



(A),(B),(C)... Denotes bolt holes in engine to locate corresponding holes in Pump Brkt.

FIG. 2
BELT DIAGRAM



DewEze

Clutch Pump Kit

Clutch Pump Kit
700397
CHEVY
6.6L
'A' mount
2002-

INSTALLATION INSTRUCTIONS

1. Disconnect the battery.
2. Remove the OEM tensioner.
3. Remove the OEM bolts from Locations B and D. Remove the OEM bolt and clamp from Location C. Push the wiring cable back out of the way so it will clear the bracket when it is bolted on.
4. Bolt pump (5) to pump plate (1) with two 3/8 x 1 1/4 bolts (12) and two 3/8 flat washers (13).
5. Mount the bracket and pump to the engine using the M10 x 45 bolt (7) at Location A, two M10 x 90 bolts (8) at Locations B and D, and the M8 x 40 bolt (9) at Location C.
6. Mount the DewEze tensioner (4) at Location E using the M10 x 80 bolt (11).
7. Mount the clutch coil (6a) to the pump bracket with four 1/4 x 1/2 flange bolts (6b). Mount the clutch pulley (6c) to the pump shaft with the 5/16 x 1 1/4 bolt (6d) and heavy flat washer (6e) making sure the key is in place on the shaft.
8. Insert the idler bushing (2) into the back of the idler pulley (3), and mount the pulley to the boss at Location F using the M10 x 40 bolt (10) and flat washer (13).
9. Install the belt (14) as shown in the diagram (Fig. 2).
10. Run the engine and check for any clearance or alignment problems. Adjust as needed.