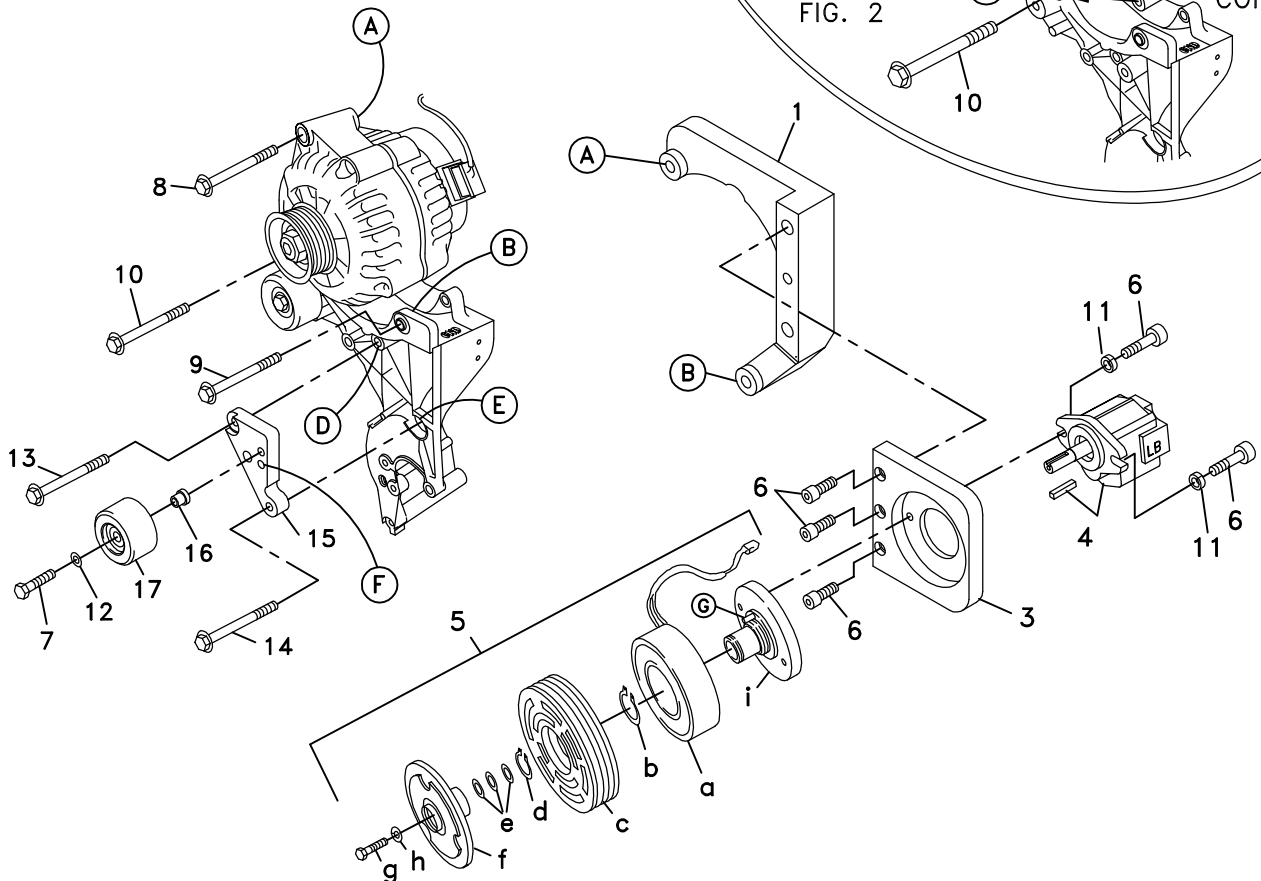


711369	Bracket Assy. (Inc. items 1, 2, 3, 15)		Kit No.	<b>700384</b>
711356	Bracket Bolt Pkg. (Inc. items 6, 8)		Make	Chevrolet/GMC
None	Pulley Bolt Pkg.		Engine	6.0L
711368	Idler Bolt Pkg. (Inc. items 7, 12, 16)		Fuel	Gas
711370	Idler Brkt. Bolt Pkg. (Inc. items 13, 14)		Year	2001
None	Fan Spacer Bolt Pkg.		Equipment	
			Revised	B 11-19-01

ITEM	PART #	DESCRIPTION			
1.	711399	Engine bracket	10.	OEM	Bolt
2.	-----	-----	11.	110271	3/8 Lock washer, .55 O.D. x .13 thick
3.	711291	Pump plate	12.	110676	3/8 Flat washer
4.	*	Pump	13.	110215	M10 x 120 x 1.5 Bolt
5.	740162	Clutch	14.	110181	M10 x 130 x 1.5 Bolt
6.	110465	3/8-16 x 1 1/4 Socket head bolt	15.	711365	Idler bracket
7.	110526	M10 x 40 x 1.5 Bolt	16.	711366	Idler bushing
8.	110217	M10 x 70 x 1.5 Bolt	17.	740350	Idler
9.	OEM	Bolt	18.	740336	Belt/5061223

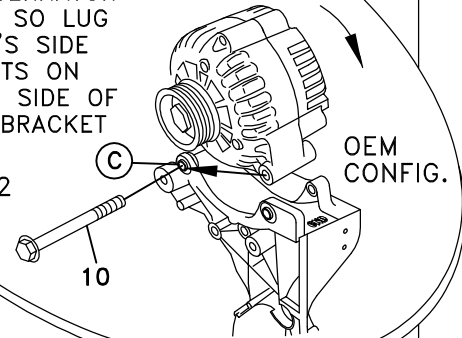
\* See master list for pump part no.

FIG. 1



ROTATE ALTERNATOR  
CLOCKWISE SO LUG  
ON DRIVER'S SIDE  
NOW MOUNTS ON  
PASSENGER SIDE OF  
MOUNTING BRACKET

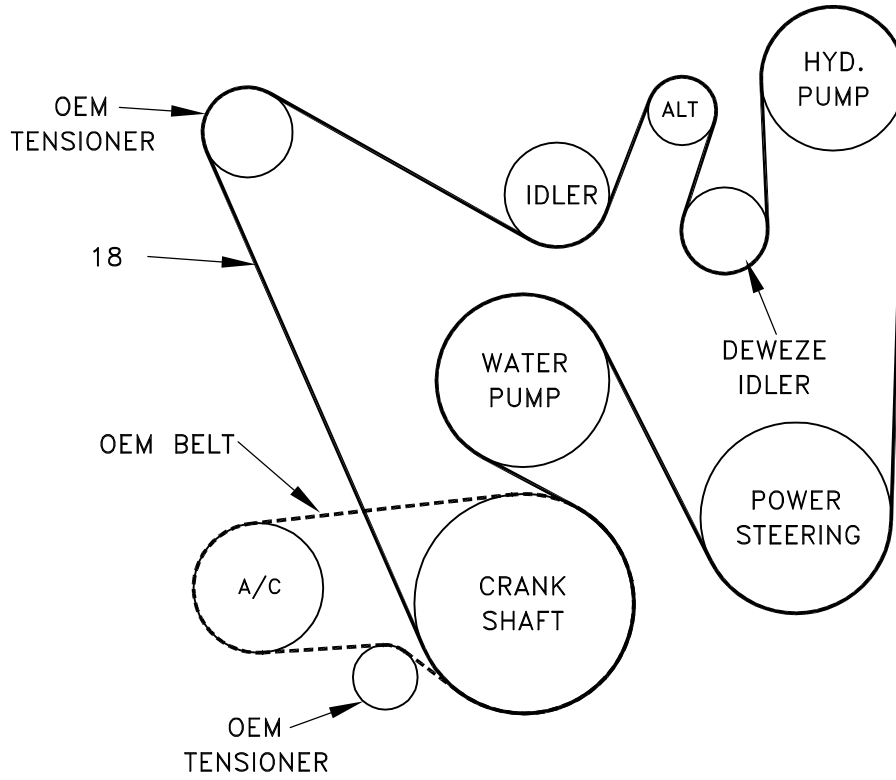
FIG. 2



(A),(B),(C)... Denotes bolt holes in engine to locate corresponding holes in Pump Brkt.

FIG. 3

BELT DIAGRAM



# DewEze

Clutch Pump Kit  
#700384  
Chevy 6.0L  
with A/C  
'AA' mount  
2001-

## INSTALLATION INSTRUCTIONS

1. Disconnect the battery.
2. Unbolt the alternator. Rotate it clockwise so the alternator lug that was on the driver's side of the mounting bracket is now on the passenger side of the mounting bracket. See Fig. 2. Thread the OEM bolt (10) that was originally in that hole back into the same location to mount the alternator. Do not tighten it yet.
3. Attach the pump plate (3) to the engine bracket (1) with three 3/8 x 1 1/4 socket head bolts (6).
4. Hold pump (4) onto back of mounting plate (3) and clutch hub (5i) onto front of mounting plate, making sure clutch wire and anti-rotation pin (G) on front of hub is on the top. Place two 3/8 x 1 1/4 socket head bolts (6), 3/8 lock washers (11) through pump, through mounting plate and thread into hub.
5. Slide coil (5a) over hub, aligning hole in the back plate of coil with the anti-rotation pin (G) in the hub. The wires from the coil should be on the same side as the pin (G). Install large snap ring (5b) to hold coil in place.  
**NOTE: THE BEVEL ON BOTH SNAP RINGS MUST FACE AWAY FROM THE PUMP. REFER TO INSTRUCTION SHEET FOR THE CLUTCH FOR CORRECT INSTALLATION OF SNAP RINGS.**
6. Slide clutch pulley (5c) onto hub. Install small snap ring (5d) to hold pulley in place.
7. Place the key (4) onto the pump shaft. Slide the hub/armature (5f) onto the pump shaft aligning the keyways.  
**NOTE: SET THE AIR GAP BETWEEN THE HUB/ARMATURE AND THE PULLEY USING SHIMS (5e) ACCORDING TO INSTRUCTION SHEET FOR CLUTCH.**
8. Thread bolt (5g) and lock washer (5h) into pump shaft. Torque to value in clutch instruction sheet.
9. Insert the lower bracket between the lugs on the alternator bracket at location B with the OEM bolt (9) taken from this location. Insert the M10 x 70 bolt (8) into the top hole in the alternator and thread into the DewEze bracket at location A. Tighten these bolts and the OEM bolt at location C.
10. Remove OEM bolts at locations D and E and discard. Insert the idler bushing (16) into the back of the idler pulley (17). Insert the M10 x 40 bolt (7) through the 3/8 flat washer (12), through the front of the idler pulley with bushing and into the bottom threaded hole at location F in the idler bracket (15). Attach the idler bracket to the alternator bracket with the M10 x 120 bolt (13) at location D and the M10 x 125 bolt (14) at location E.
11. Install the belt (18).
12. Connect the battery.
13. Run the engine and check for any clearance or alignment problems. Adjust as needed.