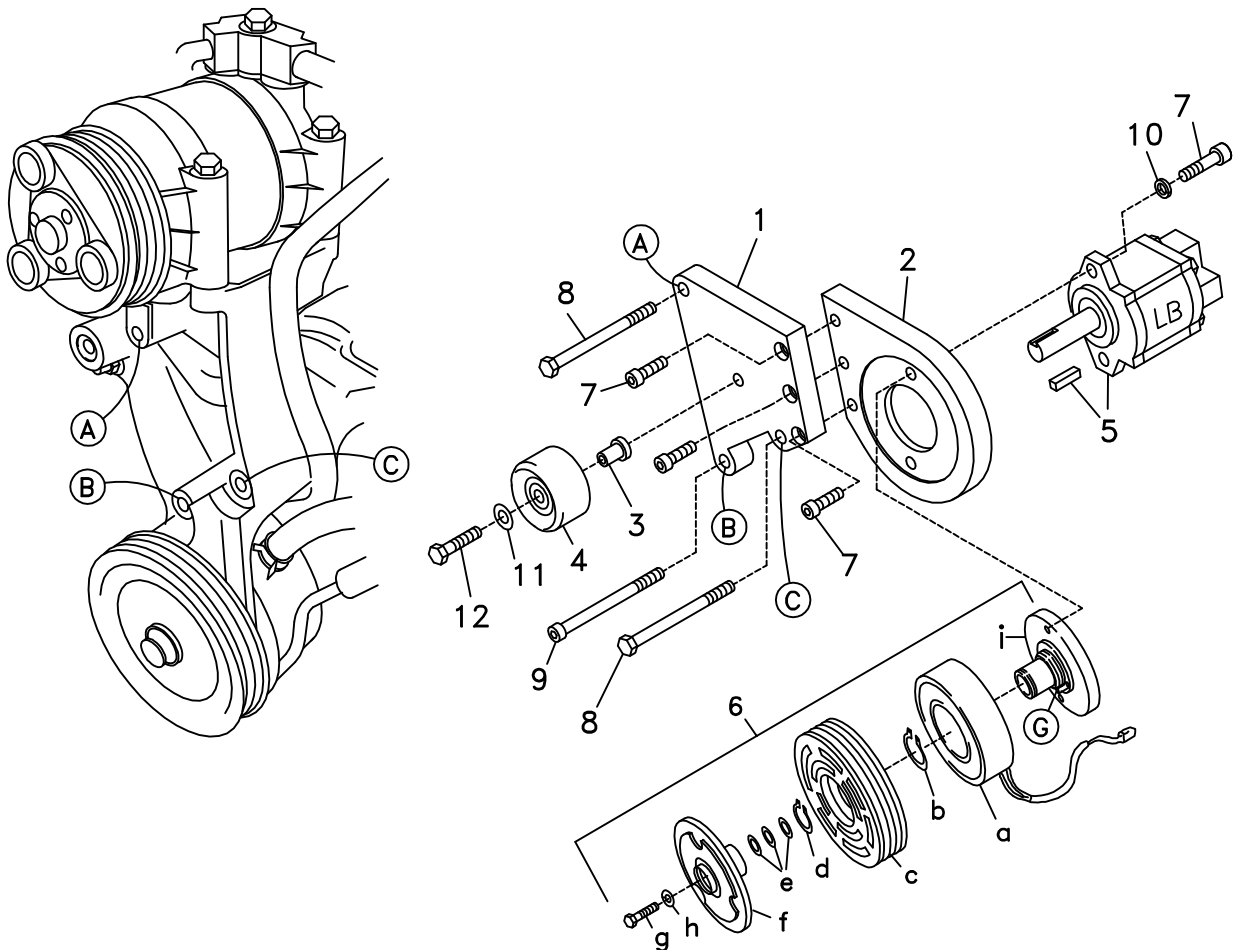


711359	Bracket Assy. (Inc. item 1, 2)		Kit No.	700380
711362	Bracket Bolt Pkg. (Inc. items 7, 8, 9)		Make	Chevy Van
None	Pulley Bolt Pkg.		Engine	8.1L
711340	Idler Bolt Pkg. (Inc. items 3, 11, 12)		Fuel	Gas
None	Fan Spacer Bolt Pkg.		Year	2001
			Options	With A/C
			Revised	NC 3-20-01

ITEM	PART #	DESCRIPTION
1.	711360	Engine bracket
2.	711361	Pump plate
3.	711338	Idler bushing
4.	740294	Idler pulley
5.	*	Pump
6.	740162	Clutch
7.	110465	3/8-16 x 1 1/4 Skt. hd. bolt
8.	110274	M10 x 140 x 1.5 Bolt
9.	110275	M10 x 140 x 1.5 Skt. hd. bolt
10.	110271	3/8 Lock washer, .55 O.D. x .13 Thick
11.	110672	3/8 Flat washer
12.	110488	M10 x 45 x 1.5 Bolt
13.	740346	Belt/Dayco 5061150

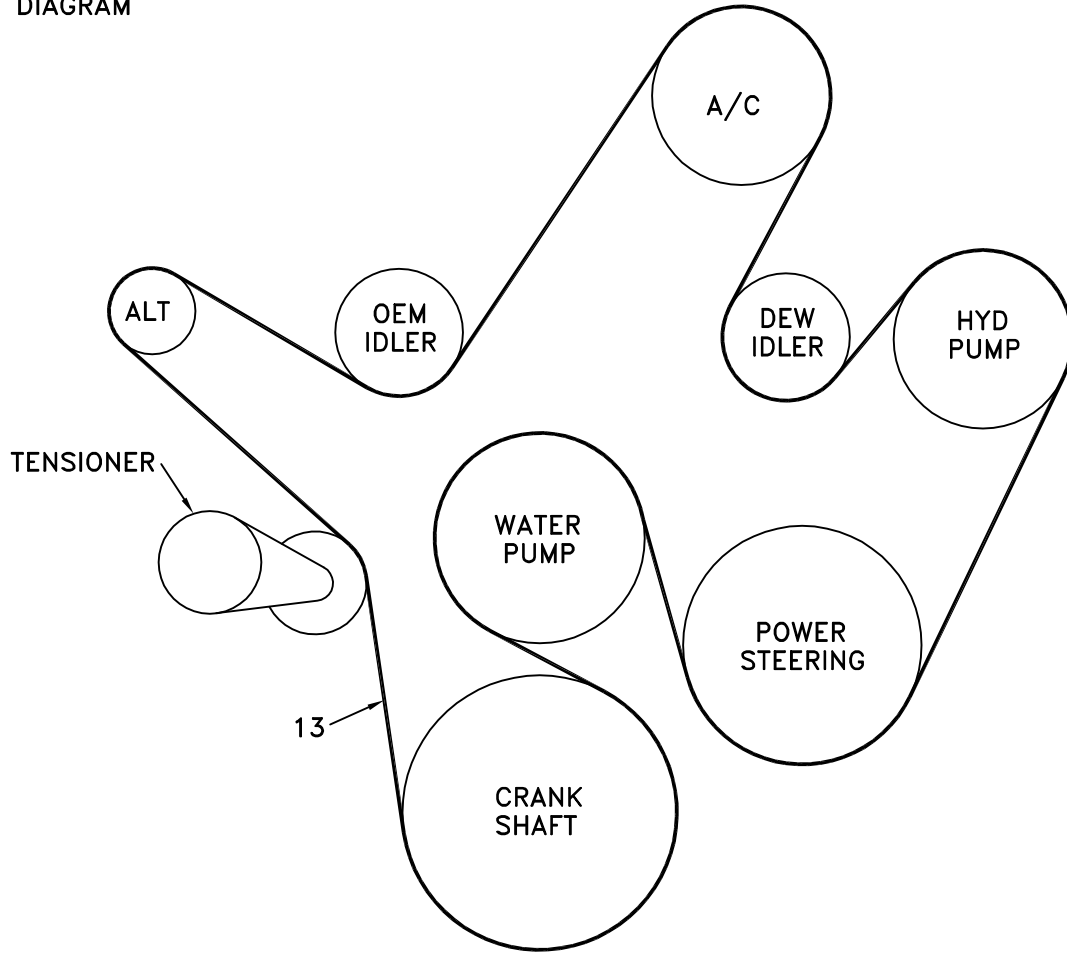
* The only pumps available for this kit are 'AA' mount. See master list for pump part number.

FIG. 1



(A) Denotes bolt holes in engine to locate corresponding holes in Pump Brkt.

FIG. 2
BELT DIAGRAM



DewEze

Clutch Pump Kit
#700380
Chevy 8.1L
with A/C
'AA' mount
2001-

I N S T A L L A T I O N I N S T R U C T I O N S

1. Disconnect the battery.
2. Remove the OEM belt.
3. Attach the pump plate (2) to the engine bracket (1) with three 3/8 x 1 1/4 socket head bolts (7).
4. Hold pump (5) onto back of pump plate (2) and clutch hub (6i) onto front of bracket, making sure anti-rotation pin (G) on front of hub is on top. Place two 3/8 x 1 1/4 socket head bolts (7) and 3/8 lock washers (10) through pump, through mounting plate and thread into hub. Torque to 20 ft-lb.
5. Slide coil (6a) over hub, aligning hole in the back plate of coil with the anti-rotation pin (G) in the hub. The wires from the coil should be on the same side as the pin (G). Install large snap ring (6b) to hold coil in place.
NOTE: THE BEVEL ON BOTH SNAP RINGS MUST FACE AWAY FROM THE PUMP. REFER TO INSTRUCTION SHEET FOR THE CLUTCH FOR CORRECT INSTALLATION OF SNAP RINGS.
6. Slide clutch pulley (6c) onto hub. Install small snap ring (6d) to hold pulley in place.
7. Place the key (5) onto the pump shaft. Slide the hub/armature (6f) onto the pump shaft aligning the keyways.
NOTE: SET THE AIR GAP BETWEEN THE HUB/ARMATURE AND THE PULLEY USING SHIMS (6e) ACCORDING TO INSTRUCTION SHEET FOR CLUTCH.
8. Thread bolt (6g) and lock washer (6h) into pump shaft. Torque to value in clutch instruction sheet.
9. Insert the idler bushing (3) into the back side of the idler pulley (4). Insert the M10 x 45 bolt (12) with the 3/8 flat washer (11) into the front of the idler. Mount the idler to the bracket at location D.
10. Install the 90° fittings on the back of the pump and connect the suction and pressure hoses to the fittings as the rear of the pump is inaccessible after it is installed on the engine.
11. Install the bracket with pump onto the engine with the M10 x 140 bolts (8) at locations A and C and the M10 x 140 socket head bolt (9) at location B.
12. Install the belt (13).
13. Connect the battery.
14. Run the engine and check for any clearance or alignment problems. Adjust as needed.