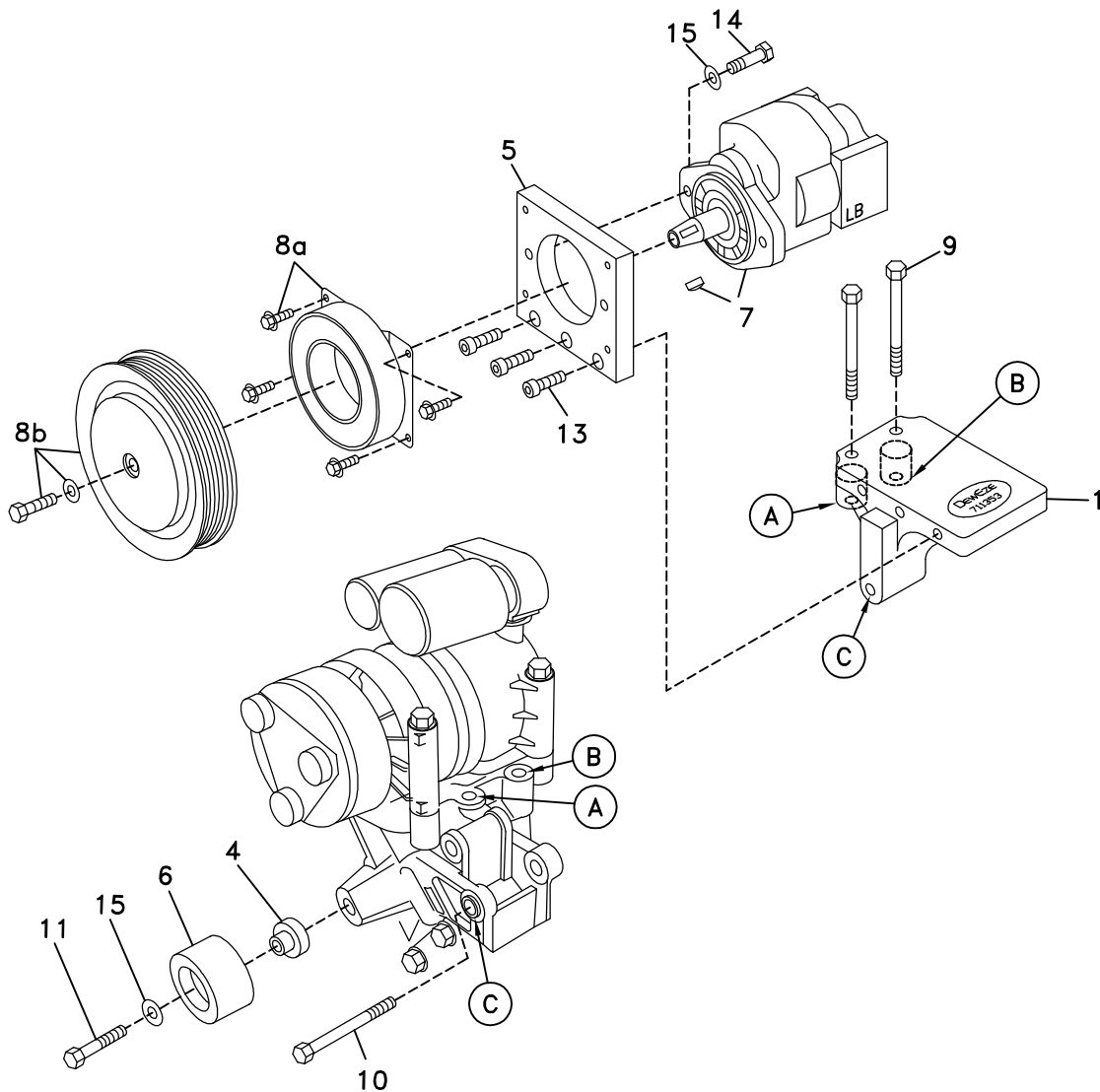


710099	Bracket Assy. (Inc. item 1)		Kit No.	700374
711339	Bracket Bolt Pkg. (Inc. items 9, 10, 13)		Make	Chevrolet/GMC
None	Pulley Bolt Pkg.		Engine	6.6L
711340	Idler Bolt Pkg. (Inc. 4, 11, 15)		Fuel	Diesel
			Year	2000-01
			Equipment	Turbo, A/C
			Revised	B 9-5-01

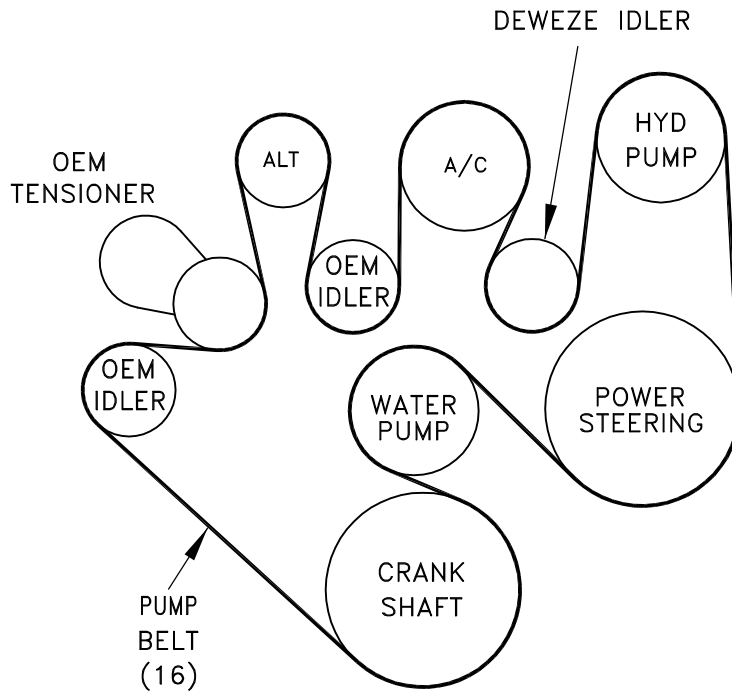
ITEM	PART #	DESCRIPTION				
1.	710099	Pump mount bracket	9.	110217	M10 x 70 x 1.5 Bolt	
2.	-----	-----	10.	110567	M10 x 80 x 1.5 Bolt	
3.	-----	-----	11.	110488	M10 x 45 x 1.5 Bolt	
4.	711338	Idler bushing	12.	-----	-----	
5.	710936	Pump plate	13.	110395	3/8-16 x 1 Socket head bolt	
6.	740249	Idler pulley	14.	110425	3/8-16 x 1 1/4 Bolt	
7.	*	Pump / Rear port	15.	110676	3/8 Flat washer	
8.	740144	Clutch	16.	740266	Belt/6 Rib	

FIG. 1



(A)(B)(C)... Denotes bolt holes in engine to locate corresponding holes in Pump Brkt.

FIG. 2
BELT DIAGRAM



DewEze

Clutch Pump Kit
#700374
CHEVROLET
6.6L
DURAMAX
'A' mount
00-01

INSTALLATION INSTRUCTIONS

1. Disconnect the battery.
2. Bolt the pump plate (5) to the base plate (1) with three 3/8 x 1 socket head bolts (13). Torque to 20 ft-lb.
3. Insert the two M10 x 70 bolts (9) through the holes in the notched end of the base plate (1) and into the air conditioner mounting bracket at locations A and B. Torque to 25 ft-lb. Insert the M10 x 80 bolt (10) into the air conditioner bracket at location C and through the engine bracket (2) and thread into the rear of the air conditioner bracket. Torque to 25 ft-lb.
4. Push the idler bushing (4) into the back (the side without the snap ring) of the idler pulley (6). Insert the M10 x 45 bolt (11) through a 3/8 flat washer (15), through the idler pulley and bushing and thread into the boss on the air conditioner bracket below the compressor. Torque to 25 ft-lb.
5. Bolt pump (7) onto pump plate (5) with two 3/8 x 1 1/4 bolts (14) and two 3/8 flat washers (15). Torque to 20 ft-lb. Attach coil (8a) with four 1/4 x 1/2 flange bolts supplied with clutch. Torque these to 6 ft-lb. Attach clutch pulley (8b) to pump shaft with 5/16NF x 1 1/4 bolt and heavy washer supplied with clutch. Torque to 14 ft-lb.
6. Install the belt (16) as shown in the belt diagram (Fig. 2). Visually sight along the edge of the belt to be sure the clutch pulley is in line with the other pulleys.
7. Connect the battery.
8. Run the engine and check for any clearance or alignment problems. Adjust as needed.