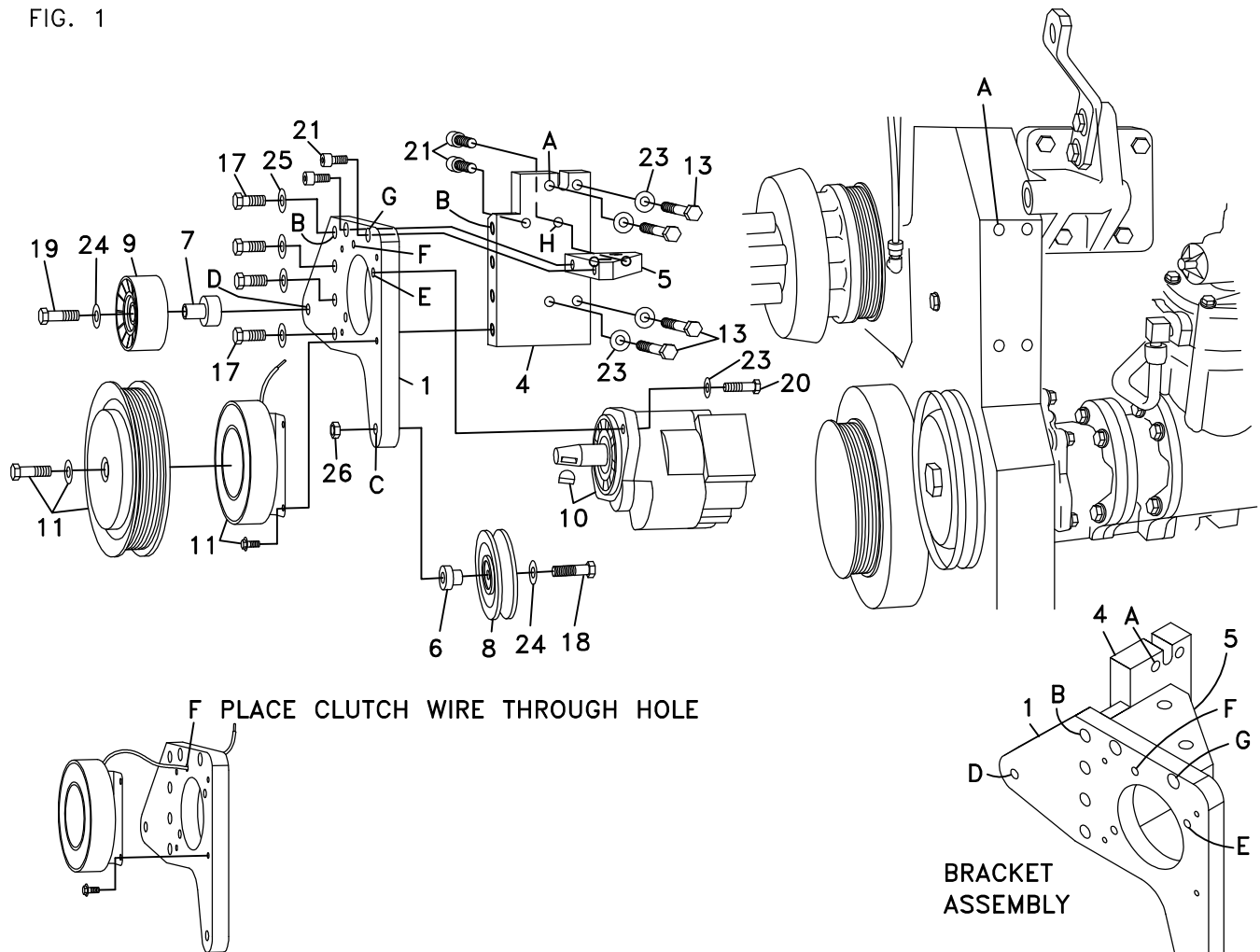


DEWEZE CLUTCH PUMP KIT

710095	Bracket Assy. (See item 1-4)		Kit No.	700347
711227	Bracket Bolt Pkg. (Inc. items 13-17, 21-23, 26)		Make	Ford
None	Pulley Bolt Pkg.		Engine	Cummins M11
711228	Idler Bolt Pkg./V-Groove		Fuel	Diesel
711229	Idler Bolt Pkg./Flat		Year	1995
None	Fan Spacer Bolt Pkg.		Equipment	w/ and w/o AC
			Revised	A 12-6-99

ITEM	PART #	DESCRIPTION
1.	711220	Pump mount plate
2.	711221	Tensioner mount plate
3.	711222	Tensioner spacer block
4.	711223	Engine plate
5.	711224	Gusset
6.	711225	Bushing/V-groove idler
7.	711226	Bushing/flat idler
8.	740041	Idler/V-groove
9.	740261	Idler/flat
10.	*	Pump
11.	740148	Clutch
12.	740255	Tensioner
13.	110210	M10 x 50 Bolt
14.	110180	M10 x 60 Bolt
15.	110217	M10 x 70 Bolt
16.	110580	M10 x 85 Bolt
17.	110417	1/2 x 1 1/2 Gr. 8 Bolt
18.	110544	7/16 x 2 Bolt
19.	110545	7/16 x 2 1/2 Bolt
20.	110425	3/8 x 1 1/4 Bolt
21.	110395	3/8 x 1 Skt hd cap scrw
22.	110244	1/2 x 1 1/2 Skt hd cap scrw
23.	110155	3/8 Flat washer
24.	110670	7/16 Flat washer
25.	110658	1/2 Flat washer
26.	110641	7/16 Nut
27.	740127	V-belt A49 (Air cond.)
28.	740280	Micro-V belt K080716 (Pump)

FIG. 1



(A)(B)(C)... Denotes bolt holes in engine to locate corresponding holes in Pump Brkt.

FIG. 2

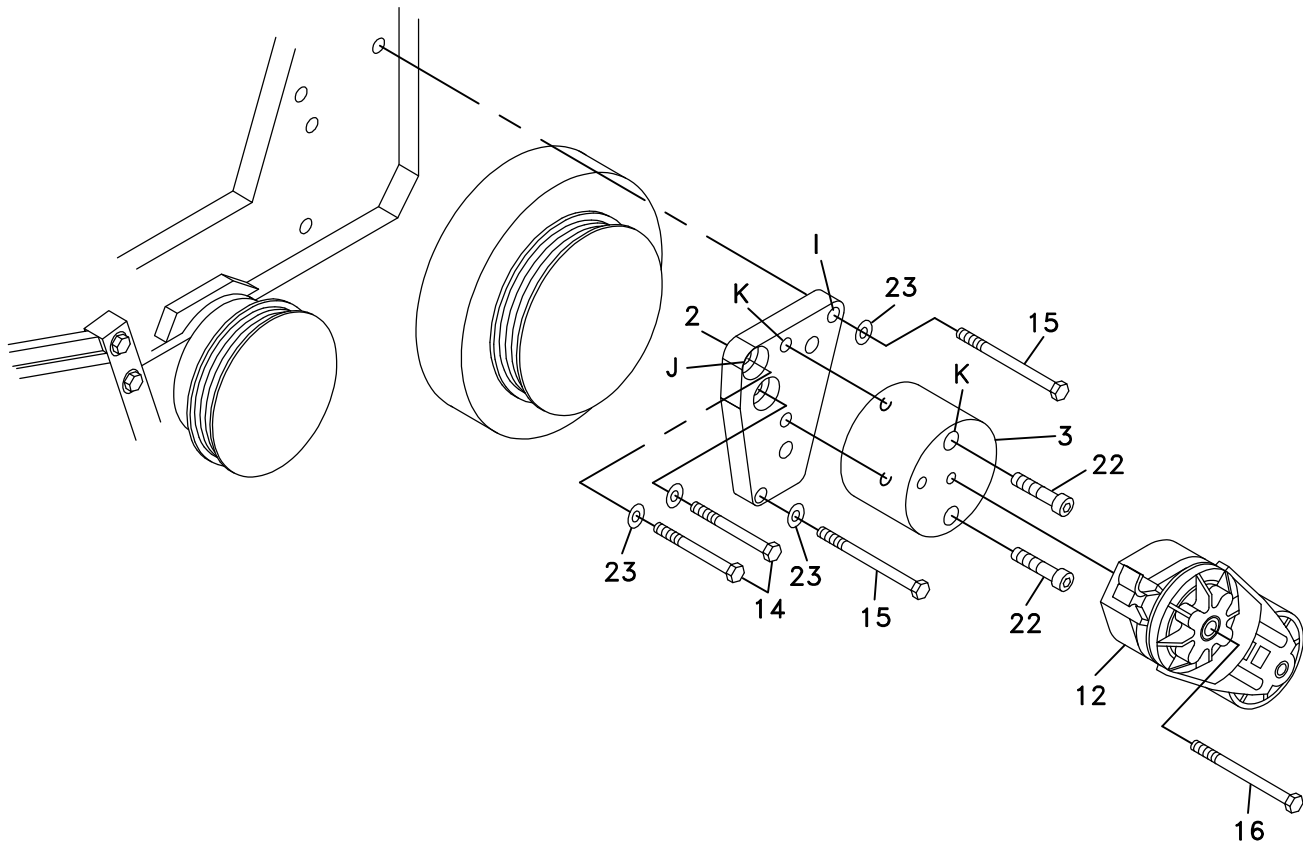
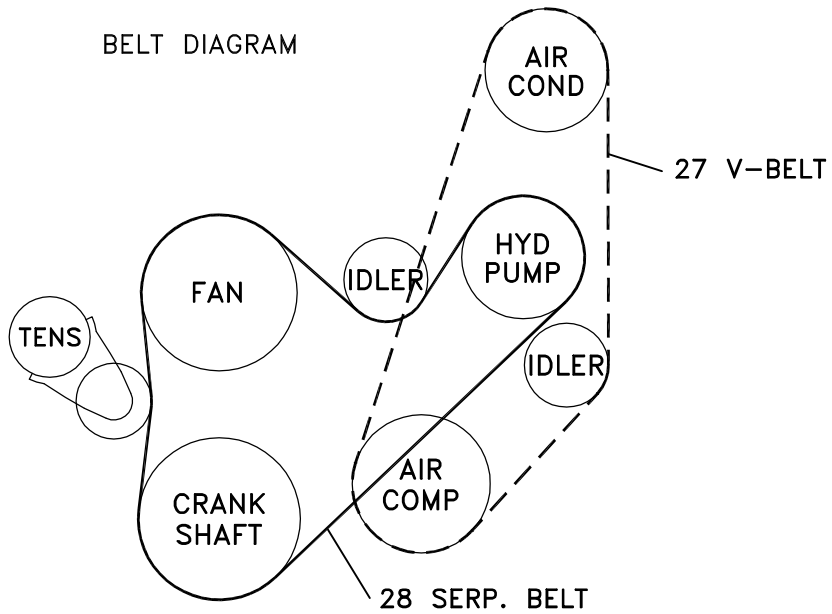


FIG. 3

BELT DIAGRAM



DewEze

Clutch Pump Kit
#700347
Ford Aeromax
with Cummins M11
w/ and w/o A/C
1995

INSTALLATION INSTRUCTIONS

NOTE: Suction hose to pump must be a wire braid hose; minimum 1" I.D. for 7 & 9 gpm pumps; 1 ¼" I.D. for 12 & 17 GPM pumps. Installations with smaller suction hoses will void the pump warranty.

1. Disconnect battery.

Refer to Fig. 1 for items 2 through 10.

2. Unbolt the air conditioner and lift it up out of the way.
3. Hold the short side of the bracket gusset (5) against the outside of the engine plate (4) at hole H. Thread two 3/8 x 1 socket head screws (21) through the opposite side of the plate into the counterbored holes and into the gusset. Bolt the plate and gusset to the engine at hole A using four 10x50 bolts (13) and four 3/8" flat washers (23).
4. Attach the pump mount plate (1) to the engine plate using four ½ x 1 ½ bolts (17) and four ½" flat washers (25) at holes B and two 3/8 x 1 socket head cap screws (21) at hole G into gusset.
5. Attach the flat idler (9) to the front of the pump plate at hole D by inserting the long shoulder bushing (7) into the center of the idler opposite the snap ring and inserting the 7/16 x 2 ½ bolt (19) and 7/16" flat washer (24) through the idler side with the snap ring and into the plate.
6. Attach the V-groove idler (8) to the rear of the pump plate at hole C by inserting the short shoulder bushing (6) into the center of the idler opposite the snap ring and inserting the 7/16 x 2 bolt (18) and 7/16" flat washer (24) through the idler side with the snap ring and into the plate.
7. Bolt the pump (10) to the rear of the pump plate using two 3/8 x 1 ¼ bolts (20) and two 3/8 flat washers (23) at holes E.
8. Attach the clutch coil (11) to the front of the pump plate using four wiz flange bolts supplied with the clutch. Insert the clutch wire through the plate at hole F.
9. Place the key into the pump shaft and slide the clutch pulley onto the shaft. Thread the bolt and heavy washer into the end of the shaft.
10. Mount the air conditioner back in its original location using the OEM bolts.

Refer to Fig. 2 for the following:

11. Attach the tensioner mount plate (2) to the front of the engine at hole I using two M10 x 70 bolts (15) and two 3/8" flat washers (23). Thread two M10x 60 bolts (14) and two 3/8" flat washers (23) into the counterbored holes at J.
12. Attach the tensioner mount block (3) to the plate by threading two ½ x 1 ½ socket head cap screws (22) into the counterbored holes at K. Attach the tensioner (12) onto the block by lining up the pin on the back of the tensioner with the hole in the block and thread the M10 x 85 bolt into the center of the tensioner base and into the block.

13. Make sure all bolts are tight.
14. Install the V-belt (27) for the air conditioner.
15. Install the serpentine belt (28) for the pump.
16. Reconnect the battery.
17. Run the engine and check for any clearance or alignment problems.