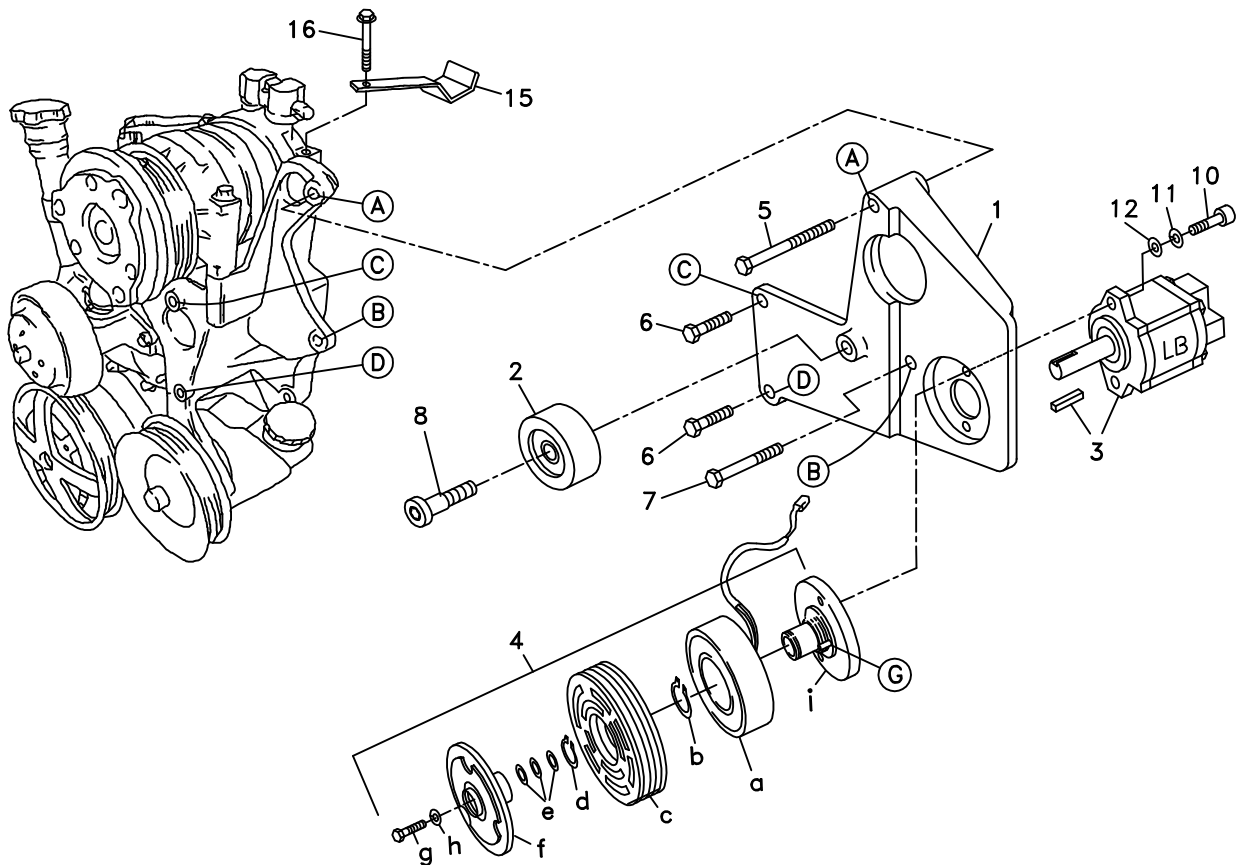


-----	Bracket Assy. (See item 1)		Kit No.	700335
711105	Bracket Bolt Pkg. (Inc. items 5-7, 9, 17, 18)		Make	Chevy
None	Pulley Bolt Pkg.		Engine	6.5L
None	Idler Bolt Pkg.		Fuel	Diesel
None	Fan Spacer Bolt Pkg.		Year	1997
			Equipment	Turbo
			Revised	A   1-7-99

ITEM	PART #	DESCRIPTION
1.	711187	Pump mount bracket
2.	740151	Idler pulley/3.00" O.D., .668" I.D.
3.	*	Pump
4.	740162	Clutch/6-groove serp.
5.	110113	M10 x 90 x 1.5 Bolt
6.	110479	M10 x 30 x 1.5 Bolt
7.	110217	M10 x 70 x 1.5 Bolt
8.	110213	M10 Torx head shoulder bolt
9.	-----	-----
10.	110465	3/8NC x 1 1/4 Skt. hd. bolt
11.	110672	3/8 Lock washer
12.	110676	3/8 Flat washer
13.	-----	-----
14.	740209	Belt/Micro-V K061130
15.	711001	Hose holder
16.	OEM	Bolt
17.	110080	M8 X 35 X 1.25 Bolt
18.	711207	Spacer/.625" Long

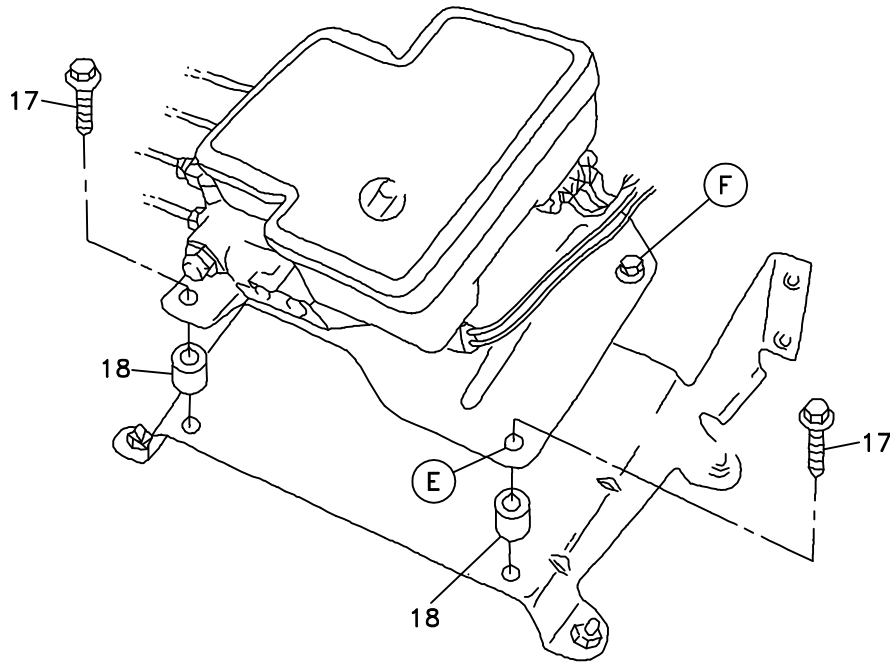
\* See master list for pump part no.

FIG. 1



(A)(B)(C)... Denotes bolt holes in engine to locate corresponding holes in Pump Brkt.

FIG. 2



BELT DIAGRAM

FIG. 3



# DewEze

Clutch Pump Kit  
#700335  
Chevy 6.5L  
1997-98

## INSTALLATION INSTRUCTIONS

**NOTE: Suction hose to pump must be a wire braid hose; minimum 1" I.D. for 7 & 9 GPM pumps, 1 1/4" I.D. for 12 & 17 GPM pumps. Installations with smaller suction hoses will void the pump warranty.**

**Refer to Fig. 2 for the following:**

1. Locate ABS control module on inner fender on driver's side. Remove two OEM bolts from engine side of ABS control module (location E). These bolts will not be used again. Loosen two bolts at outer side of ABS module (location F).
2. Place .625" spacer (18) between ABS module mounting plate and the fender bracket at location E. Thread M8 x 35 bolt (17) through plate and into fender bracket. Tighten all bolts.

**Refer to Fig. 1 for the following:**

3. Disconnect battery.
4. Mount pump bracket (1) to air conditioner/power steering bracket using an M10 x 90 metric bolt (5) at Location A, an M10 x 70 metric bolt (7) at Location B, and M10 x 30 metric bolts (6) at Locations C and D.
5. Mount idler pulley (2) to mounting boss on pump bracket with M10 Torx head shoulder bolt (8).
6. Hold pump (3) onto back of pump bracket (1) and clutch hub (4i) onto front of mounting plate, making sure anti-rotation pin (G) on front of hub is on the side that will be away from the engine. Place two 3/8 x 1 1/4 bolts (10), 3/8 lock washers (11), and 3/8 flat washers (12) through pump, through pump bracket and thread into hub.
7. Slide coil (4a) over hub, aligning hole in the back plate of coil with the anti-rotation pin (G) in the hub. The wires from the coil should be on the same side as the pin (G). Install large snap ring (4b) to hold coil in place.  
**NOTE: THE BEVEL ON BOTH SNAP RINGS MUST FACE AWAY FROM THE PUMP. REFER TO INSTRUCTION SHEET FOR THE CLUTCH FOR CORRECT INSTALLATION OF SNAP RINGS.**
8. Slide clutch pulley (4c) onto hub. Install small snap ring (4d) to hold pulley in place.
9. Place the key onto the pump shaft. Slide the hub/armature (4f) onto the pump shaft aligning the keyways.  
**NOTE: SET THE AIR GAP BETWEEN THE HUB/ARMATURE AND THE PULLEY USING SHIMS (4e) ACCORDING TO INSTRUCTION SHEET FOR CLUTCH.**
10. Thread bolt (4g) and lock washer (4h) into pump shaft. Torque to value in clutch instruction sheet.
11. Put on the belt (14) as shown in Fig. 3.
12. Connect battery.
13. Run the engine and check for any clearance or alignment problems. Adjust as needed.