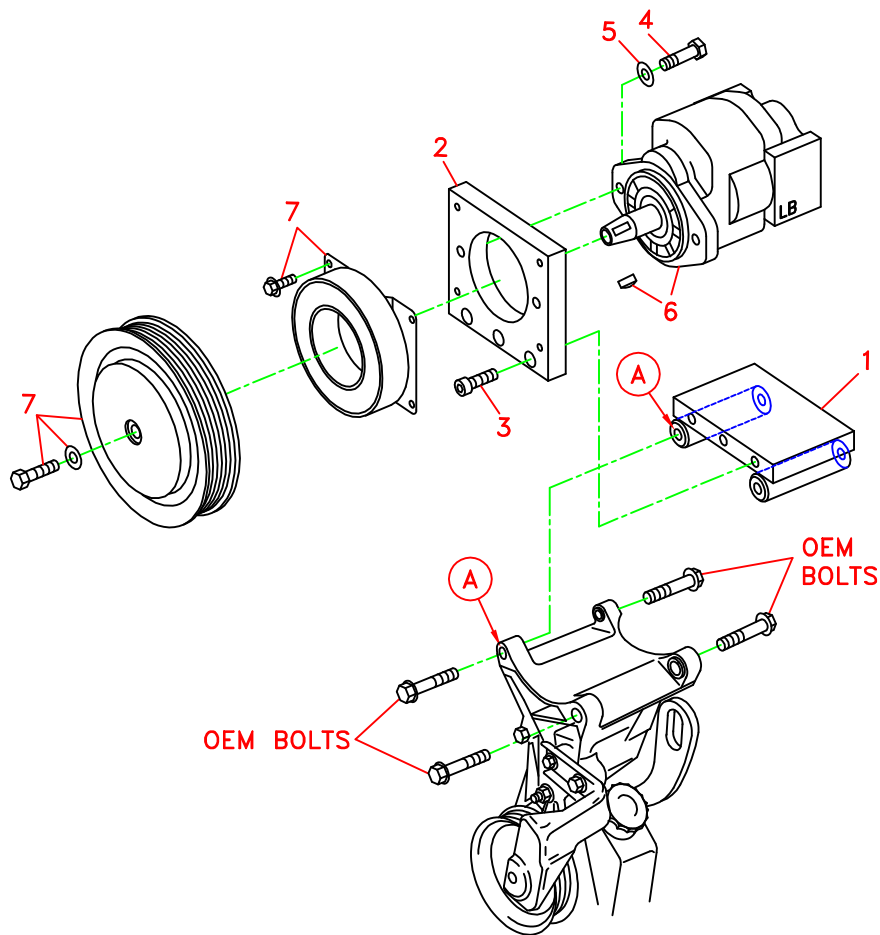


710084	Bracket Assy. (Inc. items 1, 2)		Kit No.	700328
711145	Bracket Bolt Pkg. (Inc. item 3)		Make	Isuzu/GMC
None	Pulley Bolt Pkg.		Engine	350 (5.7L)
None	Idler Bolt Pkg.		Fuel	Gas
None	Fan Spacer Bolt Pkg.		Year	1997
			Equipment	w/o A/C
			Revised	NC 12-3-97

ITEM	PART #	DESCRIPTION
1.	711141	Base plate
2.	710936	Pump mount plate
3.	110395	3/8NC x 1 Skt hd bolt
4.	110425	3/8NC x 1 1/4 Bolt
5.	110672	3/8 Lock washer
6.	*	Pump
7.	740144	Clutch, serpentine
8.	740227	Belt/Micro-V K061025

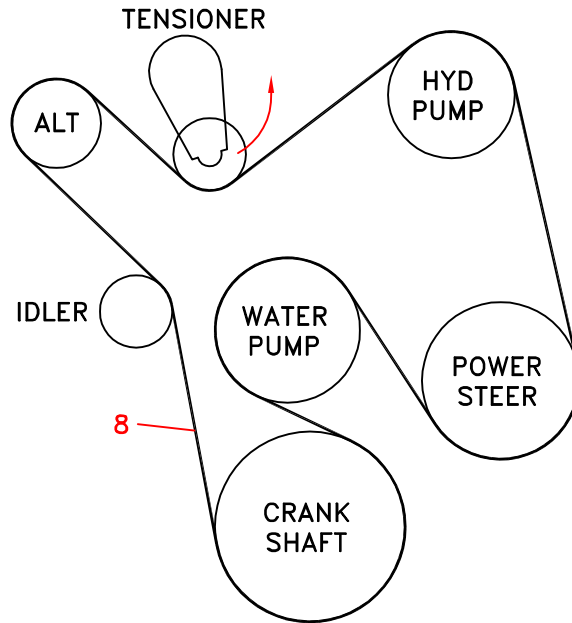
FIG. 1



(A)(B)(C)... Denotes bolt holes in engine to locate corresponding holes in Pump Brkt.

FIG. 2

BELT DIAGRAM



DewEze

Clutch Pump Kit
#700328
Isuzu/GMC
350 (5.7L)
Without A/C
1997

INSTALLATION INSTRUCTIONS

NOTE: Suction hose to pump must be a wire braid hose; minimum 1" I.D. for 7 & 9 gpm pumps; 1 ¼" I.D. for 12 & 17 gpm pumps. Installations with smaller suction hoses will void the pump warranty.

1. Disconnect battery.
2. Remove OEM belt.
3. Remove OEM idler and bracket from top of air conditioning bracket by removing four bolts, two in front and two behind. Save these bolts.
4. Mount base plate (1) onto top of air conditioning bracket using the four OEM bolts. The three holes in edge of plate face forward. Tighten the two front bolts first, then tighten the rear bolts.
5. Mount pump plate (2) onto front of base plate (1) using three 3/8 x 1 socket head bolts (3).
6. Mount pump on pump plate using two 3/8 x 1 ¼ bolts (3).
7. Mount clutch coil (7) using four wiz flange bolts provided with clutch. Mount clutch pulley using bolt and heavy flat washer provided with clutch.
8. Install belt (8).
9. Reconnect the battery.
10. Run the engine and check for any clearance or alignment problems. Adjust as needed.

□