

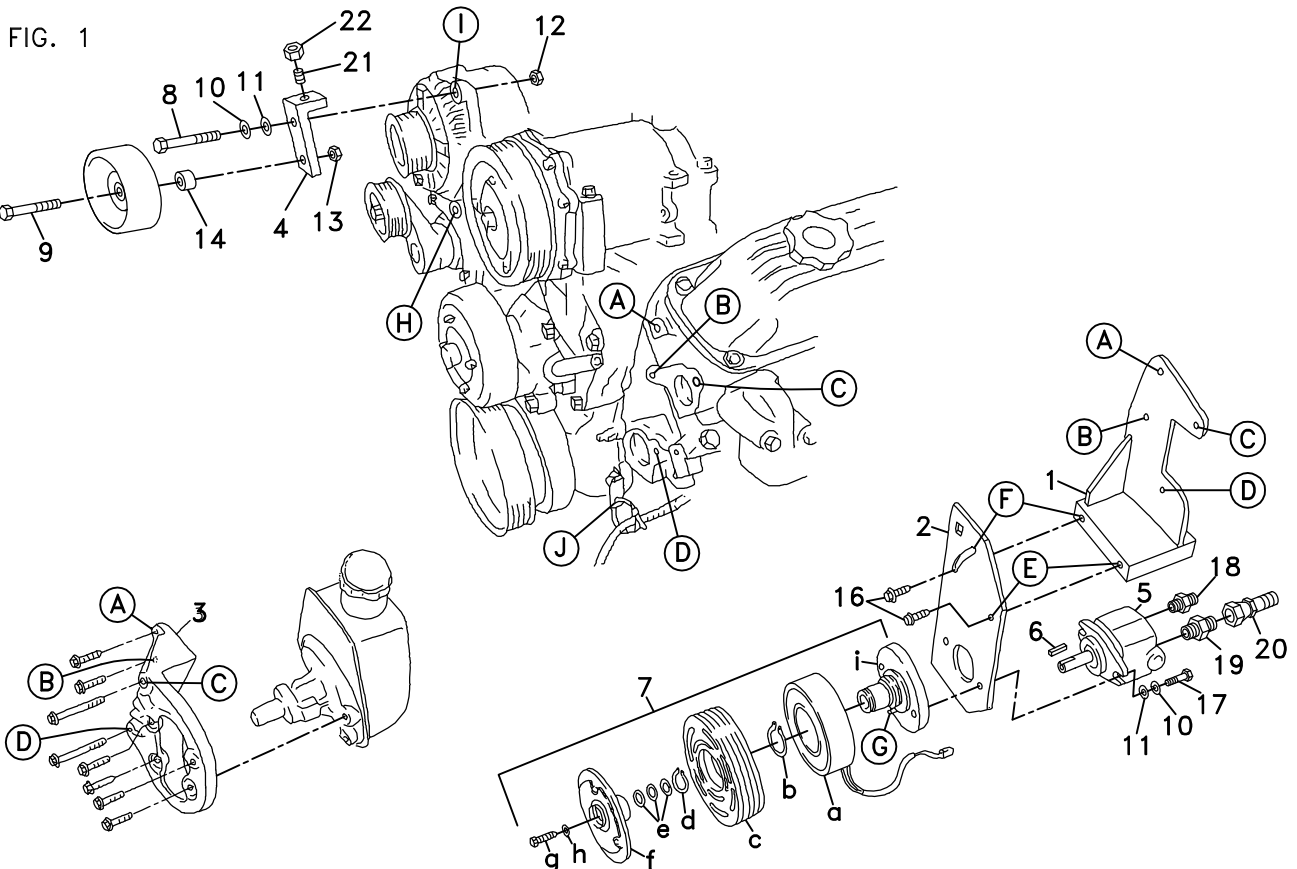
# DewEze CLUTCH PUMP KIT

710064	Bracket Assy. (Inc. items 1,2,4)		Kit No.	700084
710968	Bracket Bolt Pkg. (Inc. item 16)		Make	Dodge
None	Pulley Bolt Pkg.		Engine	318/360
710969	Idler Bolt Pkg. (Inc. items 8-14,21,22)		Fuel	Gas
None	Fan Spacer Bolt Pkg.		Year	1995-
			Equipment	With & without smog**
			Revised	E 12-2-02

ITEM	PART #	DESCRIPTION	ITEM	PART #	DESCRIPTION
1.	710965	Engine bracket	8.	110436	3/8NC x 2 1/2 Bolt
2.	710912	Pump mount plate	9.	110493	3/8NC x 2 1/4 Bolt
3.	700122	Power steering bracket	10.	110672	3/8 Lock washer
4.	710970	Idler bracket	11.	110676	3/8 Flat washer
5.	*	Pump	12.	110645	3/8NC Wiz nut
6.	710918	Key	13.	110612	3/8NC Nut
7.	740179	Clutch assy. (inc. a-i)	14.	710973	Spacer/.675"
7a.	-----	Coil	**15.	740180	Micro-V Belt K071005 Without smog
7b.	-----	Snap ring/large		740279	Micro-V Belt K071134 With smog
7c.	-----	Pulley	16.	110440	3/8NC x 1 wiz bolt
7d.	-----	Snap ring/small	17.	110425	3/8NC x 1 1/4 bolt
7e.	-----	Shim	18.	120277	Adapter 8MB-8MJ
7f.	-----	Hub/armature	19.	120251	Adapter 10MB-10MJ
7g.	-----	Bolt	20.	120338	Adapter 12-10FJX
7h.	-----	Lock washer	21.	110157	5/16NC x 3/4 Set screw
7i.	-----	Hub/Clutch	22.	110158	5/16NC Jam nut

\* The only pumps available for this kit are 720176 and 720178 which are .61 cu. in. and 'AA' mount.

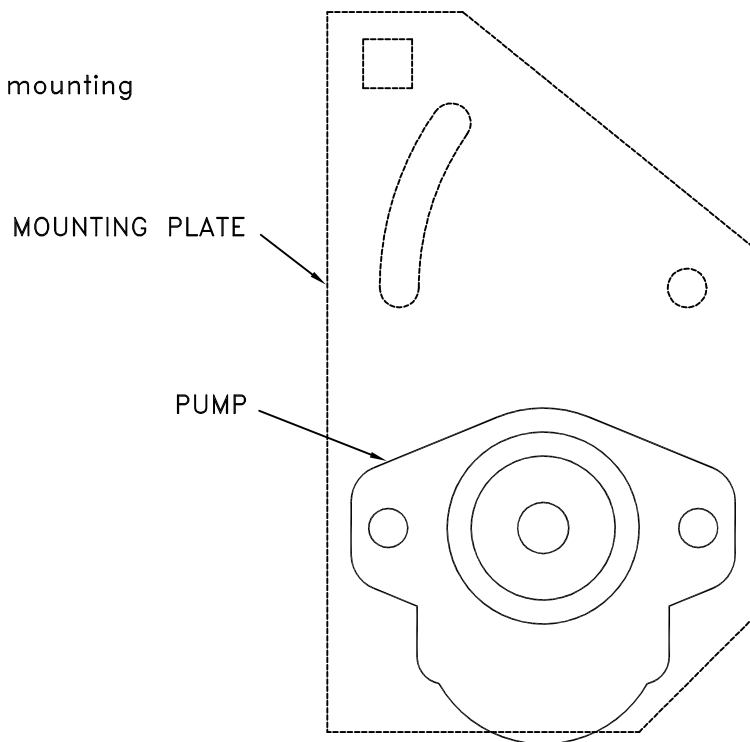
\*\* IDENTIFY WITH OR WITHOUT SMOG BY 8th DIGIT OF TRUCK VIN: 5=360 WITH SMOG, Z=360 WITHOUT SMOG, Y=318 GAS NO SMOG, T=318 PROPANE NO SMOG



(A) Denotes bolt holes in engine to locate corresponding holes in Pump Brkt.  
Bolts without an item No. are Dodge OEM bolts that are reused in their original location.

FIG. 2

Pump must be oriented on mounting plate as shown.



# DewEze

Clutch Pump Kit  
#700084  
Dodge 318/360  
1995-

## INSTALLATION INSTRUCTIONS

**NOTE: The only pumps available for this kit are 720176 and 720178 which are .61 cu. in. and an AA mount.**

**NOTE: Suction hose to pump must be a wire braid hose; minimum 1" I.D. for 7 GPM pump. Installation with a smaller suction hose will void the pump warranty.**

1. Disconnect battery.
2. Remove fan and fan shroud.
3. Before removing OEM belt, make a mark on the OEM idler tensioner and a mark lined up with that on the mounting bracket. This is to get the same tension with the new belt.
4. Remove OEM belt.
5. Remove power steering bracket by unscrewing three bolts and one stud with two nuts.
6. Remove power steering pump from bracket by unscrewing four bolts.
7. Mount power steering pump to DewEze steering bracket (3) with four OEM bolts and washers.
8. Place OEM bolts and flat washers through steering bracket, through DewEze engine bracket (1) and into engine at locations A, B, C, and D.
9. Remove wire clip from holder on engine at location J.
10. Hold pump (5) onto back of mounting plate (2) and clutch hub (7i) onto front of mounting plate, making sure anti-rotation pin (G) on front of hub is on bottom. Place two 3/8 x 1 1/4 bolts (17), 3/8 lock washers (10), and 3/8 flat washer (11) through pump, through mounting plate and thread into hub.
11. Slide coil (7a) over hub, aligning hole in the back plate of coil with the anti-rotation pin (G) in the hub. The wires from the coil should hang down below. Install large snap ring (7b) to hold coil in place.  
**NOTE: THE BEVEL ON BOTH SNAP RINGS MUST FACE AWAY FROM THE PUMP. REFER TO INSTRUCTION SHEET FOR THE CLUTCH FOR CORRECT INSTALLATION OF SNAP RINGS.**
12. Slide clutch pulley (7c) onto hub. Install small snap ring (7d) to hold pulley in place.
13. Place the key (6) onto the pump shaft. Slide the hub/armature (7f) onto pump shaft aligning the keyways.  
**NOTE: SET THE AIR GAP BETWEEN THE HUB/ARMATURE AND THE PULLEY USING SHIMS (7e) ACCORDING TO INSTRUCTION SHEET FOR CLUTCH.**
14. Thread bolt (7g) and lock washer (7h) into pump shaft. Torque to value in clutch instruction sheet.
15. Install pump, clutch, and plate assembly onto engine bracket at location E and F with two 3/8 x 1 w/iz flange bolts (16). Do not tighten yet.
16. Tie wire to holder on engine that you previously removed at location J using a wire tie.

17. Remove OEM idler from alternator bracket at location H.
18. Remove OEM bolt from alternator bracket at location I.
19. Place 3/8 x 2 1/4 bolt (9) through the OEM idler pulley, through .675" spacer (14), through idler bracket (4) and thread 3/8 w/ flange nut (12) onto back.
20. Place 5/16 x 3/4 setscrew (21) in top of idler bracket. Thread 5/16 jam nut (22) onto setscrew.
21. Place idler bracket with idler at location I on the alternator using 3/8 x 2 1/2 bolt (8) and 3/8 flat washer (11) and 3/8 lock washer (10).
22. Install serpentine belt (15). Mark on tensioner should line up with mark on mounting bracket to obtain same tension force as with OEM belt. If marks do not line up, rotate pump plate (2) in slot at location E and F until marks do line up.
23. Reconnect battery.
24. Run the engine and check for clearance, alignment, and vibration problems. Adjust as needed.
25. Install fan and fan shroud.
26. Run the engine again checking for clearance.