

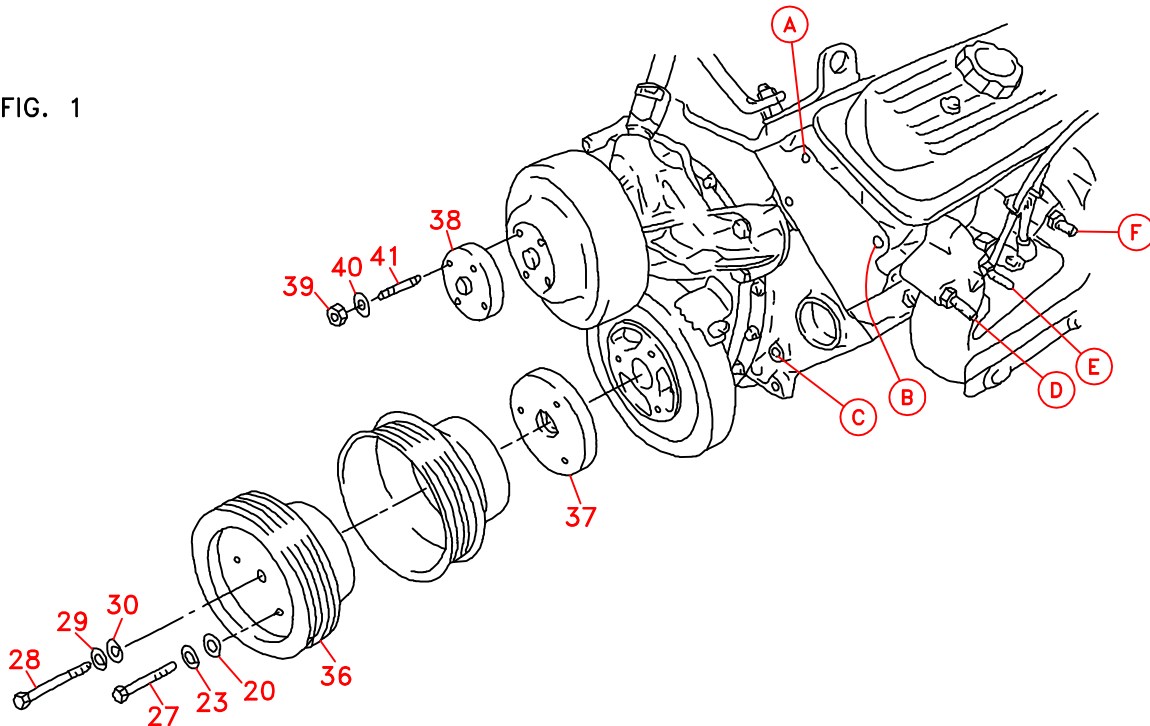
DewEze CLUTCH PUMP KIT

710063	Bracket Assy. (Inc. items 1-3)		Kit No.	700083
710956	Bracket Bolt Pkg. (Inc. items 11,13,14,18-24,31,32)		Make	Chevy
710957	Pulley Bolt Pkg. (Inc. items 20,23,27-30)		Engine	350
710958	Idler Bolt Pkg. (Inc. items 7,12,33,35)		Fuel	Gas
700125	Fan Spacer Bolt Pkg. (Inc. item 39-41)		Year	1995
			Options	
			Revised	A 1-31-95

ITEM	PART #	DESCRIPTION	ITEM	PART #	DESCRIPTION
1.	710951	Engine bracket	23.	110672	3/8 Lock washer
2.	710954	Gusset/exhaust man.	24.	110479	10mm x 30mm x 1.5 Bolt
3.	710955	Pump plate	25.	OEM	Nut
4.	700120	Alternator bracket	26.	-----	-----
5.	*	Pump	27.	110152	3/8NF x 4 1/2 Bolt
6.	740148	Clutch/serpentine	28.	110153	7/16NF x 6 Bolt
7.	110403	1/2NC x 2 1/2 Bolt	29.	110671	7/16 Lock washer
8.	740173	Idler tensioner	30.	110670	7/16 Flat washer
9.	740171	Idler pulley	31.	110397	3/8NC x 3 1/2 Bolt
10.	710961	Spacer/air. cond. top	32.	110155	3/8 SAE Flat washer
11.	710962	Spacer/.375" long	33.	710946	5/16 x 1 Roll pin
12.	710963	Spacer/.438" long	34.	OEM	Nut
13.	710964	Spacer/.600" long	35.	110610	1/2NC Nut
14.	110150	3/8NC x 1 1/2 Wiz bolt	36.	740174	Crank pulley
15.	OEM	Bolt	37.	740175	Spacer/OEM crank pulley
16.	OEM	Bolt	38.	700126	Fan spacer
17.	OEM	Bolt	39.	110643	8mm x 1.25 Nut
18.	110437	3/8NC x 3/4 Wiz bolt	40.	110674	5/16 Lock washer
19.	110645	3/8NC Wiz nut	41.	110144	8mm x 45mm x 1.25 Stud
20.	110676	3/8 std. flat washer	42.	740176	Serpentine belt/K080585
21.	110395	3/8NC x 1 Skt hd bolt			
22.	110425	3/8NC x 1 1/4 Bolt			

* See Master List for Pump Part No.

FIG. 1



(A) Denotes bolt holes in engine to locate corresponding holes in Pump Brkt.

FIG. 2

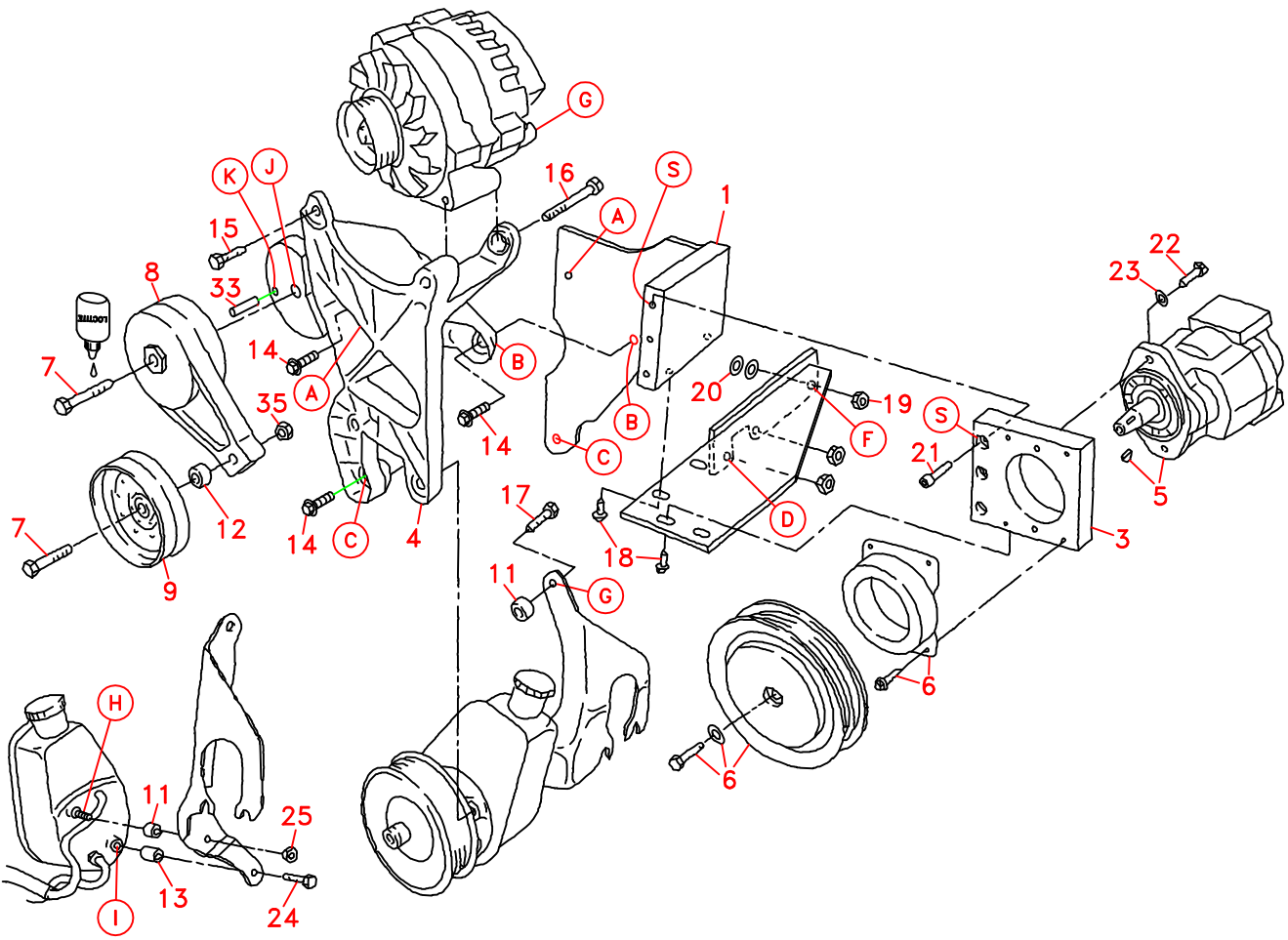


FIG. 3

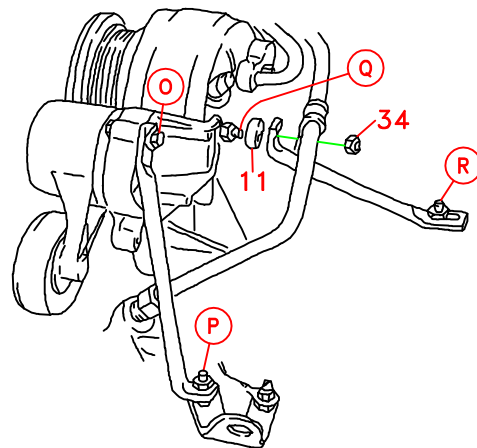
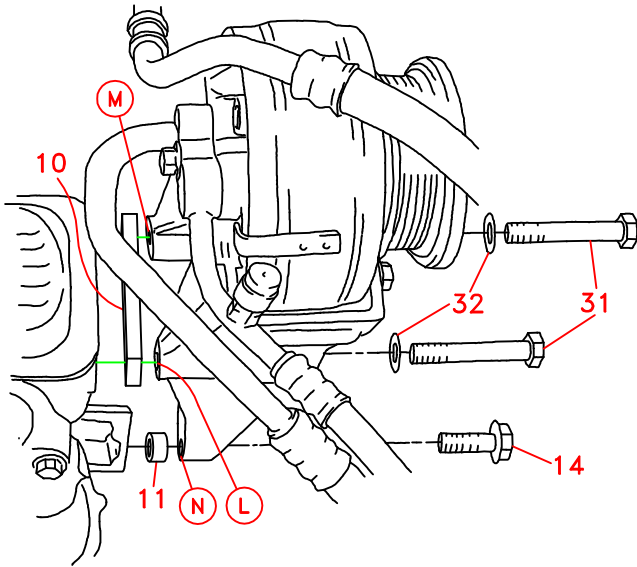
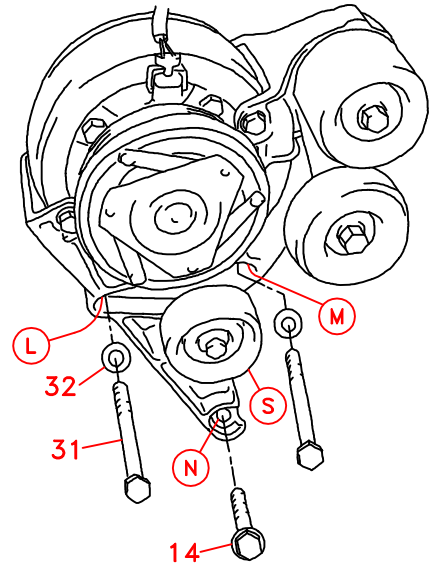


FIG. 4



SIDE VIEW-A/C BRACKET



FRONT VIEW-A/C BRACKET

Chevy 350
1995
Clutch Pump Kit #700083

INSTALLATION INSTRUCTIONS

NOTE: Suction hose to pump must be a wire braid hose; minimum 1" I.D. for 7 & 9 GPM pumps; 1 1/2" for 12 & 17 GPM pumps. Installation with a smaller suction hose will void the pump warranty.

1. Disconnect battery.
2. Remove fan and fan shroud.
3. Disconnect wires from alternator.
4. Remove alternator by unbolting two bolts through cast aluminum bracket and one bolt through stamped steel bracket.
5. Remove pulley from power steering pump. Remove steering pump and rear bracket by removing three wiz bolts from cast aluminum bracket and removing two nuts holding stamped steel bracket onto exhaust manifold.
6. Remove steel bracket from steering pump by unscrewing two nuts on rear of pump.
7. Remove bottom stud from back of steering pump.
8. Place .375" spacer (11) on top stud.
9. Replace steel bracket on steering pump, placing .600" spacer (13) between pump and bracket at bottom hole, location I. Bolt on with 10mm x 30mm bolt (24). Replace OEM nut on top stud. Tighten bolt and nut.
10. Remove cast aluminum alternator bracket from engine by removing three wiz bolts.
11. Leave OEM stud in head at location A to temporarily hold brackets in place.
12. Place power steering pump and bracket on exhaust manifold studs at locations D and E.
13. Put engine bracket (1) in place (location A).
14. Bolt alternator onto DewEze alternator bracket (4) using two OEM bolts.
15. Put alternator bracket into place over engine bracket (1) using two 3/8 x 1 1/2 wiz flange bolts (14) at locations B and C.
16. Remove stud from head at location A. Replace with 3/8 x 1 1/2 wiz flange bolt (14).
17. Replace power steering pump onto alternator bracket with three OEM wiz bolts.

18. Put exhaust manifold gusset (2) in place at locations D, E, and F. Hold on with three 3/8 wiz nuts (19) on studs. Do not tighten yet.
19. Start two 3/8 x 3/4 wiz bolts (18) through gusset into bottom of engine bracket. Do not tighten.
20. Place pump (5) onto pump plate (3) with two 3/8 x 1 1/4 bolt (22) and 3/8 lock washer (23).
21. Place pump and plate assembly on engine bracket with three 3/8 x 1 socket head bolts (21) and tighten.
22. Install two 3/8 x 3/4 wiz bolts (18) through front of gusset (2) into pump plate. Do not tighten.
23. Tighten nuts on exhaust manifold gusset (locations D, E, and F) first, then tighten the four 3/8 x 3/4 wiz bolts underneath gusset.
24. Place .375 spacer (11) between rear of alternator (location G) and power steering bracket using OEM bolt.
25. Reconnect wires to alternator.
26. Replace pulley on power steering pump.
27. Remove OEM crankshaft pulley. Place pulley spacer (37) between damper and OEM pulley. Place DewEze crank pulley (36) into OEM pulley bolt on with three 3/8 x 4 1/4 bolts (27) with lock and flat washers (20, 23) and one 7/16 x 6 bolt (28) with lock and flat washers (29, 30).
28. Bolt clutch coil (6) onto pump plate with four 1/4 x 1 1/2 wiz flange bolts provided with clutch. Bolt clutch onto pump shaft with 5/16NF x 1 1/4 bolt and 5/16 heavy flat washer provided.
29. Remove OEM stud bolts in water pump pulley. Place the short-threaded end of the four 8mm x 45mm studs (41) into the pulley.
30. Slide the fan spacer (38) over the stud bolts and temporarily secure in place with two lock washers (40) and two 8mm nuts (39).
31. Press 5/16 x 1 roll pin into alternator bracket at location K. Leave 5/16" sticking out.
32. Slide belt tensioner (8) onto roll pin. Place 1" wrench on center nut of tensioner and turn clockwise until hole lines up with threaded hole in aluminum bracket. Put Loctite on 1/2 x 2 1/2 bolt (7) and insert through tensioner into threaded hole and tighten.
NOTE: TORQUE 1/2 X 2 1/2 BOLT (7) TO 25 FT/LBS. DO NOT OVER TIGHTEN OR TENSIONER WILL NOT PIVOT.
33. Place 1/2 x 2 1/2 bolt (7) through idler pulley (9). Place .438" spacer (12) on threaded end of bolt. Screw 1/2 x 5 or 1/2 x 6 bolt (whatever length you have available) into end of tensioner arm and lift up on bolt so crescent wrench can be

- put around outside of arm. Lift crescent wrench up, remove your 1/2 bolt you used as a handle, and screw 1/2 x 2 1/2 bolt with idler pulley and spacer into tensioner arm and tighten. Remove crescent wrench.
34. Remove OEM bolt from brace on rear of idler tensioner on air conditioner bracket at location O. Loosen nut at other end of brace at location P.
 35. Remove nut from clamp holding water line at rear of air conditioner at location Q.
 36. Drain radiator and remove bottom radiator hose from engine.
 37. Remove idler below air conditioner pulley at location S. Remove bottom bolt from A/C bracket at location N. Replace it with a 6" long stud or bolt temporarily. Remove top bolt at location L and replace with 6" long bolt. Remove remaining bolt at location M and slide A/C bracket forward toward radiator.
 38. Place one end of top A/C spacer (10) between A/C bracket and engine at location M. Insert 3/8 x 3 1/2 bolt (31) and small diameter 3/8 flat washer (32) through A/C bracket, through spacer and just start into engine block.
 39. Remove long stud or bolt from location L and replace with 3/8 x 3 1/2 bolt (32) and small diameter 3/8 flat washer (32) through other hole of spacer (10) and just start into engine block.
 40. Remove bottom bolt at location N. Place .375" long round spacer (11) between rear of A/C bracket and engine block. Tighten all bolts in A/C bracket pulling bracket tight up against engine.
 41. Loosen nut on brace on intake manifold at location R. Place .375" long spacer (11) between rear of A/C and top of brace at location Q. Replace OEM nut.
 42. Replace OEM idler at location S.
 43. Replace bottom radiator hose.
 44. Replace bolt in brace at rear of idler tensioner at location O and tighten. Tighten nut at location P.
 45. Install OEM serpentine belt.
 46. Install pump drive serpentine belt.
 47. Run the engine checking for any installation or alignment problems. Adjust as needed.
 48. Remove the two nuts holding the fan spacer on. Replace the fan and secure with all four nuts and lock washers. Replace fan shroud.
 49. Run engine again checking for clearance, vibration, and alignment.