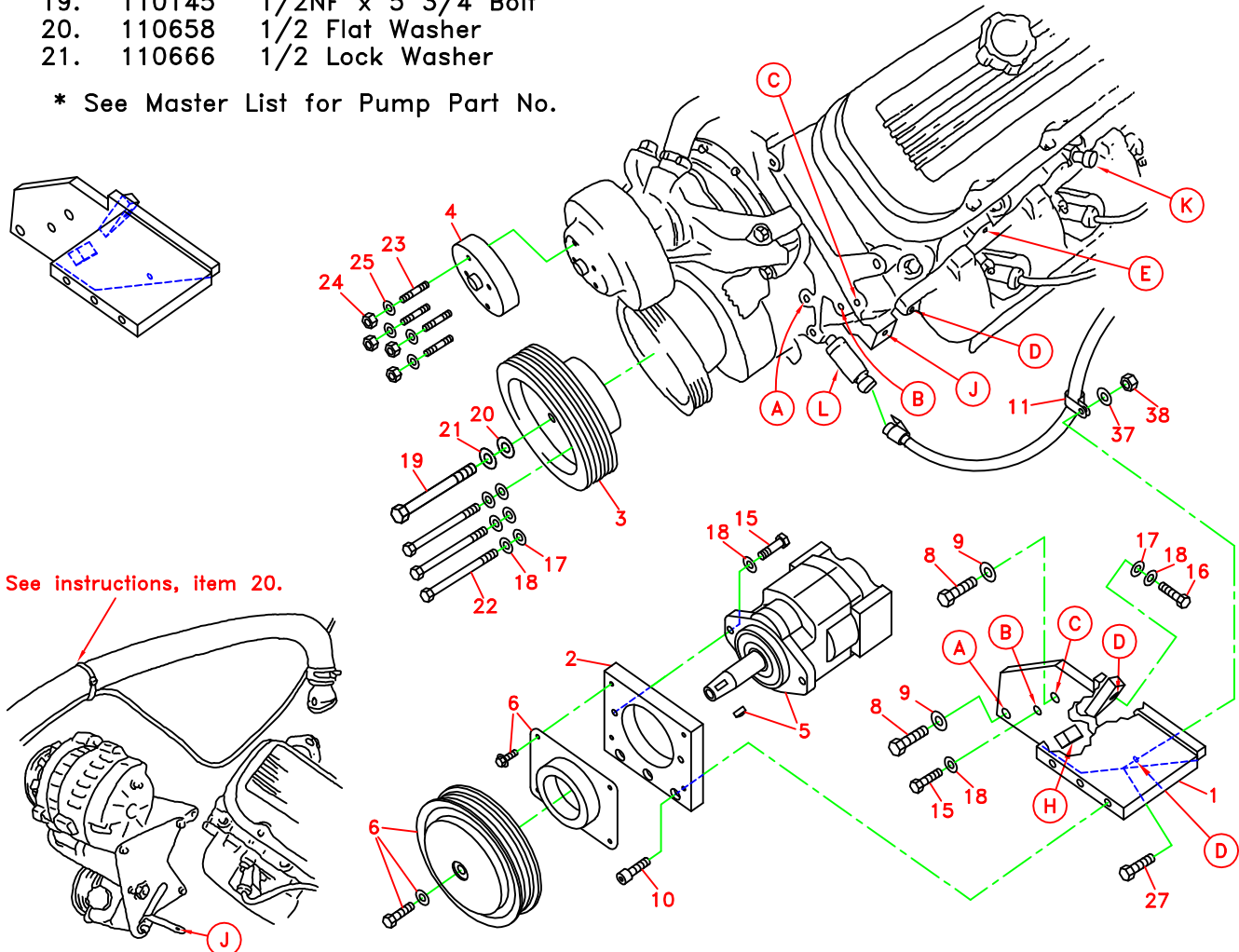


DewEze CLUTCH PUMP KIT

710062	Bracket Assy. (Inc. items 1,2,12,13)		Kit No.	700082
710947	Bracket Bolt Pkg. (Inc. items 8-11,15-18,27,37,38)		Make	Chevy
710943	Pulley Bolt Pkg. (Inc. items 17-22)		Engine	454
710944	Idler Bolt Pkg. (Inc. items 25,28-36)		Fuel	Gas
700125	Fan Spacer Bolt Pkg. (Inc. item 23-25)		Year	1995
			Options	
			Revised	C 10-3-95

ITEM	PART #	DESCRIPTION
1.	710934	Engine Bracket
2.	710936	Pump Plate
3.	740169	Crank Pulley
4.	700126	Fan Spacer
5.	*	Pump
6.	740148	Clutch, Serpentine
7.	740171	Idler pulley
8.	110535	7/16NC x 1 1/2 Bolt
9.	110671	7/16 Lock Washer
10.	110395	3/8NC X 1 Skt hd bolt
11.	200019	Adel clamp
12.	710940	Tensioner plate
13.	710945	Link
14.	740173	Tensioner, idler pulley
15.	110425	3/8NC x 1 1/4 Bolt
16.	110404	3/8NC x 1 3/4 Bolt
17.	110676	3/8 Flat Washer
18.	110672	3/8 Lock Washer
19.	110145	1/2NF x 5 3/4 Bolt
20.	110658	1/2 Flat Washer
21.	110666	1/2 Lock Washer
22.	110146	3/8NF x 5 Bolt
23.	110144	8mm x 45mm x 1.25 Stud
24.	110643	8mm X 1.25 Nut
25.	110674	5/16 Lock Washer
26.	740172	Serpentine belt, K080590
27.	110464	1/4NC x 1 Bolt
28.	110514	7/16NC x 5 1/4 Bolt
29.	110559	8mm x 40mm x 1.25 Bolt
30.	110377	5/16NC x 1 1/2 Bolt
31.	710948	Spacer, .570" long
32.	110665	5/16 Flat washer
33.	110608	5/16NC Nut
34.	110125	1/2NC x 2 1/4 Bolt
35.	110403	1/2NC x 2 1/2 Bolt
36.	110610	1/2NC Nut
37.	110667	1/4 Lock washer
38.	110609	1/4NC Nut

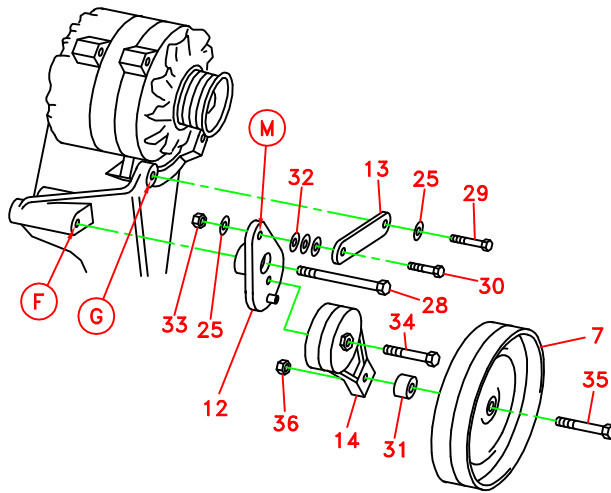
* See Master List for Pump Part No.



See instructions, item 20.

(A) Denotes bolt holes in engine to locate corresponding holes in Pump Brkt.

FIG. 2



Chevy 454
1995
Clutch Pump Kit #700082

INSTALLATION INSTRUCTIONS

NOTE: Suction hose to pump must be a wire braid hose; minimum 1" I.D. for 7 & 9 GPM pumps, 1 1/4" I.D. for 12 & 17 GPM pumps. Installations with smaller suction hoses will void the pump warranty.

1. Disconnect battery.
2. Remove top half of fan shroud. Remove fan.
3. Remove OEM serpentine belt.
4. Disconnect wires from alternator.
5. Unplug wire to heat sending unit (location K). Unplug wire to oil pressure sending unit (location L).
6. Remove power steering pump return line at brake booster.
NOTE: Items 4-6 are to allow the alternator and power steering pump to slide forward.
7. Remove bolts - three on front and one on lower left of engine - attaching alternator/power steering pump to engine. Slide alternator/power steering bracket forward toward radiator.
8. Remove front exhaust manifold bolt (hole D).
9. Slide DewEze bracket (1) into place. Attach with:
7/16 x 1 1/2 bolt (8) and flat washer at hole A and C.
3/8 x 1 1/4 bolt (15) and flat washer at hole B.
3/8 x 1 3/4 bolt (16), lock and flat washer at hole D.
10. Assemble pump (5) onto plate (2) with two 3/8 x 1 1/4 bolt (15) and 3/8 lock washer (18). Attach pump and plate to bracket (1) with three 3/8 x 1 socket head bolts (10).
11. Bolt clutch coil onto plate with four 1/4 x 1 1/2 wiz flange bolts provided with clutch. Bolt clutch onto pump shaft with 5/16NF x 1 1/4 bolt and 5/16 heavy flat washer provided.
12. Replace OEM Alt./Power Steering Bracket using OEM bolts. Tab J goes through slot H in DewEze Bracket.
13. Reconnect wires to alternator. Replace power steering hose. Plug wire to heat sending unit (location K) back in. Place wire to oil pressure sending unit (location L) through Adel clamp (11). Attach clamp to rear of Deweze bracket at hole E with 1/4 x 1 bolt (27), 1/4 lock washer (37), and 1/4 nut (38).
14. Replace OEM serpentine belt.
15. Remove OEM bolts from crankshaft pulley. Place DewEze crank pulley (3) into OEM pulley with one 1/2 x 5 3/4 NF bolt (19) with lock and flat washers and three 3/8 x 5 NF bolts (22)

with lock and flat washers.

13. Remove OEM stud bolts in water pump pulley. Place the short threaded end of the four 8mm x 45mm studs (23) into the pulley.
14. Slide the fan spacer (4) over the stud bolts and temporarily secure in place with two lock washers (25) and two nuts (24).

See Fig. 2 for the following:

15. Remove OEM bolt from alternator bracket at location F. Attach idler plate (12) onto alternator bracket with 7/16 x 5 1/4 bolt (28) at location F. Do not tighten yet.
16. Remove OEM bolt from alternator at location G. Attach idler link (13) with 8mm x 40mm bolt (29) and lock washer (25). Attach other end of idler link to idler plate at location M with 5/16 x 1 1/2 bolt (30). Place three 5/16 flat washers (32) between link and idler plate to act as spacers. Tighten with 5/16 lock washer (25) and 5/16 nut (33). Tighten 7/16 bolt at location F.
17. Slide belt tensioner (14) onto roll pin in idler plate. Place 1" wrench on center nut of tensioner and turn clockwise until hole lines up with threaded hole in idler plate. Put Loctite on 1/2 x 2 1/4 bolt (34) and insert through tensioner into threaded hole and tighten.
NOTE: TORQUE 1/2 X 2 1/4 BOLT (34) TO 25 FT/LBS. DO NOT OVER TIGHTEN OR TENSIONER WILL NOT PIVOT.
18. Attach idler pulley (7) onto tensioner with 1/2 x 2 1/2 bolt (35), placing .625" long spacer (37) between pulley and tensioner. Tighten bolt. Place 1/2 nut (36) onto bolt at rear of tensioner and tighten.
19. Install the serpentine belt (26).
20. Tie the small plastic line from the fuel cannister to the upper radiator hose for clearance from fan and belts.
21. Run the engine checking for any installation or alignment problems. Adjust as needed.
22. Remove the two nuts holding the fan spacer on. Replace the fan and secure with all four nuts and lock washers. Replace fan shroud.
23. Run engine again checking for clearance, vibration, and alignment. Retighten belts if needed.

—