

# DEWEZE CLUTCH PUMP KIT

710059	Bracket Assy. (Inc. item 1)	Kit No.	700080
710895	Bracket Bolt Pkg. (Inc. items 13-15, 27-37, 44)	Make	Ford
None	Pulley Bolt Pkg.	Engine	7.3L Dir. Inj.
710896	Idler/Tensioner Bolt Pkg. (Inc. items 11, 12, 15, 16, 18, 19, 47, 48)	Fuel	Diesel
700274	Tensioner update (Inc. items 8, 11, 15, 17, 18, 24, 46, 48)	Year	1995
None	Fan Spacer Bolt Pkg.	Options	Turbo
		Revised	I 10-21-04

ITEM	PART #	DESCRIPTION	ITEM		
1.	710059	Engine bracket	17.	110166	1/2NC X 2 Socket head bolt
2.	700111	Alternator bracket	18.	110567	M10 x 80 Bolt
3.	740166	Crankshaft pulley	19.	110588	1/2NC Wiz flange nut
4.	700118	Water pump pulley	20.	120075	1/2 Street ell 45°
5.	*	Pump	21.	220115	1/2 x 3/8 Bushing
6.	740148	Clutch/serpentine	22.	OEM	Hose barb
7.	711216	Foot mount	23.	740158	Idler pulley/serp. .50 I.D.
8.	740255	Tensioner	24.	740270	Belt, PolyCog 5080895
9.	740157	Idler pulley/serp. .63 I.D.	25.	720123	1" Street ell 45°.....5.79 GPM
10.	740151	Idler pulley/flats	26.	120076	1 1/4" Street ell 45°.....12.17 GPM
11.	711615	Idler bushing, flange	27.	120077	3/8" Street ell 45°.....5.7 GPM
12.	710900	Idler bushing, straight	28.	---	See Item 20.....9 GPM
13.	110425	3/8NC x 1 1/4 Bolt	29.	720104	3/4" Street ell 45°..12.17 GPM
14.	110672	3/8 Lock washer	30.	710987	Link/extension
15.	110676	3/8 Flat washer	31.	120083	Hose splice
16.	710910	5/8NC x 2 1/4 Bolt showed head	32.	720107	Hose clamp
			33.	200020	Adel clamp
			34.	120084	Hose elbow
			35.		
			36.		
			37.		
			38.		
			39.		
			40.		
			41.		
			42.		
			43.		
			44.	700212	Hose/coolant tank
			45.	---	Wire tie
			46.	711614	Tensioner bracket
			47.	110217	M10 x 70 Bolt
			48.	740261	Idler pulley

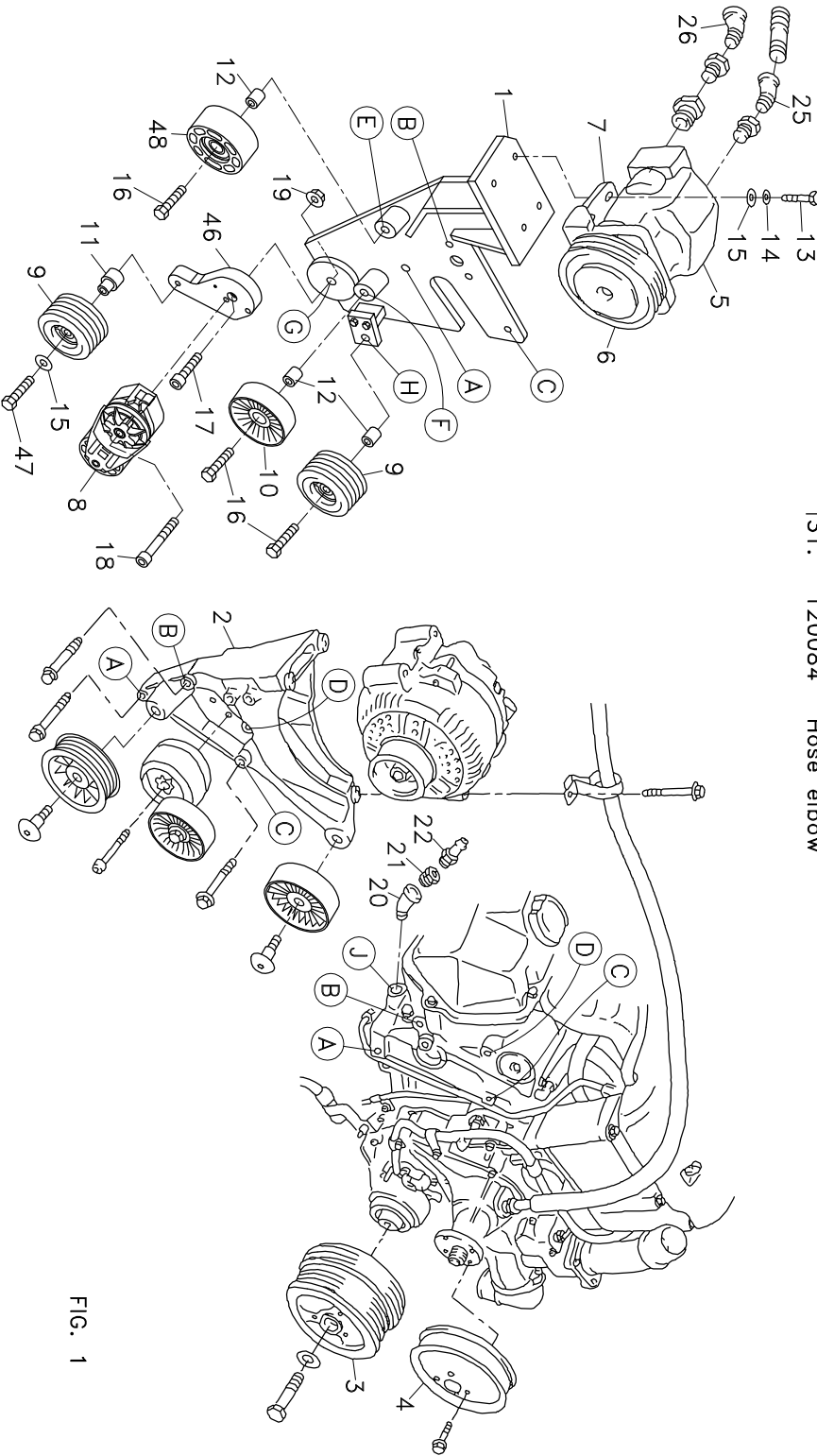


FIG. 1

\* See Master List for Pump Part No.

Ⓐ Denotes bolt holes in engine to locate corresponding holes in Pump Brkt. Bolts without an item No. are Ford OEM bolts that are reused in their original location.

BELT INSTALLATION  
FIG. 2

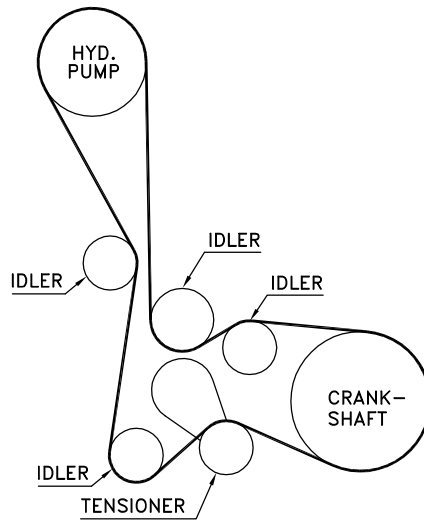


FIG. 3

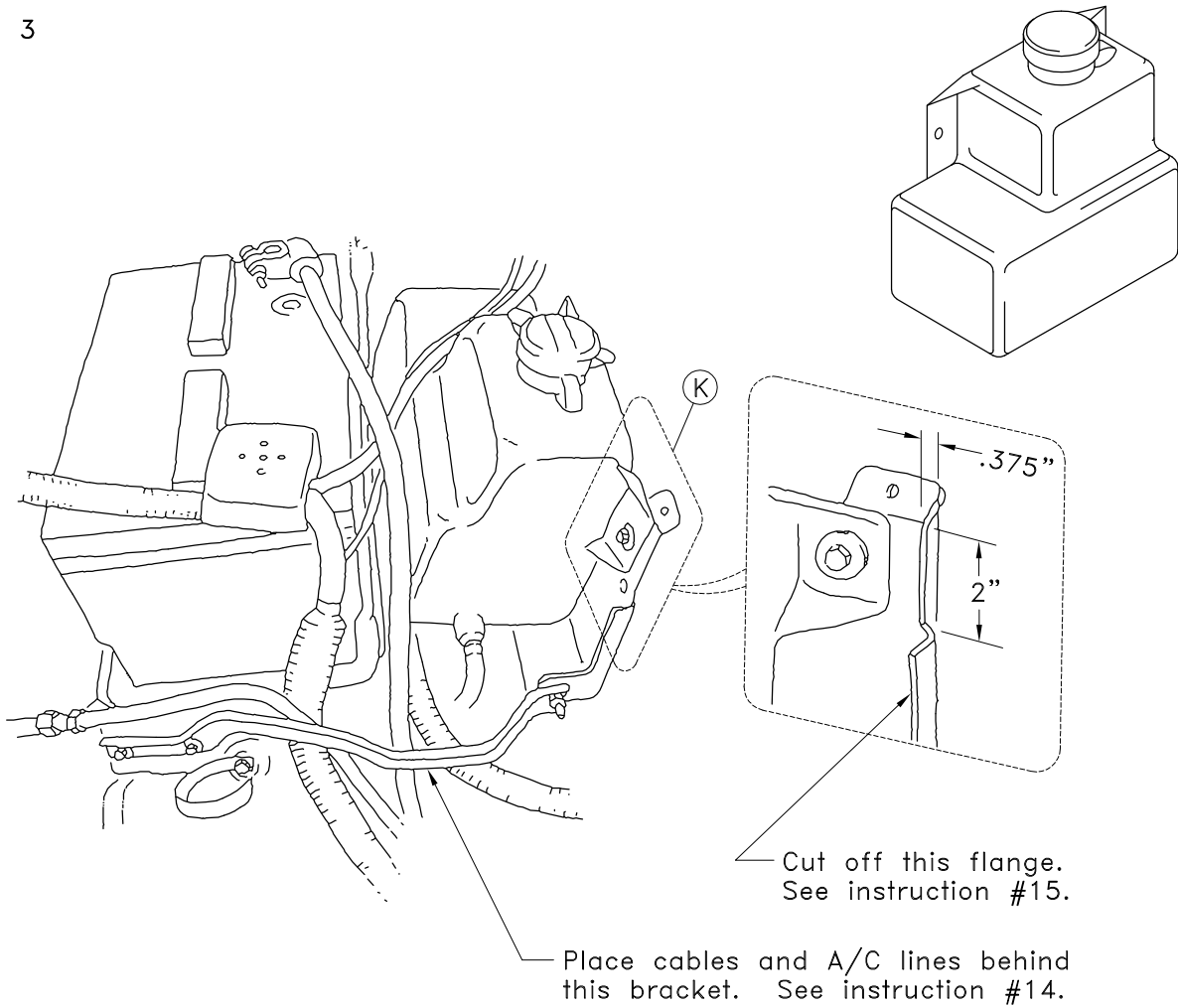


FIG. 4a

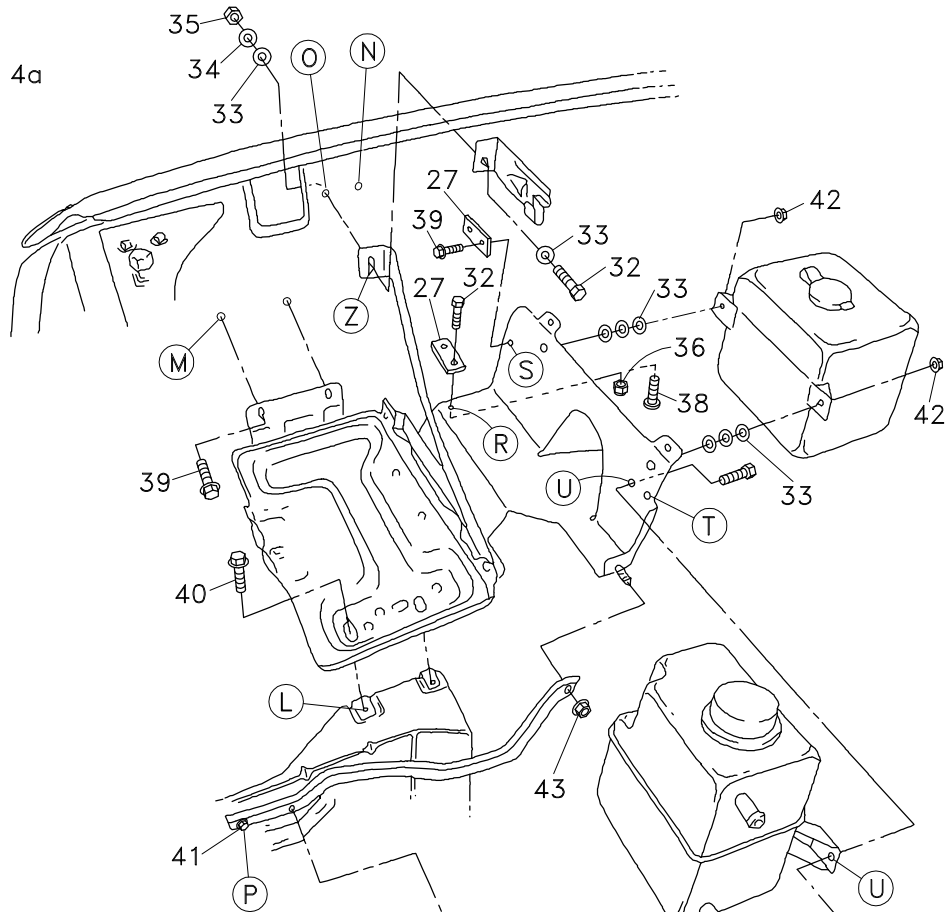


FIG. 4b

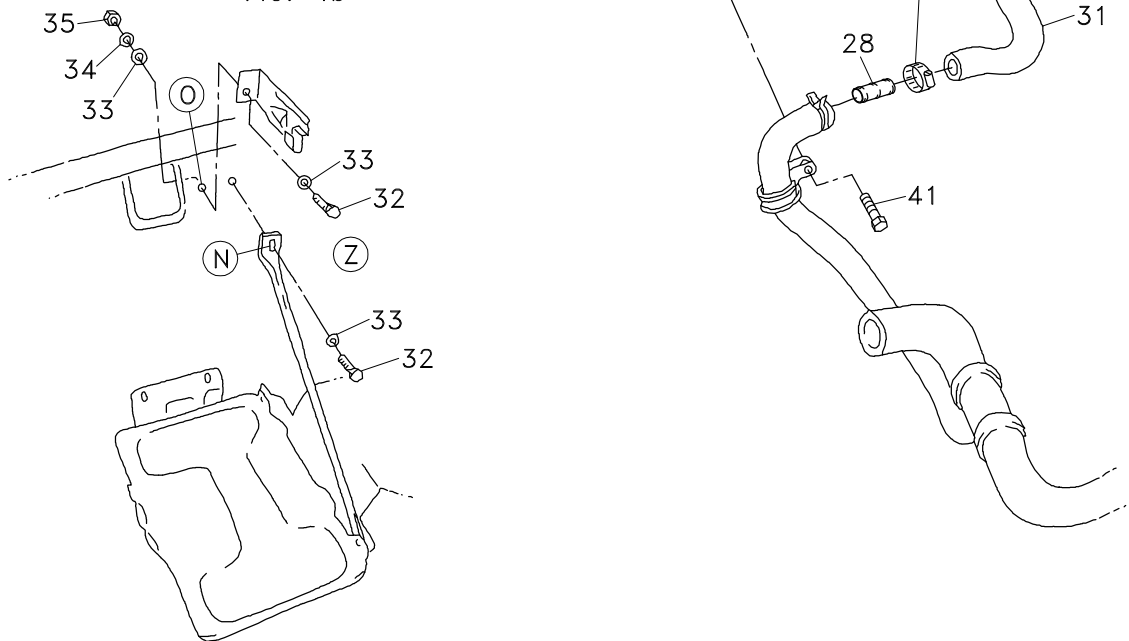


FIG. 5

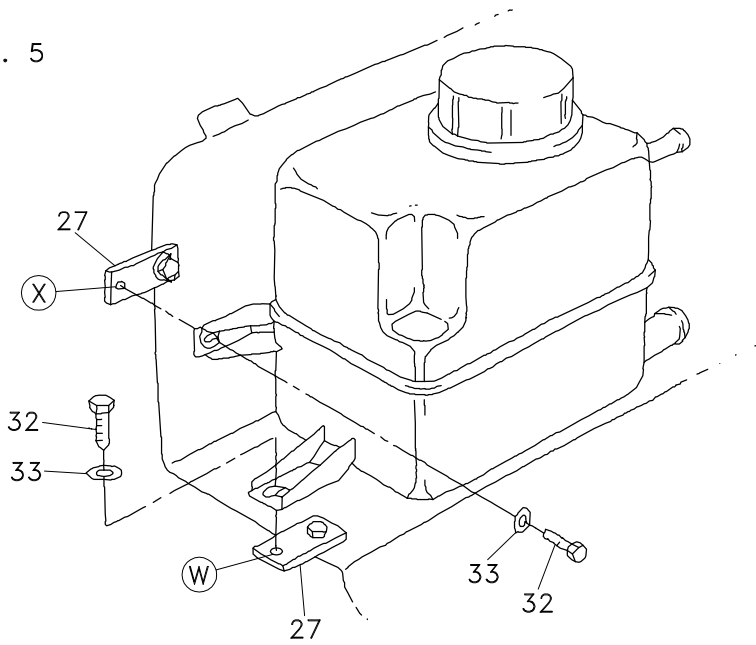
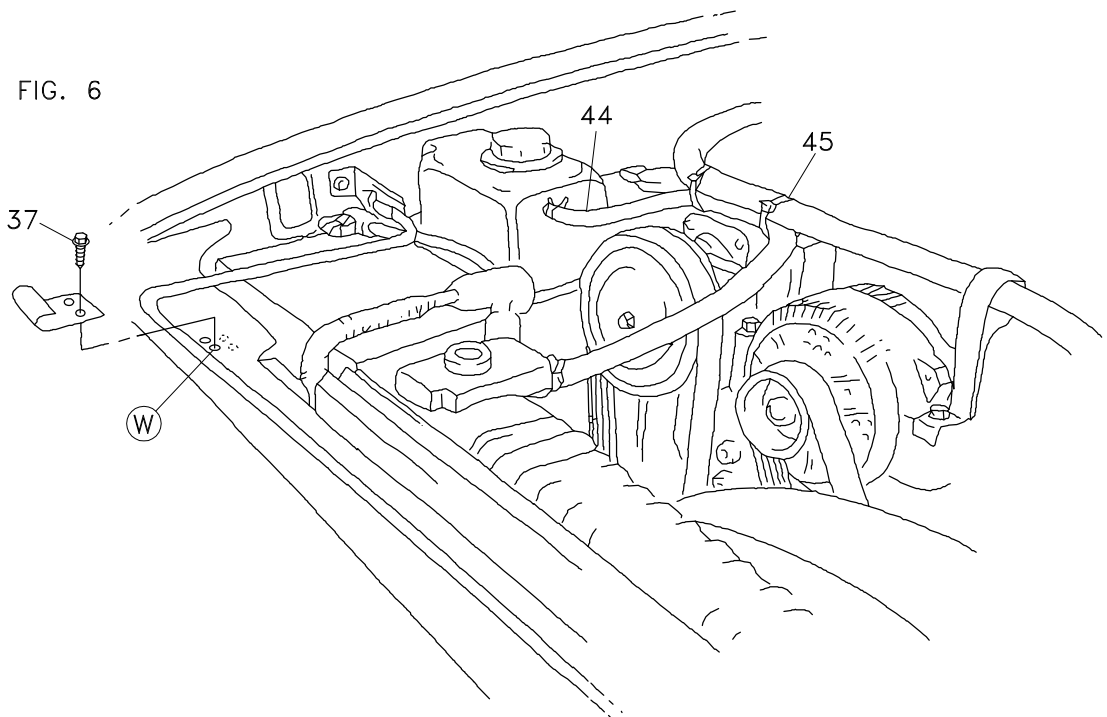


FIG. 6



## INSTALLATION INSTRUCTIONS

**NOTE: Suction hose to pump must be a wire braid hose; minimum 1" I.D. for 7 & 9 GPM pumps, 1 1/4" I.D. for 12 & 17 GPM pumps. Installations with smaller suction hoses will void the pump warranty.**

**NOTE: If your radiator coolant tank is shaped like the tank in Fig. 3, skip items 1-12 and do item 13. If your coolant tank is shaped like Fig. 5, do items 1-12 skipping item 13.**

1. Refer to Fig. 4a. Remove jack handle. Remove battery. Disconnect hoses to coolant tank and washer fluid tank. Remove coolant tank by unscrewing three bolts. Remove washer fluid tank by unscrewing two bolts. Remove brace that goes from battery mounting tray to radiator coolant tank bracket by unscrewing two bolts at location P and one nut at location Q. Remove battery tray, coolant tank bracket and jacket handle clip by unscrewing bolts at location L, M and N.
2. Knock out OEM stud bolt (38) from coolant tank bracket at location R. Bolt on extension link (27) at location R using 1/4 x 1 bolt (32) through untapped hole in link and 1/4 nut (36). Bolt on other link (27) at location S using OEM bolt (39) through untapped hole in link.
3. Refer to Fig. 5. Install coolant tank using 1/4 x 1 bolt (32) and 1/4 flat washer (33) into tapped holes in link at locations W and X. Hold a piece of cardboard under tank to make sure there is clearance between tank and bolt head at location R. Tighten bolts. Remove cardboard.
4. Refer to Fig. 4a. Drill a new .265 hole in coolant tank bracket at location U using hole in tank mounting tab as a guide to drill through. Place 1/4 x 1 bolt (32) through this hole in back side of bracket into tank tab. Fasten with 1/4 flat washer (33) and 1/4 lock nut (36).
5. Place three 1/4 flat washers on each stud bolt at location V back side of tank bracket that mounts washer fluid tank. Slide washer fluid tank onto studs and fasten with OEM nuts (42).
6. Install battery tray/tank bracket back in truck using four OEM bolts (39, 40) at location L and M. If brace at location Z is a flattened hollow tube, fasten it back in its original location (N) with OEM bolt. Place jack handle clip on the hole in front of the brace at location O with 1/4 x 1 bolt (32) and 1/4 flat washer (33). Fasten bolt with 1/4 flat washer (33), 1/4 lock washer (34) and 1/4 nut (35) by inserting through rectangular cut out in inner fender. See Fig. 4b. If brace at location Z is a flat strap, place jack handle clip on top of brace and insert 1/4 x 1 bolt (32) through clip, brace and into inner fender at location O. Fasten bolt with 1/4 flat washer (33), 1/4 lock washer (34) and 1/4 nut (35) by inserting through rectangular cut out in inner fender. See Fig. 4a.
7. Install brace running from battery tray mount to coolant tank bracket, placing battery cables, alternator cable and air conditioner line under brace with one bolt (41) in front end of brace and one nut (43) at location Q. Do not install bolt at location P yet.
8. Inset hose splice (28) into hose elbow (31) and fasten with clamp (29). Place other end of elbow onto bottom outlet on coolant tank with clamp (29).
9. Place Adel clamp (30) onto OEM radiator hose as shown. Place OEM bolt through clamp and onto brace at location P.
10. Push OEM radiator hose onto hose splice using OEM hose clamp.
11. Install one end of 3/8" hose (44) onto top outlet on coolant tank and connect other end to top of radiator using OEM hose clamps. Tie hose to heater hose on top of hydraulic pump using two wire ties (45). See Fig. 6.
12. Drill out rivets holding jack handle clip in front of battery on passenger side. Remove clip. Snap jack handle into clips behind battery and on driver side. Reverse clip so it is facing opposite than the way you removed it and snap it onto jack handle covering holes that it was mounted in. Drive self-tapping screws (37) through holes in clip and into truck. See Fig. 6.

13. Refer to Fig. 3. Remove brace that goes from battery mounting tray to radiator coolant bottle by unscrewing two bolts and one nut. Reattach bracket and place positive and negative battery cables, air conditioning line and cable to alternator beneath bracket. This holds the line and cables away from idler pulleys.
14. If radiator coolant bottle mounting bracket is not notched as shown at location K in Fig. 3, the outer flange needs to be cut off 2" from top to give clearance for the pump mounting bracket.
15. Remove fan and fan shroud.
16. Remove 3 bolts holding alternator on bracket. Move alternator back out of the way.
17. Take off alternator mounting bracket by removing 4 bolts at locations A, B, C and D.
18. Remove heater hose from OEM fitting in engine block at location J. Cut 7" from this end of hose. Remove OEM hose barb and fitting in block. Install 45 degree street ell (20), bushing (21) and OEM hose barb. Replace hose using OEM hose clamp.
19. Hold DewEze pump bracket (1) in place, put DewEze alternator bracket (2) on top of that and secure with OEM bolts.
20. Replace alternator and hose holder onto bracket using OEM bolts.
21. Remove center bolt and flat washer from damper. Use gear puller to remove damper from crankshaft. Replace with DewEze crankshaft pulley (3). Put silicone on the OEM flat washer on the side toward the pulley and replace it and the OEM bolt. The timing mark indicator needs to be bent out away from the pulley for clearance.  
**NOTE: TORQUE CENTER BOLT OF DAMPER TO 220FT/LBS.**
22. Unscrew 4 bolts from water pump pulley and remove pulley, replace with DewEze pulley (4) using the OEM bolts.
23. Place the tensioner bracket (46) on the disk on the lower part of the engine bracket (1) pointing it down at about the 7:30 position, lining up the hole in the tensioner bracket with the locating pin in the engine bracket. Fasten the tensioner bracket with the 1/2 x 2 socket head bolt (17) and 1/2" w/iz flange nut (19) on back side of bracket. Attach the tensioner (8) with the M10 x 80 bolt (18) lining up the pin on the back of the tensioner with the hole in the tensioner bracket.
24. Insert the flanged idler bushing (11) into one serpentine idler pulley (9). Attach this idler to the bottom of the tensioner bracket (46) with the M10 x 70 bolt (47) and a 3/8 flat washer (15).
25. Insert a 5/8 x 2-1/4 bolt (16) through serpentine idler (9) and through .563" long spacer (12). Thread bolt into bracket at location H. Insert a 5/8 x 2-1/4 bolt (16) through flat plastic idler (10) and through .563" long spacer (12). Thread bolt into bracket at location F. Insert a 5/8 x 2-1/4 bolt (16) through steel flat idler (10) and through .563" long spacer (12). Thread bolt into bracket at location E.
26. Assemble pump (5) onto foot mount (7) and clutch (6) onto pump. Attach pump assembly onto top plate of pump mounting bracket with four 3/8 x 1-1/4 bolts (13) and lock (14) and flat (15) washers.
27. Install the serpentine belt (24). Refer to Fig. 2 for belt wrap diagram.
28. Run the engine and check for clearance, alignment and vibration problems. Adjust as needed.
29. Replace the fan and fan shroud.

**CAUTION: Tie down hydraulic hoses so they are clear of the air conditioner lines. The hoses will wear through the A/C lines if they contact.**