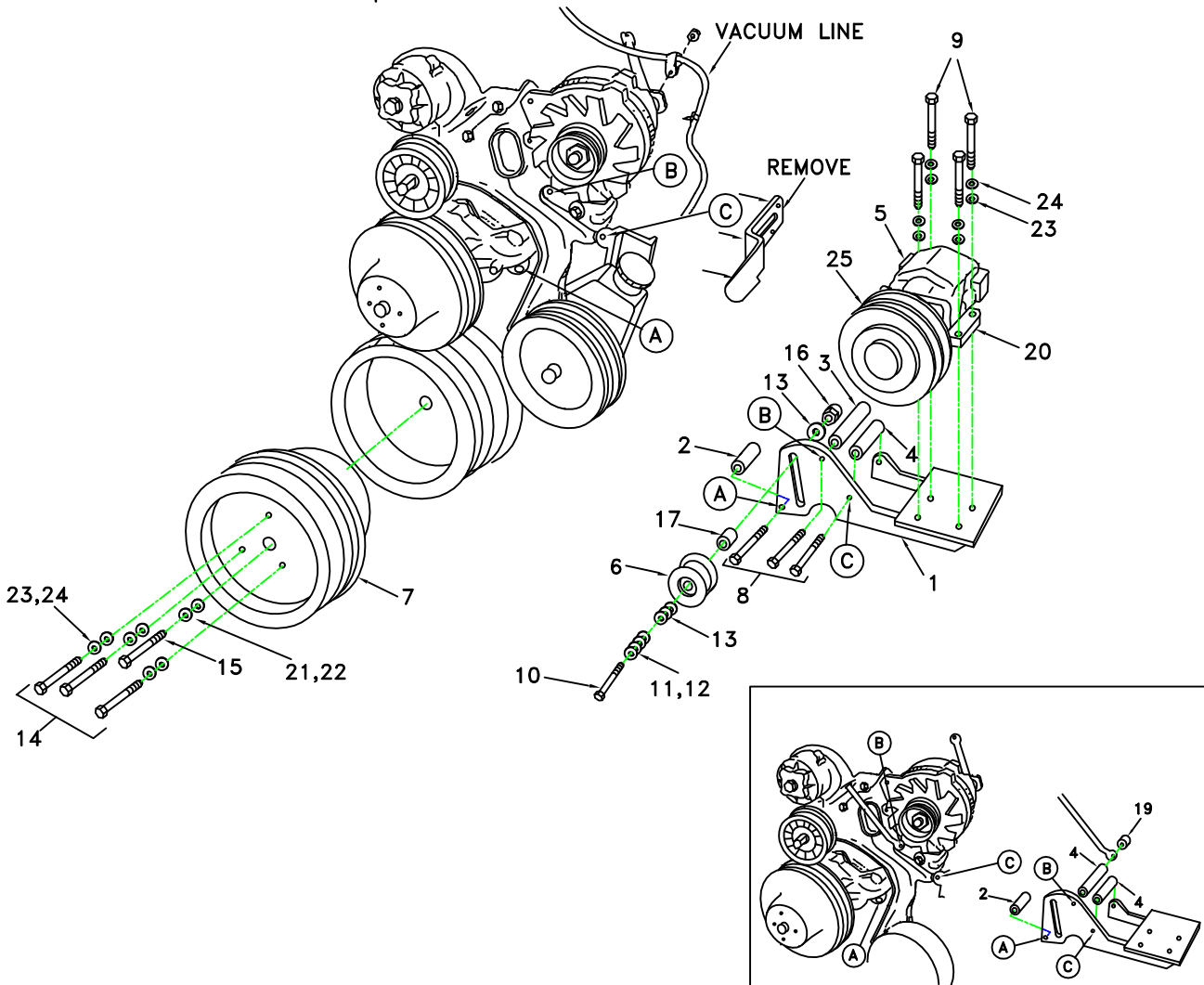


DEWEZE

710032	Bracket Assy. (Inc. item 1)	Clutch Pump Kit	700008
710458	Brkt. Bolt Pkg. (Inc. items 2-4,8,9,20,23,24)	Make	Chevy
710431	Pulley Bolt Pkg. (Inc. items 14,15,21-24)	Engine Size	350
710359	Idler Bolt Pkg. (Inc. items 10-13,16,18)	Fuel	Gas
NONE	Fan Spacer Bolt Pkg.	Year	1988-89
		Options	
		Revised	9-20-93

ITEM	QUAN	PART #	DESCRIPTION
1.	1	710032	Pump Mounting Brkt.
2.	1	710129	Spacer, 2.40"
3.	1	710130	Spacer, 3.74"
4.	2	710131	Spacer, 3.10"
5.	1	*	Pump
6.	1	740040	Idler Pulley
7.	1	740019	Crankshaft Pulley
8.	3	110533	3/8" X 5" NC Bolt
9.	4	110425	3/8" X 1 1/4" NC Bolt
10.	1	110385	5/8" X 4" NC Bolt
11.	2	110668	5/8" Machine Bushing(10 ga.)
12.	2	110669	5/8" Machine Bushing(14 ga.)
13.	4	110650	5/8" Flat Washer
14.	3	110499	3/8" X 4" NF Bolt
15.	1	110551	7/16" X 5 1/4" NF Bolt
16.	1	110639	5/8" NC Lock Nut
17.	1	710157	Spacer, 1.12"
18.	2	740056	V-Belt, Gates A60
19.	1	710132	Spacer, .40"
20.	1	710353	Footmount
21.	1	110670	7/16" Flat Washer
22.	1	110671	7/16" Lock Washer
23.	10	110672	3/8" Lock Washer
24.	7	110676	3/8" Flat Washer
25.	1	740037	Clutch, Standard
		740038	Clutch, Heavy Duty

* See Master List for Pump Part No.



(A) Denotes bolt holes in engine to locate corresponding holes in Pump Brkt.

DewEze Clutch Pump Kit #700008
Chevy 5.7L (350)
1988-1989
With Serpentine Belt

INSTALLATION INSTRUCTIONS

NOTE: Suction hose to pump must be wire braid hose; minimum 1" I.D. for 7 and 9 gpm pumps; 1 1/4" I.D. for 12 and 17 gpm pumps. Installations with smaller suction hoses will void the pump warranty.

1. Remove fan and top of fan shroud.
2. Drain radiator.
3. Loosen OEM Serpentine belt.
4. Remove OEM bolts in crankshaft pulley.
5. Install the DewEze Crankshaft Pulley (7) using three 3/8" X 4" NF bolts (14) and one 7/16" X 5 1/4" NF bolt (15).
6. Use two 5/16" flat washers and OEM nuts on fan stud bolts to hold water pump pulley in place until ready to reinstall the fan.

NOTE: This engine does not require a fan extension.

7. Remove OEM bolts from engine at holes A,B, and C.

NOTE: Radiator fluid will drain from hole A if not drained low enough.

8. Remove OEM bracket below alternator (see drawing). This will not be used.
9. Install pump mounting Bracket (1) using three 3/8" X 5" NC bolts (8).
At hole A, use 2.40" Spacer (2).
At hole C, use 3.10" Spacer (4).
At hole B; if there is no brace from OEM belt tensioner to Hole B, use 3.74" Spacer (3). If there is a brace in this position, use 3.10" Spacer (4) between DewEze bracket and Brace, and .40" Spacer (19) between Brace and engine (see drawing inset).
Tighten all bolts on mounting bracket.
10. Reinstall OEM Serpentine belt.

11. Assemble pump and clutch assembly and set assembly on mounting bracket with V-belts (18) around pulleys.
12. Install four 3/8" X 1 1/2" NC bolts (9) in pump assembly. Tighten nuts finger tight only at this time.
13. Align Clutch Pulley with Crankshaft Pulley using a straight edge across the front of the pulleys. Now tighten the four mounting bolts.
14. Install Idler Pulley (6) using 5/8" X 4" Bolt (10) and Lock Nut (16). Use the 1.12" Spacer (18), and Machine Bushings (11,12, and 13) as needed to align idler pulley with belts. Use idler pulley to tighten belts.
15. Fill radiator with fluid drained earlier.
16. Run engine, checking for vibration, alignment, or other installation problems.
17. Remove the two nuts and washers holding Fan Pulley in place and install Fan Assembly.
18. Reinstall top half of Fan Shroud.
19. Run engine again, checking for proper clearance and alignment.