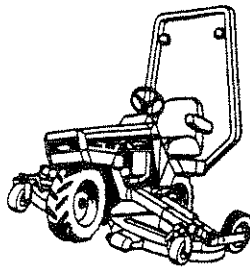


ATM
70



11/92

CONTENTS

To the owner1
 Safety section2
 Mower description3
 Pre-start instructions4
 Controls5
 Operating instructions6
 Driving hints7
 Mower deck service8
 Cutting height adjustment9
 Leveling adjustment10
 Service schedule11-12
 Service chart13
 Trouble shooting14-15

PARTS LISTS

Engine16
 Electrical17-18
 Hydraulic system19-20
 Hydraulic schematic21
 Blade spindle22
 Mower deck assembly23
 P.T.O. shaft and cover24
 Gearbox & Sprocket assembly25
 Steering head assembly26
 Foot control assembly28
 Mower chassis29-30
 Decal locations31-33

REGISTRATION

Date of Purchase ___/ ___/ ___

Dealer's Name _____ Phone No. _____

Serial Number-Machine _____

Serial Number-Engine _____

For 1992 series ATM70 Mowers, beginning serial number C001.

TO THE DEWEZE ATM70 (ALL TERRAIN MOWER) OWNER OR OPERATOR:

It is important that you take the time to read this manual carefully before operating the machine. You should be familiar with all safety precautions and operating and service procedures. Operator knowledge and familiarity will make a difference in how the machine will perform.

This OWNER'S MANUAL was written to help you realize the full benefits of the machine and to help you maintain it so it will give you long and productive service.

The objective of DewEze Manufacturing in the design of the ATM 70 was to create a mowing machine which can function as safely and comfortably on slopes and inclines as it can on level ground. The results are a mowing machine which will automatically adjust itself to keep the operator in a vertical position on all slopes up to 30 degrees.

If you have any questions that are not covered in this manual, please feel free to contact your nearest dealer.

REGARDING PRODUCT CHANGES:

Following publication of this manual certain changes in standard equipment and options may have occurred which would not be included in these pages. Your DewEze dealer is the best source for up to date information.

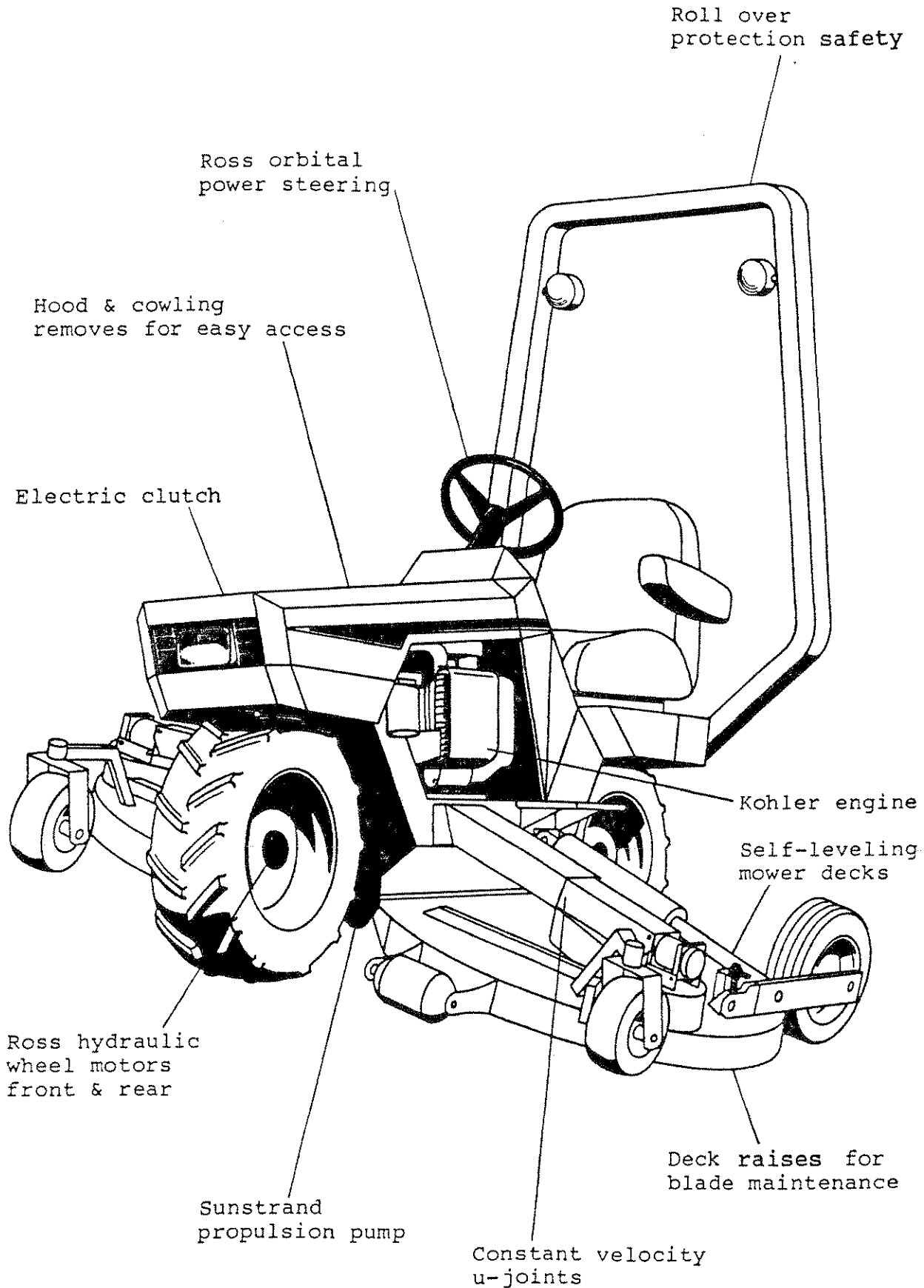
DewEze Mfg., Inc. reserves the right to change product specifications at any time without incurring obligation to provide such updates to previously manufactured units.

DEWEZE MANUFACTURING, INC.

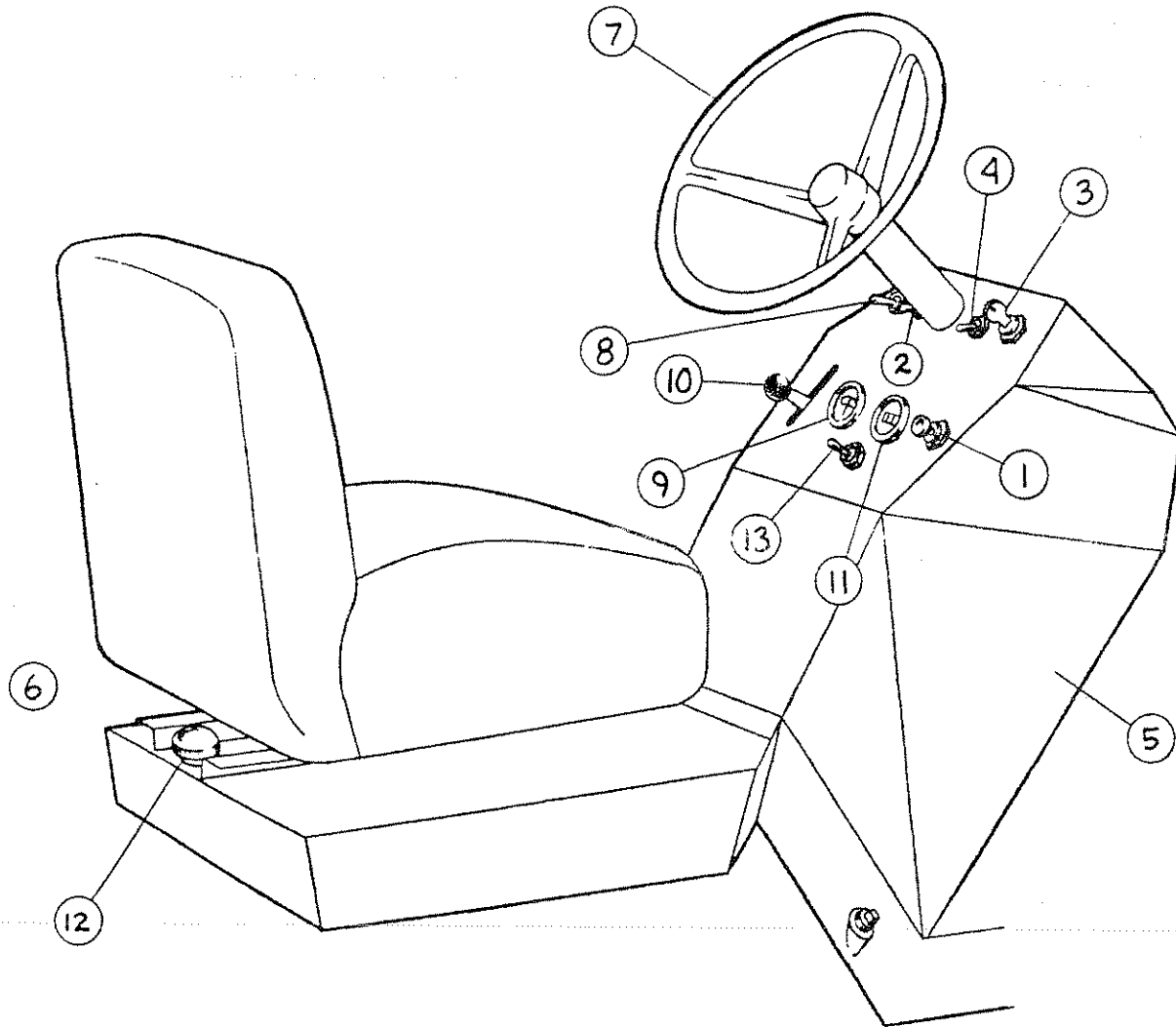
Rt. 2, Box 78
Harper, KS. 67058

Phone: 800-835-1042 (out of state)
316-896-7381 (in Kansas)
316-896-7129 (Fax)

ATM70 FEATURES



CONTROLS



<u>Item</u>	<u>Description</u>
1.	Choke
2.	Blade switch
3.	Ignition switch
4.	Light switch
5.	Cowling
6.	Seat adjustment lever (left side of seat)

<u>Item</u>	<u>Description</u>
7.	Steering Wheel
8.	Leveling switch
9.	Ammeter
10.	Throttle
11.	Hour meter
12.	Fuel fill cap
13.	Manual override switch

DRIVING THE DEWEZE ATM70

Driving the DEWEZE ATM70 with the automatic leveling device will be a new and different experience. After several minutes of driving, the smooth control and sturdy feel will become comfortable to you. The security of always sitting perfectly upright, and the feel of powerful, positive traction will give you confidence and comfort in most mowing situations. We urge EXTREME CAUTION lest your confidence in these features get you in trouble. REMEMBER: The features of the machine cannot replace good common sense!

SOME GUIDELINES:

1. Take some time to get used to the handling characteristics of the machine.
2. Always look before backing up.
3. **SLOW DOWN** over rough terrain.
4. **DO NOT** make sharp turns at high speeds.
5. Always keep your feet on the foot-rests while operating the machine.
6. Never attempt to operate the machine when it is malfunctioning.
7. Never attempt to climb slopes greater than 30 degrees.
8. If it is necessary to park the mower on a hill, be sure to **USE THE PARKING BRAKE AND CHOCK THE WHEELS!**
9. Wear appropriate, protective clothing while operating the mower.
10. **NEVER ALLOW PEOPLE IN THE AREA YOU ARE MOWING!**
11. Always avoid mowing over debris that could be projected from the mower discharge or do damage to the machine or anything in the area.
12. **FOR BEST RESULTS, OPERATE THE MOWER ENGINE AT FULL THROTTLE.** This will allow the blades to turn at optimum speed, and the leveling device to be the most responsive. Forward speed is easily controlled with the foot control pedal.

■■■■ WARNING ■■■■

SLOW DOWN WHEN TURNING DOWNHILL

FAST TURNS MAY NOT ALLOW LEVELING
SYSTEM TO FUNCTION PROPERLY

■■■■ DANGER ■■■■

TO AVOID PERSONAL INJURY, BEFORE LEAVING
THE SEAT, ALWAYS:

- TURN BLADE SWITCH OFF
- RETURN FOOT CONTROL TO NEUTRAL
- SHUT OFF ENGINE

MOWER DECK SERVICE

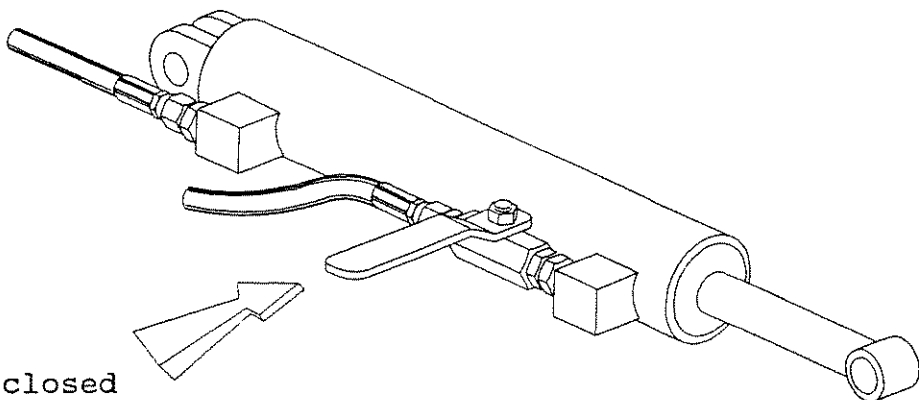
The DEWEZE ATM70 is equipped with a leveling system override. This override allows you to raise the mower decks for blade maintenance without the need for jacks. It also eliminates the need to crawl under the machine for blade and deck maintenance.

TO RAISE DECK:

- a. Move foot control to neutral and make sure that the switch for the mower blades is in the OFF position.
- b. Start engine with throttle at idle.
- c. Turn the leveling switch (item 8, page 5) to the OFF position.
- d. Dismount the tractor.
- e. Push the override switch (item 13, page 5) in the direction you want tractor to lean, away from the deck you wish to raise: hold switch until the tractor lays completely over.
- f. Release the switch and close the ball valve (refer to illustration below) on the leveling cylinder.
- g. Turn leveling switch on and deck will raise by itself.
- h. Turn the leveling switch to the OFF position.
- i. TURN ENGINE OFF!

TO LOWER DECK:

- a. Open the ball valve on the leveling cylinder (refer to illustration below) and deck will lower.
- b. After deck has lowered, with the foot control in neutral position, start the engine.
- c. Turn the leveling switch to the ON position: mower will return to the upright position.



Ball valve shown in closed position

CUTTING HEIGHT ADJUSTMENT

Stabilizer Wheel
Adjustment
(Left and Right)

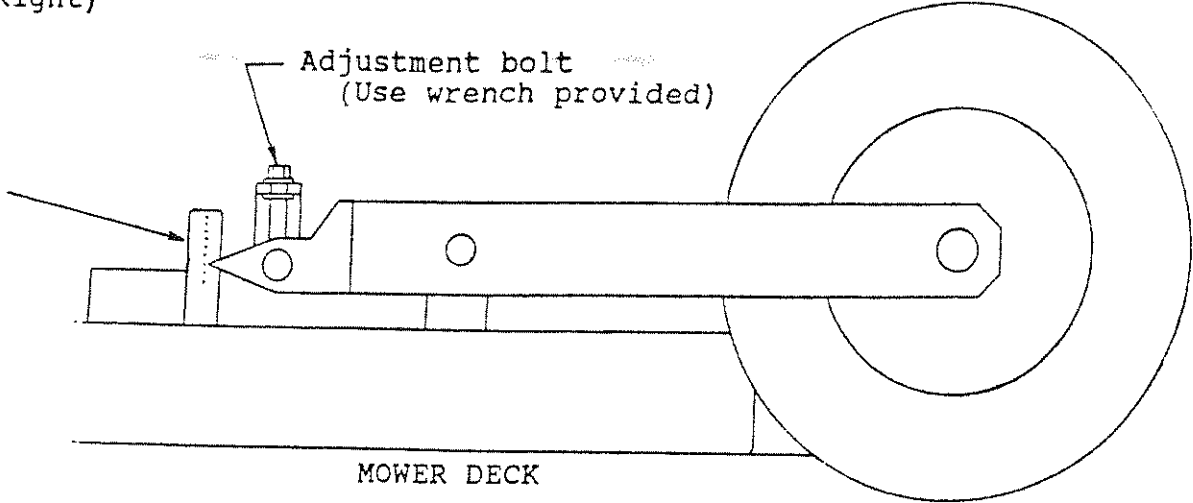
Stabilizer
Wheel

Height
Indicators:
2" Min.
5" Max.

Adjustment bolt
(Use wrench provided)

<<< FRONT

MOWER DECK

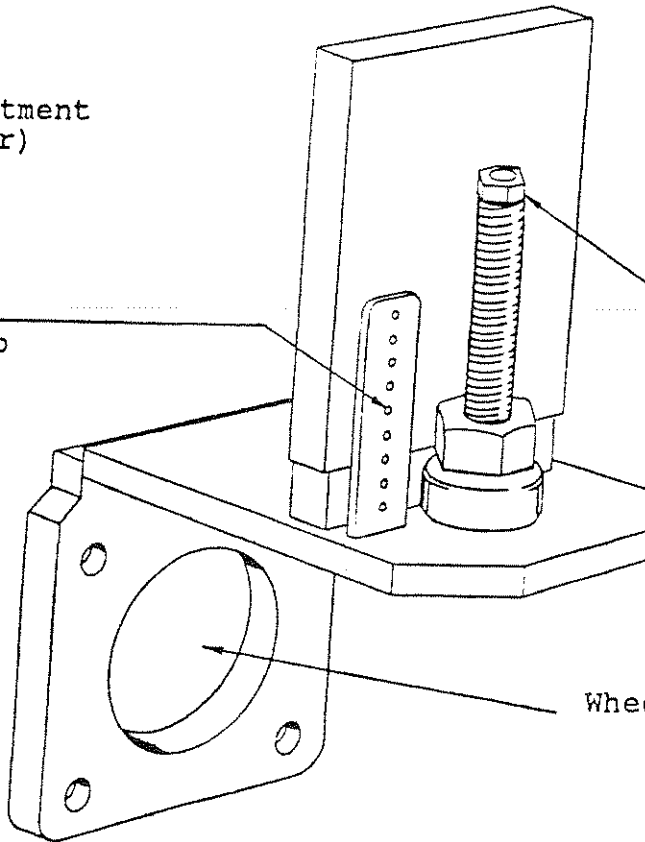


Drive Wheel
Height Adjustment
(Front & Rear)

Height
Indicator Tab
2" Min.
5" Max.

Adjustment Bolt
(Use wrench
provided)

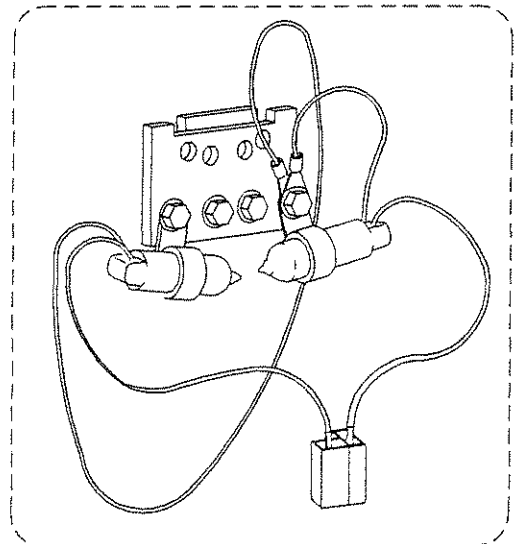
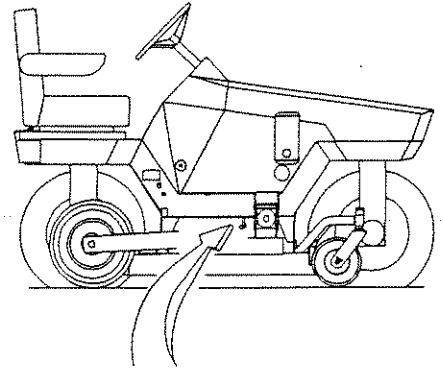
Wheel Motor



PROCEDURE FOR ATM70 LEVELING ADJUSTMENT

1. Make sure the mower is set up for level cut and is on level ground.
2. Start engine and push throttle control to full open.
3. Turn leveling switch (Item 8, page 5) to ON position.
4. Hold Manual Override Switch (Item 13, page 5) to the left until tractor is leaning fully to the left. Release switch.
5. If tractor does not return to upright, loosen mounting bolt on the LEFT mercury switch. Move outer end of the LEFT mercury switch DOWN slightly. Repeat Step 5 and adjust mercury switch until tractor returns to upright. Tighten mounting bolt.
6. If tractor returns past upright, loosen mounting bolt on the LEFT mercury switch. Move outer end of the LEFT mercury switch UP slightly. Repeat Step 5 and adjust mercury switch until tractor stops at upright. Tighten mounting bolt.
7. Repeat the above procedures, tilting tractor to the RIGHT, and adjusting the RIGHT mercury switch.
8. If tractor continues to move right and left after returning to upright, move the outer end of BOTH mercury switches UP slightly and repeat the above adjusting procedures.

MERCURY SWITCHES
(Looking from rear of mower)



SERVICE SCHEDULE

DAILY

1. Check fuel level ----- Use regular grade unleaded fuel.
2. Check engine oil level --- Use SAE 30 above 32 degrees F.
Use HD10W40 at or below 32 degrees F.
3. Check hydraulic oil level- Use 15W40 or 10W40 motor oil.
4. Clean engine air pre-
filter ----- Use warm soapy water and rinse.
5. Visually inspect: ----- Belts, bolts, fittings, and hoses
(see page 10 for (for signs of leaks or looseness);
locations) accumulator and engine (for signs of
obstruction of air cooling and excess
dirt).
6. Continually look and listen for signs of hydraulic malfunction
(excessive noise, sluggish control response, etc.). If signs
occur STOP IMMEDIATELY or serious damage to hydraulic
components could occur!
At the first sign of abnormal hydraulic function
check the hydraulic oil level. Change hydraulic
oil filter and refill oil as needed.

25 HOUR SERVICE

1. Change engine oil ----- Use SAE 30 above 32 degrees F.
and filter Use HD10W40 at or below 32 degrees F.
(Capacity, 1 3/4 Qts. with filter)
2. Clean air filter
3. Check battery water ----- Refill if necessary.
level.
4. Check oil level in ----- Refill as needed with 90 weight gear
splitter gear box lube.
5. Visually inspect ----- Bolts, hoses, and fittings-- for
signs of loosening. Keep air filter
assembly tight. Remove excess dirt
and debris which restricts air flow.
6. Lubrication ----- Grease front casters, caster swivels,
steering mechanism, and blade shafts.
7. Check tire pressure ----- 9 to 11 lbs. pressure in
both front and rear tires.
50 lbs. in stabilizer tires.
60 lbs. in front caster tires.
8. U-joints ----- Grease joints.
Make sure guards are in place.
9. Check outer gear boxes --- Fill with Mobil SHC 460 grease every
100 hrs.

KEEP BLADES SHARP AT ALL TIMES

SERVICE SCHEDULES (cont.)

Annual Service Schedule

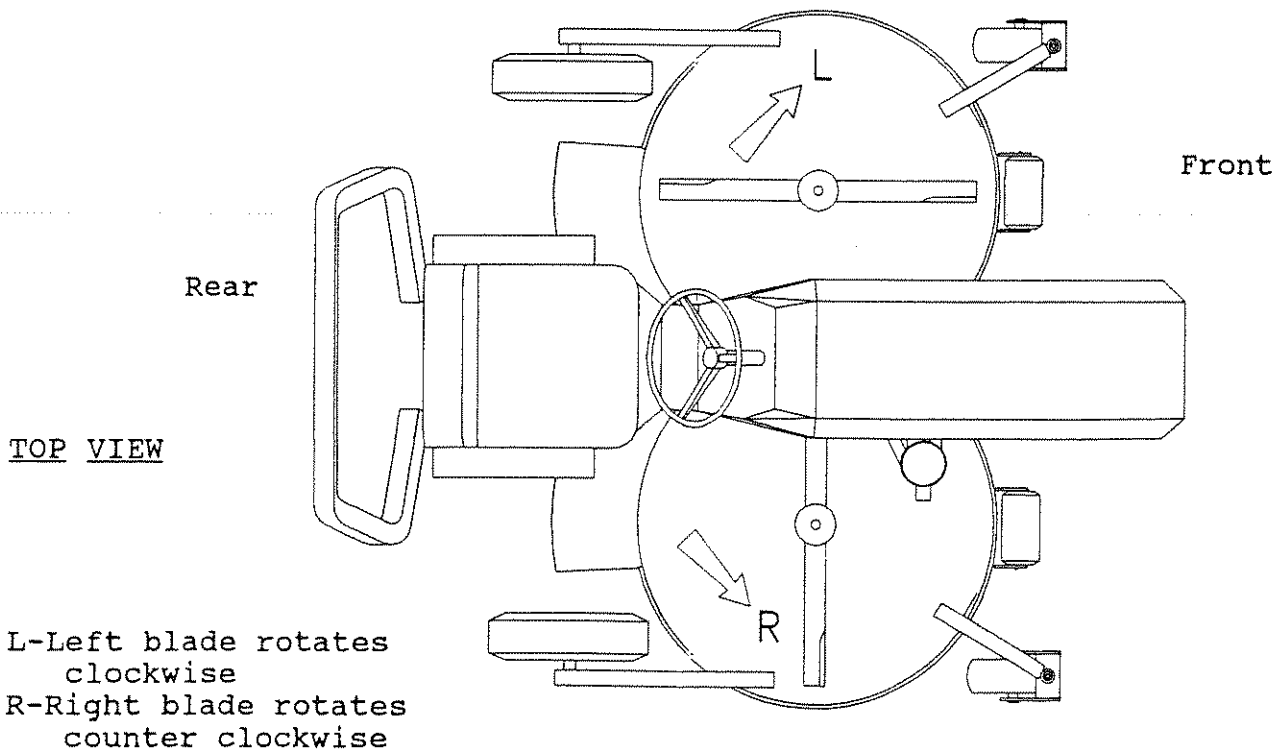
1. Replace hydraulic filter ----- Use a Zinga spin-on suction filter no. 520403.
annually or every 100 hours
2. Repack stabilizer wheels ----- Use a high quality Bearing Grease
3. Maintain oil level in ----- Use a high quality 90 weight splitter gear box.
gear lube.
4. Pack steering pivot bearing with grease.

For Storage During off season

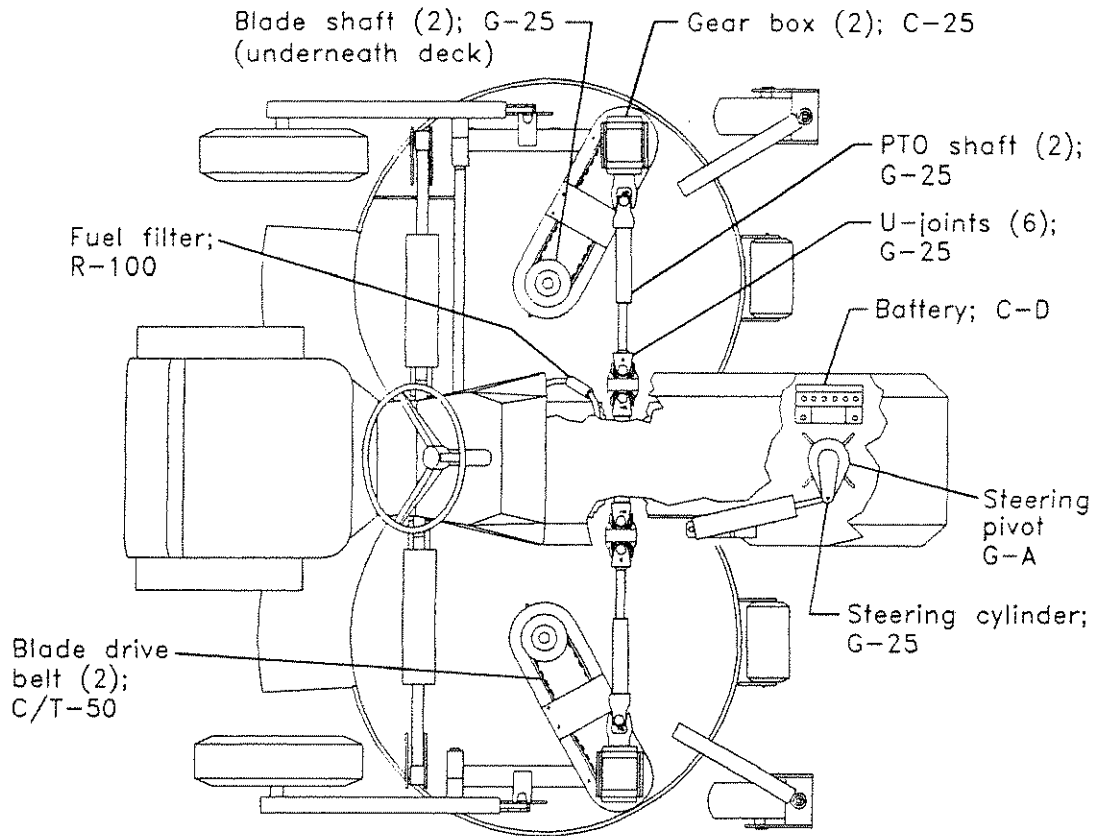
1. Shut off fuel at sediment bowl and run engine until it stops.
2. Fill tank with fuel for off season storage.
3. Maintain tire pressure as specified above.

BLADE TIMING INSTRUCTIONS (see sketch below)

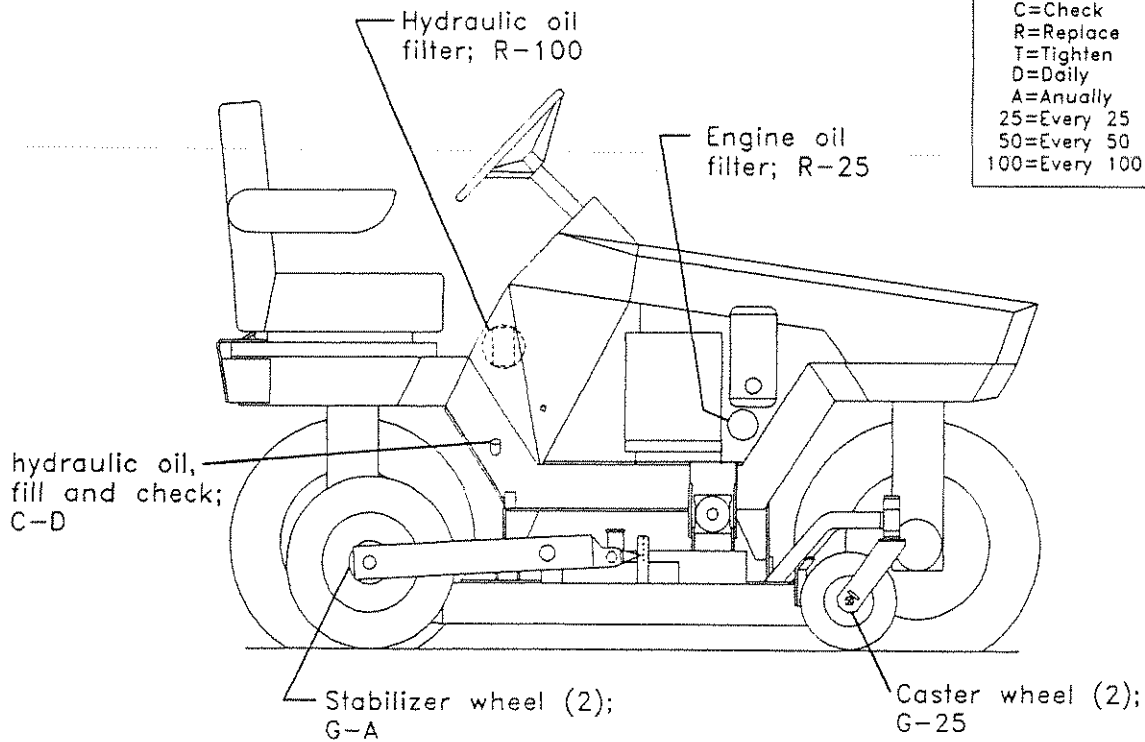
1. Loosen timing belt adjustment and remove cover plate.
2. Inspect belt for wear -- Replace if worn!
3. Position blades perpendicular to each other as shown.
4. Replace cover.
5. Tighten belt with adjustment screw so that it takes 10 lbs. pressure to depress belt 1/4" at check port in belt shroud.
6. Tighten all bolts (6) securely.



SERVICE CHART



G=Grease
C=Check
R=Replace
T=Tighten
D=Daily
A=Annually
25=Every 25 hours
50=Every 50 hours
100=Every 100 hours



TROUBLE SHOOTING

<u>SYMPTOMS</u>	<u>POSSIBLE CAUSE</u>	<u>REMEDY</u>
1. Engine fails to start	a. Choke not pulled -----	Pull choke
	b. Fuse blown -----	Replace fuse (30 amp)
	c. Dead battery -----	Recharge battery
	d. Dirty fuel filter -----	Replace fuel filter
	e. Out of fuel -----	Fill fuel tank
	f. Foot control not in neutral position -----	Move foot control to neutral.
<hr/>		
2. Loss of engine power	a. Dirty air cleaner -----	Clean or replace
	b. Transmission oil level low -----	Fill tank to proper level
	c. Parking brake too tight --	Adjust brake
	d. Dirty fuel filter -----	Replace fuel filter
<hr/>		
3. Noisy operation	a. Low oil level in hydraulic tank -----	Refill to proper level
	b. Low hydraulic pressure -----	See your dealer for repairs
	c. Air leak in pump supply line -----	Tighten or replace bad hose or fitting
	d. Low lubricant level in gear boxes -----	Refill with proper lube
	e. Blades out of time -----	See instructions (page 12)
	f. Blade spindle failure ----	Replace bearings
<hr/>		
4. Loss of hydraulic power	a. Low oil level in hydraulic tank -----	Refill to proper level
	b. Low hydraulic pressure -----	See your dealer for repairs

TROUBLE SHOOTING (cont.)

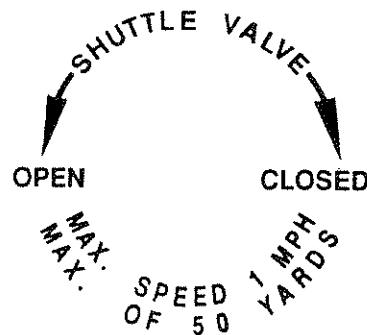
<u>SYMPTOM</u>	<u>POSSIBLE CAUSE</u>	<u>REMEDY</u>
5. Loss of auto-leveling	a. Fuse blown -----	Replace fuse (30 amp).
	b. Sensor(s) out of place or loose wire-	Re-install sensor and tighten.
	c. Sensor bad or wire lead broken --	Replace sensor.
	d. Electronic relays malfunctioning ----	Replace bad relay.
	e. Solenoid valve not working -----	1. Operate valve manually to assess cause of problem. 2. Replace solenoid.

NOTE: AUTO LEVEL WILL NOT WORK IF STEERING WHEEL IS HELD AGAINST STOP DURING EXTREME RIGHT OR LEFT TURN.

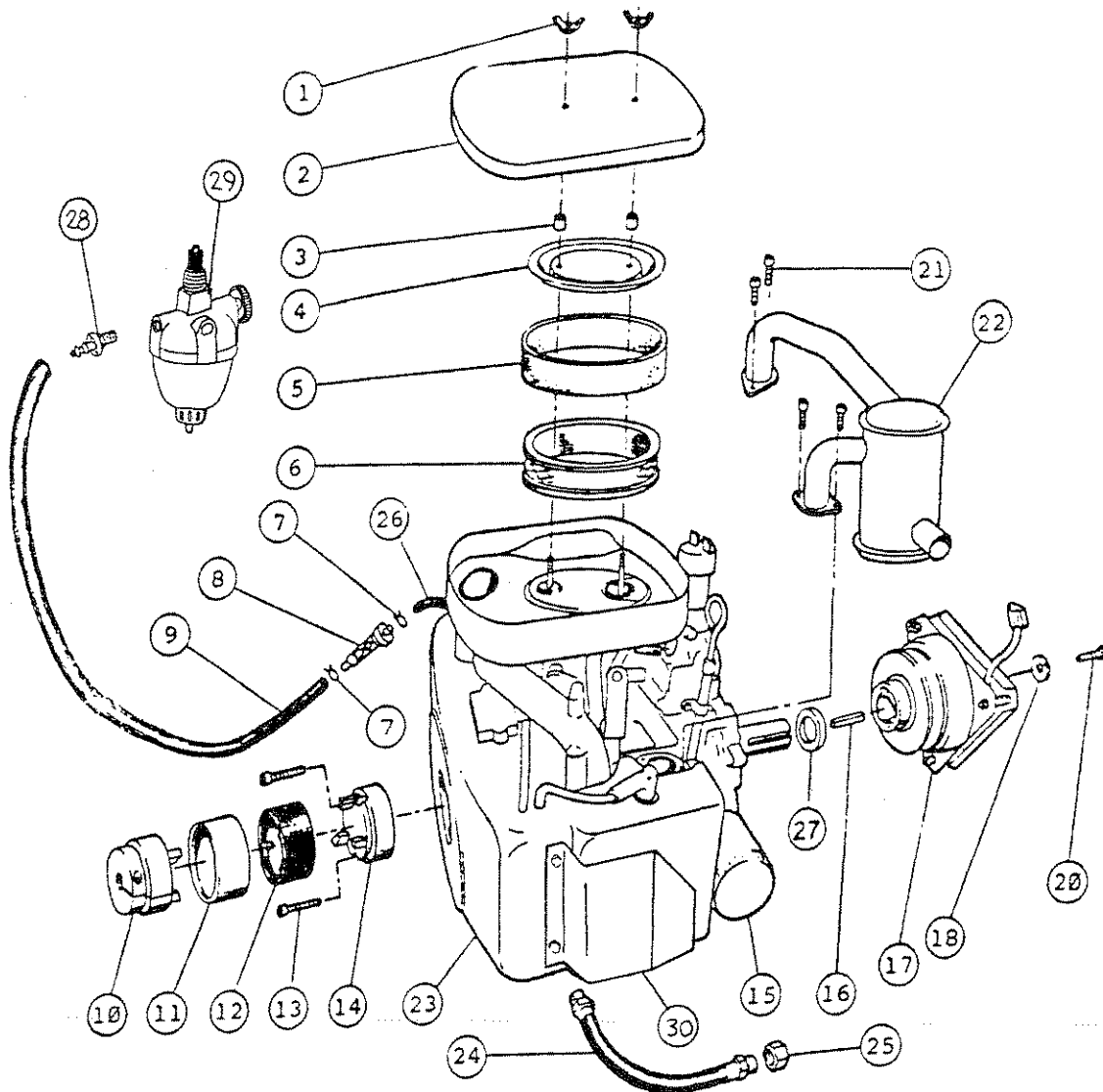
6. Mower blades will not engage	a. operator not seated correctly -----	Sit firmly in seat to contact safety switch.
	b. Loose belts-----	Be sure all belts are tight.
	c. Switch malfunction-----	Replace switch.

TO MOVE MOWER IN CASE OF ENGINE OR HYDRAULIC POWER FAILURE

- To move mower open shuttle valve located on right-hand side of cowling by rotating 180 degrees with a screwdriver.
- Mower may be moved a short distance with shuttle valve open.
- MOVING THE MOWER AT MORE THAN ONE M.P.H. FOR MORE THAN 50 YARDS MAY CAUSE SERIOUS DAMAGE TO THE WHEEL MOTORS AND HYDRAULIC PUMPS.**
- Close shuttle valve before operating mower.

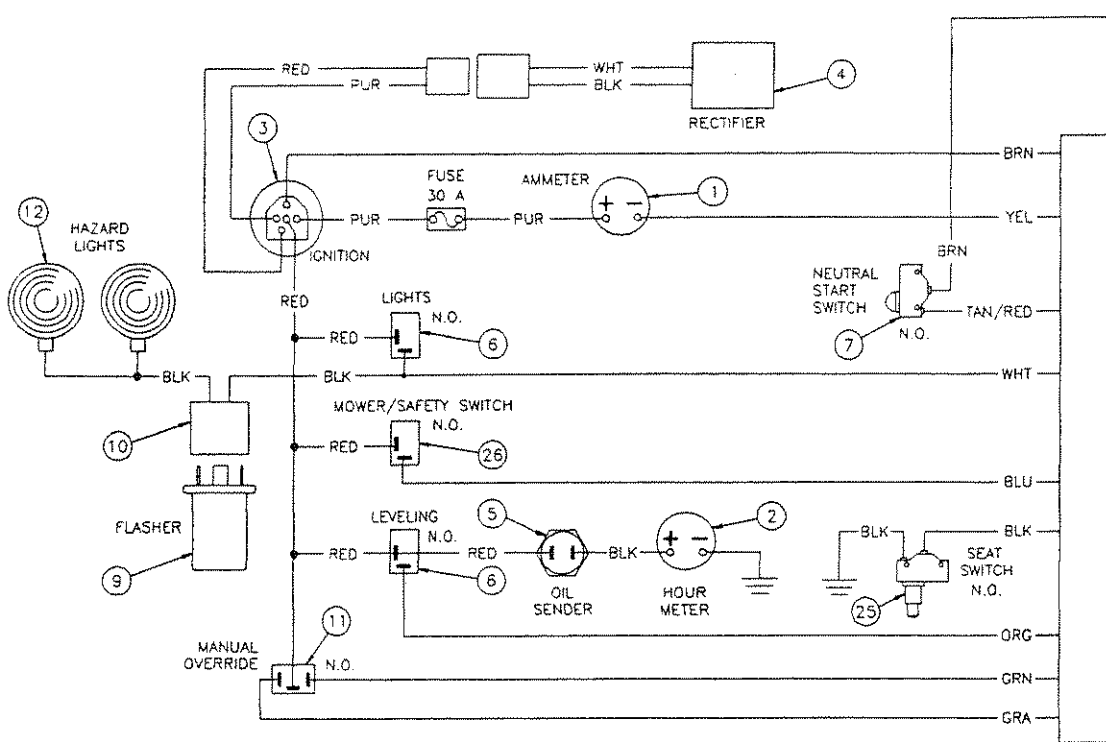


ENGINE COMPONENTS



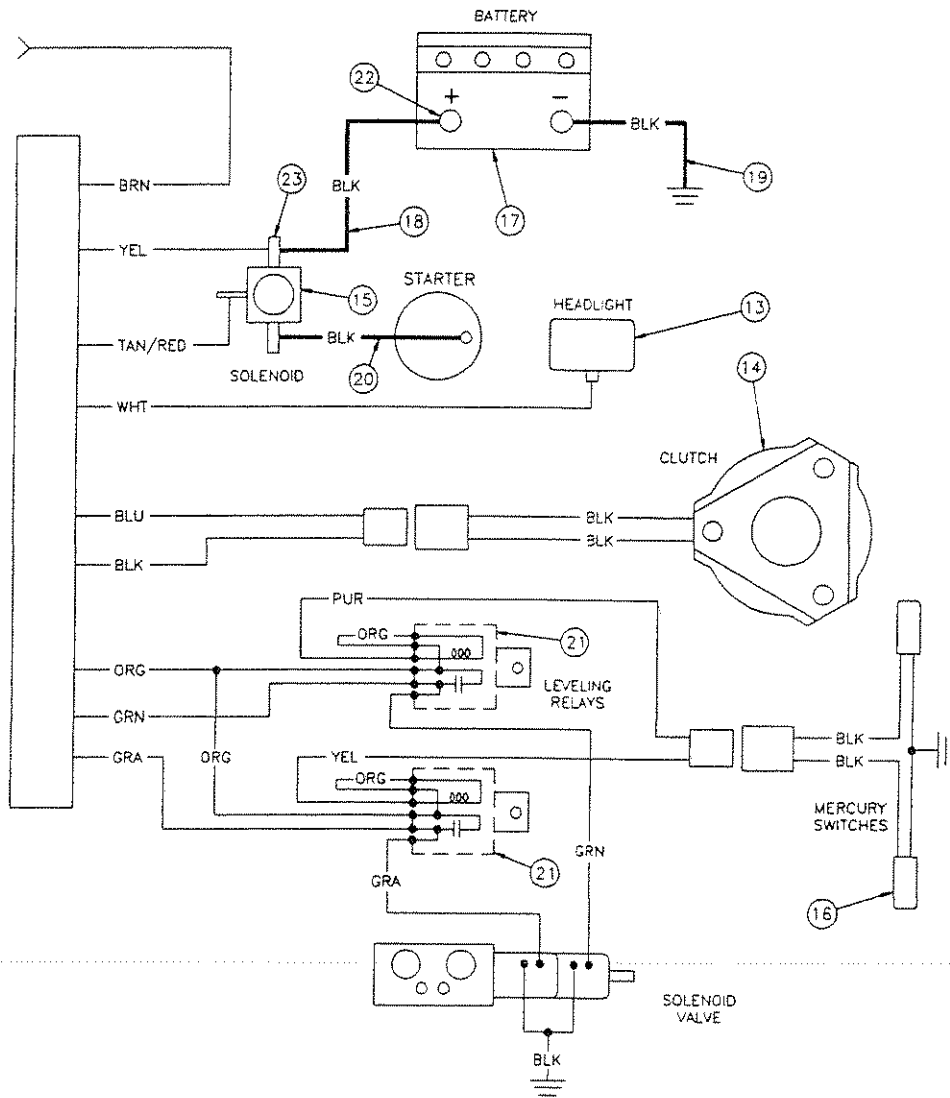
Item	Part No.	Description	Item	Part No.	Description
1.	540038	1/4" Wing nut	15.	540030	Oil filter
2.	540037	Filter cover	16.	510228	Key
3.	540035	Spacer	17.	540004	Clutch assembly
4.	540036	Plate	18.	511072	1/4" Machine bushing
5.	540033	Pre-cleaner	20.	540040	7/16" X 1 1/2" NF Bolt
6.	540034	Air filter	21.	510336	5/16" X 3/4" Socket head
7.	540032	Hose clamp	22.	510404	Exhaust system
8.	540031	Fuel filter	23.	540045	Engine
9.	540046	Fuel line	24.	520129	Oil drain hose
10.	540026	Engine coupler A	25.	500004	Cap
11.	540027	Retainer	26.	540049	Fuel line
12.	540028	Insert coupler	27.	510498	Chamfered Spacer
13.	540039	3/8" X 1 1/4" Socket head	28.	500192	Hose barb
14.	540029	Engine coupler B	29.	500188	Sediment bowl
			30.	540073	Heat shield

ELECTRIC SCHEMATIC CONSOLE HARNESS



1	530011	AMMETER
2	530009	HOUR METER
3	530016	IGNITION SWITCH
4	530029	RECTIFIER
5	530030	OIL PRESSURE SENDER
6	530007	SWITCH, SPST
7	530038	NEUTRAL START SWITCH
8	530097	CONSOLE WIRING HARNESS
9	530034	FLASHER
10	530025	FLASHER HARNESS
11	530020	SWITCH, SPDT
12	530032	HAZARD LIGHT

ELECTRIC SCHEMATIC
MOWER HARNESS

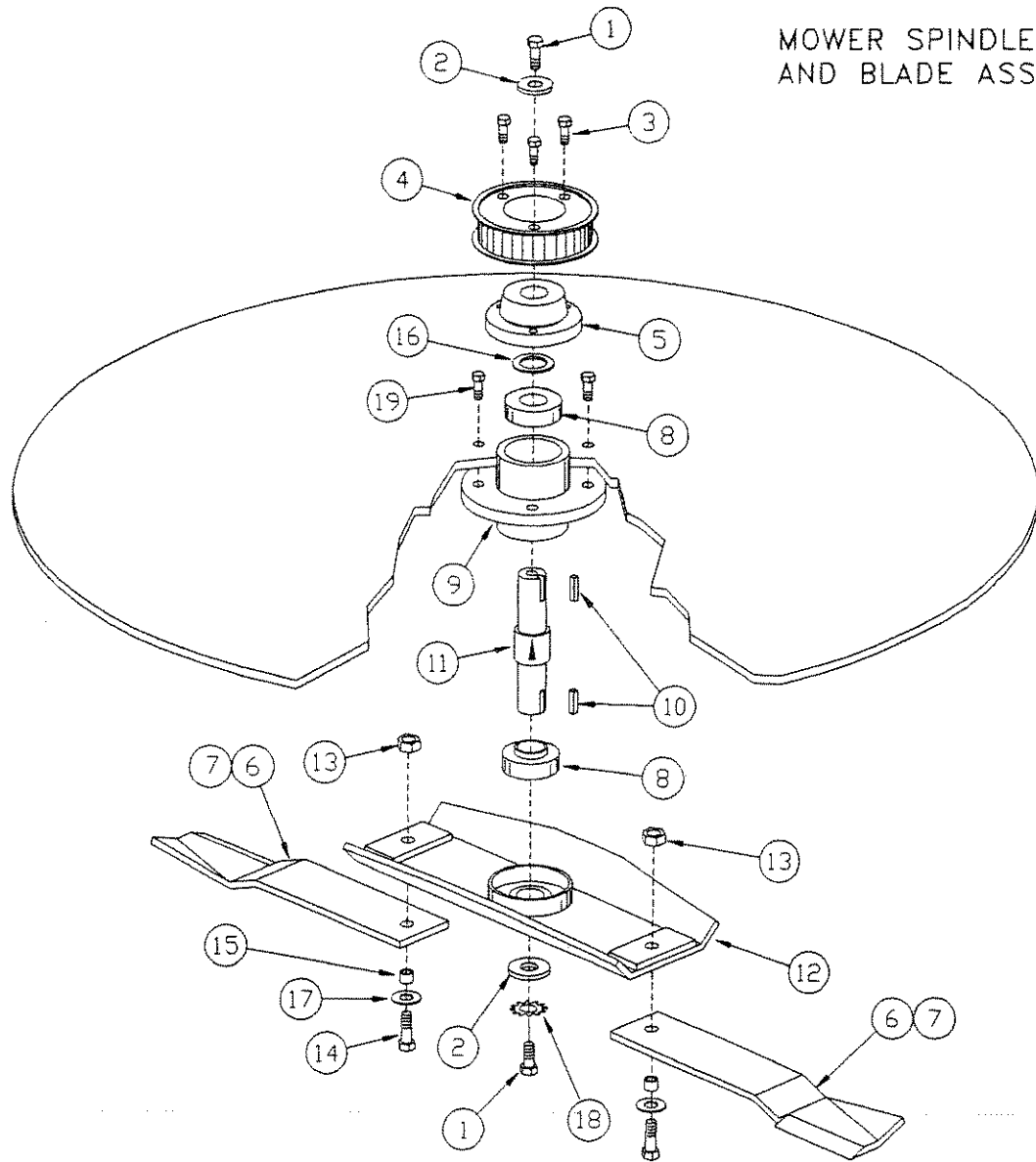


13	530010	HEADLIGHT
14	530004	BLADE CLUTCH
15	530018	SOLENOID
16	530076	MERCURY SWITCH
17	530017	BATTERY
18	530002	SOLENOID CABLE
19	530001	BATTERY GROUND CABLE
20	530003	STARTER CABLE
21	530028	RELAY
22	530035	INSULATOR, BATTERY TERM.
23	530036	INSULATOR, SOLENOID TERM.
24	530098	MOWER WIRING HARNESS
25	530059	SAFETY SWITCH / SEAT
26	530100	PULL-ON SWITCH / DECK SAFETY

PARTS LIST
HYDRAULIC SYSTEM

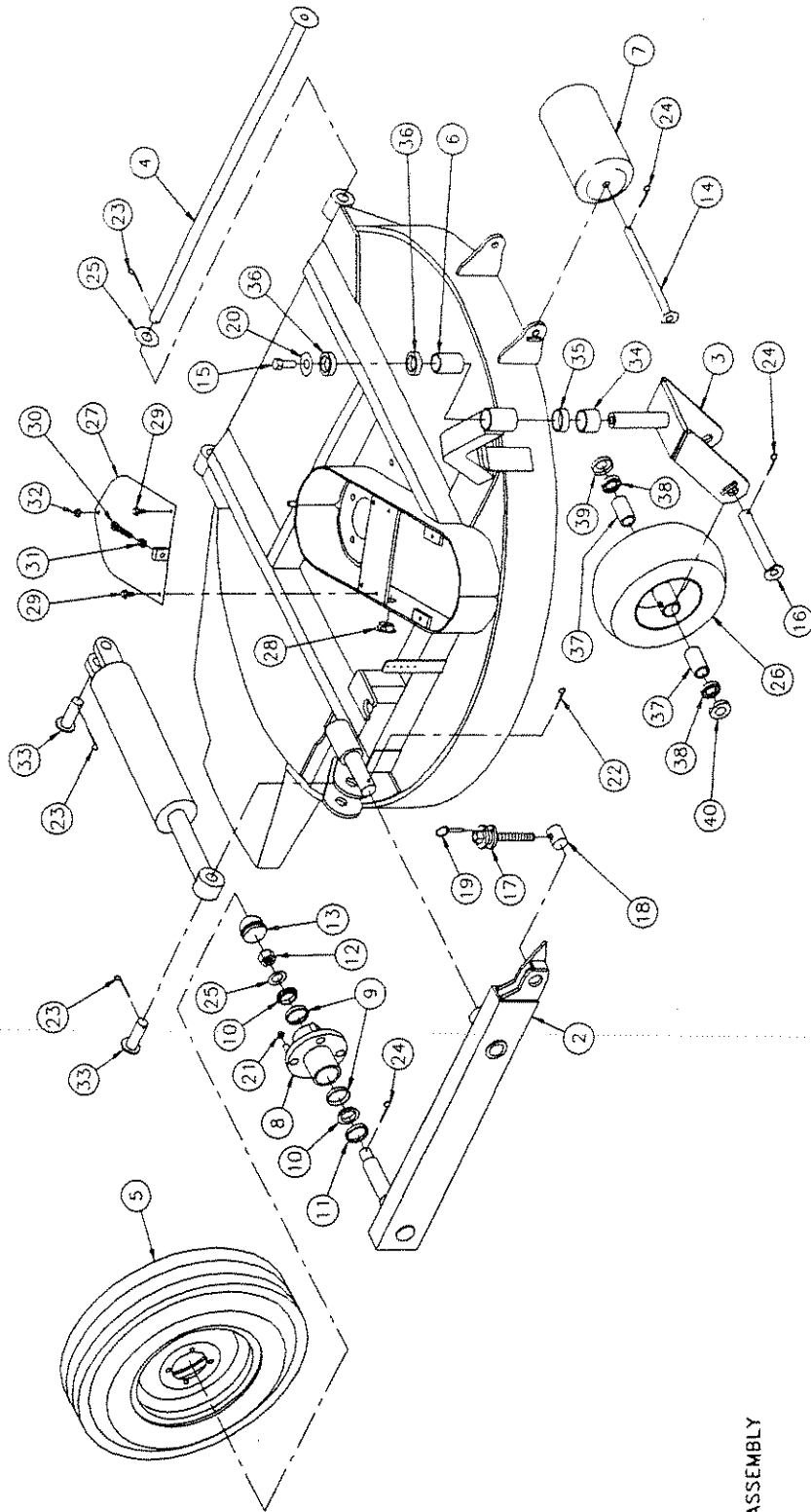
ITEM	PART #	DESCRIPTION	ITEM	PART #	DESCRIPTION
1	720079	ADAPTER, 90 DEGREE	38	520421	HOSE
2	520012	ADAPTER (2)	39	520420	HOSE
3	520017	ADAPTER, TEE (3)	40	520419	HOSE
4	520018	ADAPTER, TEE	41	520053	HOSE ASSEMBLY
5	520019	ADAPTER, 90 DEGREE	42	520055	HOSE ASSEMBLY (2)
6	520024	ADAPTER, 90 DEGREE (2)	43	520057	HOSE ASSEMBLY
7	520025	ADAPTER, 90 DEGREE	44	520058	HOSE ASSEMBLY
8	520026	ADAPTER, 90 DEGREE (2)	45	520405	HOSE ASSEMBLY
9	520033	ADAPTER (3)	46	520406	HOSE ASSEMBLY
10	520034	ADAPTER, 45 DEGREE (2)	47	520407	HOSE ASSEMBLY
11	520035	ADAPTER, 90 DEGREE (2)	48	520408	HOSE ASSEMBLY
12	520093	ADAPTER (2)	49	520409	HOSE ASSEMBLY
13	520094	ADAPTER, 45 DEGREE (2)	50	520410	HOSE ASSEMBLY
14	520095	ADAPTER, 90 DEGREE (2)	51	520411	HOSE ASSEMBLY
15	520116	ADAPTER (4)	52	520412	HOSE ASSEMBLY
16	520118	ADAPTER, 90 DEGREE (2)	53	520413	HOSE ASSEMBLY
17	520030	ADAPTER, 90 DEGREE LL	54	520414	HOSE ASSEMBLY
18	520435	ADAPTER, 90 DEGREE (2)	55	520415	HOSE ASSEMBLY (3)
19	520436	HOSE BARB	55	520461	HOSE ASSEMBLY
20	520437	ADAPTER (2)			
21	720072	STREET ELL			
22	720094	HOSE BARB			
23	520016	ADAPTER, TEE			
24	520438	CAP			
25	520433	BALL VALVE (2)			
26	500240	HOSE CLAMP #6 (2)			
27	520098	HOSE CLAMP 1/2 (4)			
28	520400	HYDRAULIC PUMP			
29	520163	STEERING PUMP			
30	520401	SOLENOID VALVE			
31	520403	FILTER ELEMENT			
32	520402	FILTER HEAD ASSEMBLY			
33	520092	ACCUMULATOR			
34	520001	STEERING CYLINDER			
35	520404	LEVELING CYLINDER (2)			
36	520005	WHEEL MOTOR (2)			
37	520162	STEERING COLUMN			

MOWER SPINDLE AND BLADE ASSEMBLY

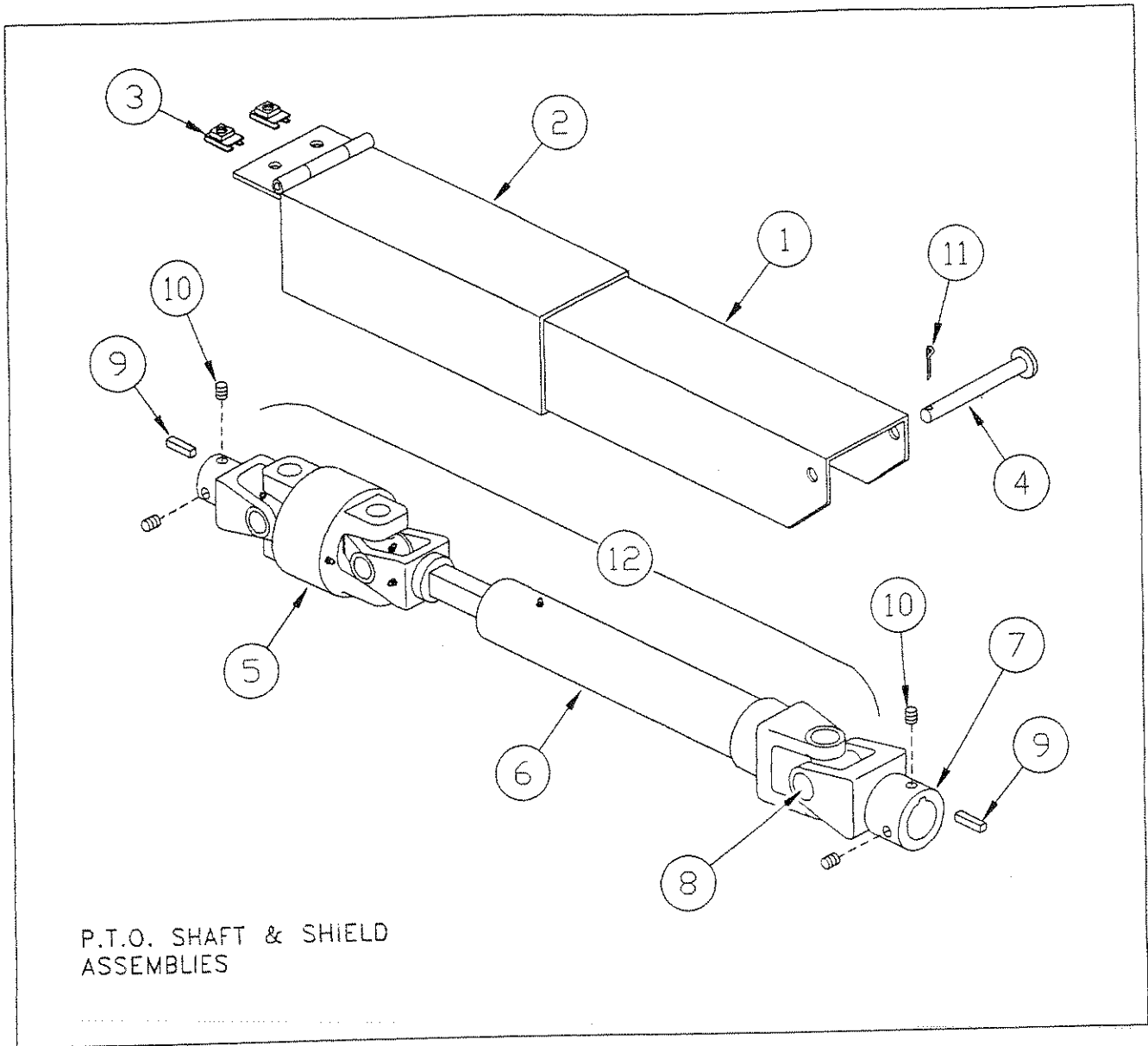


ITEM	PART #	DESCRIPTION	ITEM	PART #	DESCRIPTION
1	510500	1/2-20NF X 1.0 BOLT	11	510448	BLADE SPINDLE
2	500128	1/2 MACHINE BUSHING	12	511128	STUMP JUMPER
3	510242	CAP SCREW	13	540115	1/2-20NF LOCK NUT
4	510240	SPROCKET	14	110051	1/2-20NF X 1.5 GRD 8 BOLT
5	510241	BUSHING	15	511136	BUSHING
6	511134	BLADE-LEFT	16	510055	SPACER
7	511135	BLADE-RIGHT	17	500239	7/16 X .179 FLAT WASHER
8	510259	BEARING	18	510957	1/2 STAR WASHER
9	510413	BEARING HUB	19	510453	3/8NC X 1.0 WIZFLANGE BOLT
10	510228	1/4 X 1/4 X 1.0 KEY			

ITEM	PART NO.	DESCRIPTION
1	510303	Mower deck, right
2	510304	Mower deck, left
3	510074	Stabilizer arm, right
4	510075	Stabilizer arm, left
5	510167	Yoke, caster wheel
6	510051	Center pivot rod
7	510345	Wheel and tire assy.
8	510233	Wheel, stabilizer
9	510344	Tire, stabilizer
10	511149	Bushing
11	510047	Roller
12	510468	Castle nut
13	510469	Dust cap
14	510281	Roller pin
15	110050	Bolt, 1/2NCx3/4
16	510263	Pin, caster wheel
17	510093	Adjustment screw
18	510005	Pin, arm adjustment
19	510400	Cotterless hitch pin
20	510258	Flat washer, 7/16
21	510464	Lug nut
22	510175	Cotter pin
23	510462	Cotter pin
24	510463	Cotter pin
25	510461	Flat washer, 3/4
26	510347	Caster tire and wheel
27	510187	Cover plate
28	510186	Plug
29	510196	Wizflange bolt
30	510197	Bolt, 5/16NCx2-1/2 top
31	510208	Nut, 5/16NC
32	510096	Nut, 5/16NC wiz
33	510394	Pin, cylinder
34	510822	1" shim
35	510823	1/2" shim
36	510824	1/4" shim
37	511156	Bearing
38	511157	Seal
39	511158	End cap
40	511159	Cap, zerk end
41	510235	Hub assy. (inc. 8,9,10,13,21)



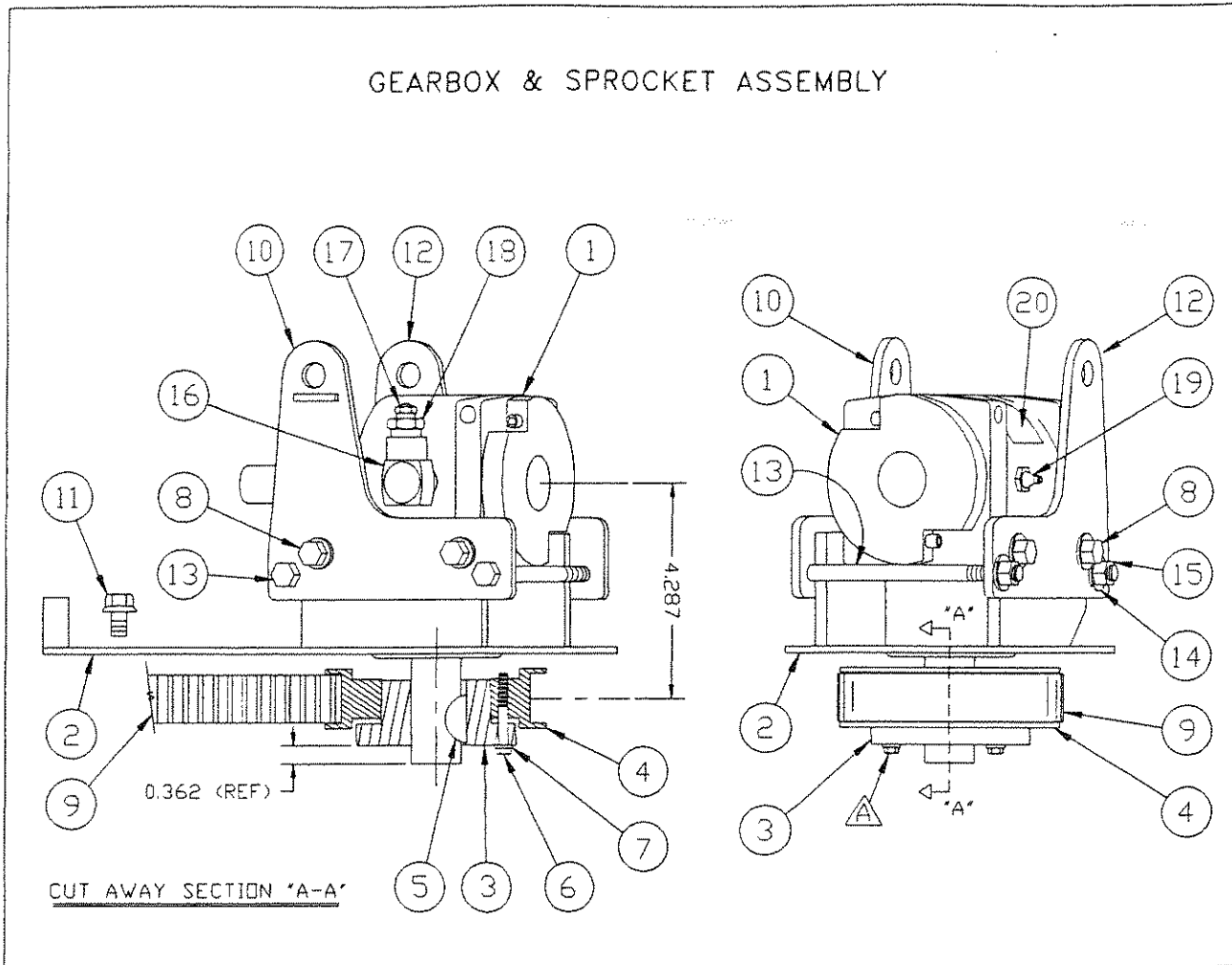
DECK ASSEMBLY



ITEM	PART NO.	DESCRIPTION
1	510446	PTO SHIELD (INNER)
2	510443	PTO SHIELD (OUTER)
3	510425	"U" TYPE RETAINER
4	510996	PIN
5	540041	U-JOINT / SHAFT ASSY
6	540042	SHAFT / YOKE ASSY
7	540043	YOKE / END
8	540044	U-JOINT / CROSS
9	510282	KEY
10	510161	* SET SCREW
11	510176	COTTER PIN
12	540047	PTO SHAFT ASSY

* USE LOCKTIGHT WHEN REPLACING

GEARBOX & SPROCKET ASSEMBLY



A CAP SCREW #510242 TO BE TORQUED AT 6 FOOT-POUNDS
 WITHOUT LUBRICANTS

ITEM	PART #	DESCRIPTION	ITEM	PART #	DESCRIPTION
1	540212	GEARBOX ASSEMBLY	11	510196	5/16-18NC X 1/2 WIZBOLT
2	510189	COVER PLATE - RIGHT	12	511174	SHIELD MT. BRKT.
	510190	COVER PLATE - LEFT	13	710390	5/16-18NC X 5 BOLT
3	510241	Q D BUSHING	14	510335	5/16 LOCK WASHER
4	510240	SPROCKET	15	510208	5/16-18NC NUT
5	410321	1/4 X 1 WOODRUFF KEY	16	510321 *	ADAPTER, 90°
6	510242	CAP SCREW (W/ITEM 4)	17	540148 *	VENT
7	510260	LOCK WASHER	18	540150 *	PIPE BUSHING
8	510992	5/16-18NC X 1 WIZBOLT	19	540149 *	GREASE ZERK
9	510261	TIMING BELT	20	500206 *	DECAL
10	511175	SHIELD MT. BRKT. W/STOP			

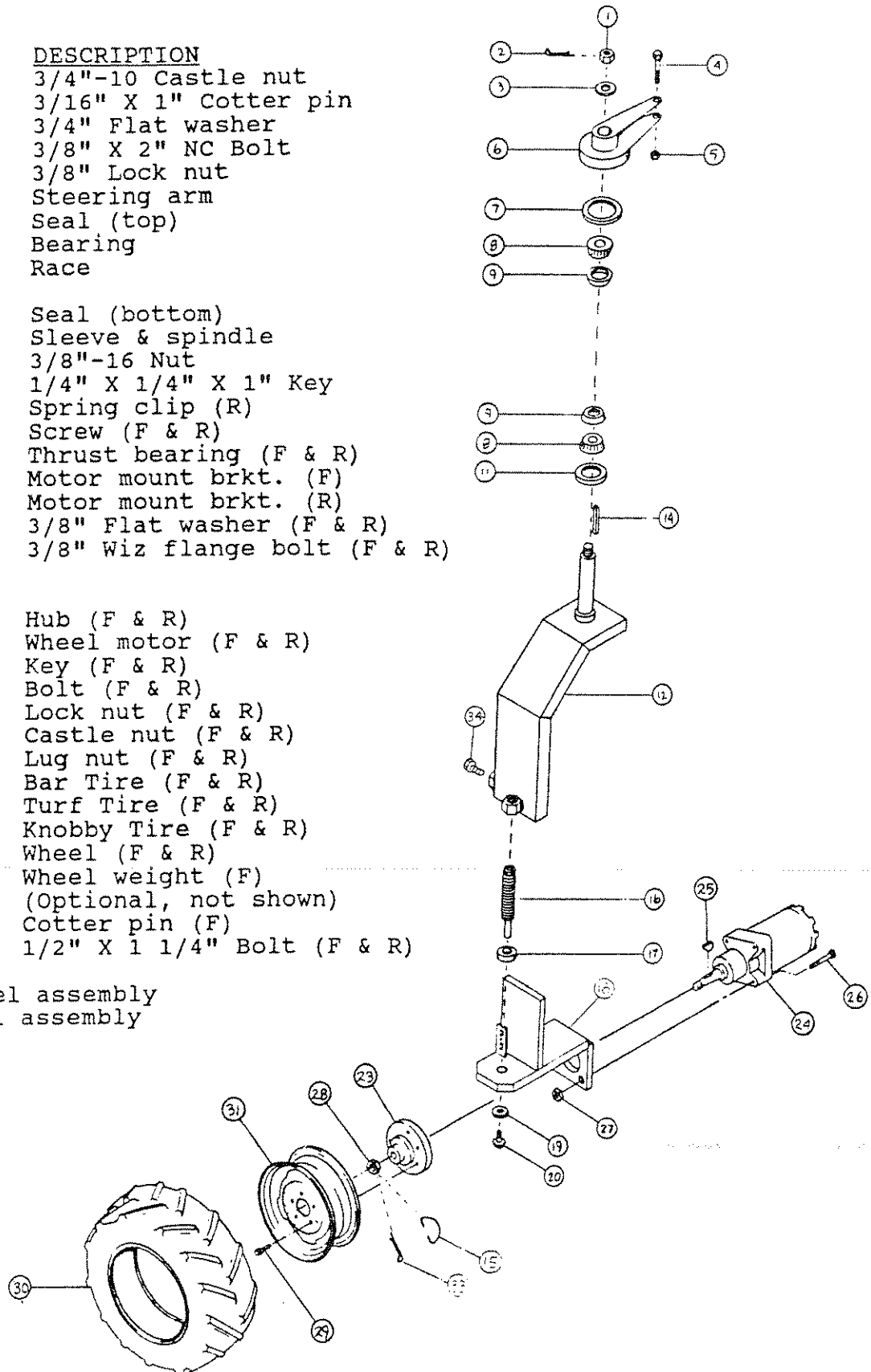
* THESE PARTS INCLUDED WITH GEARBOX ASSEMBLY #540212

STEERING HEAD ASSEMBLY

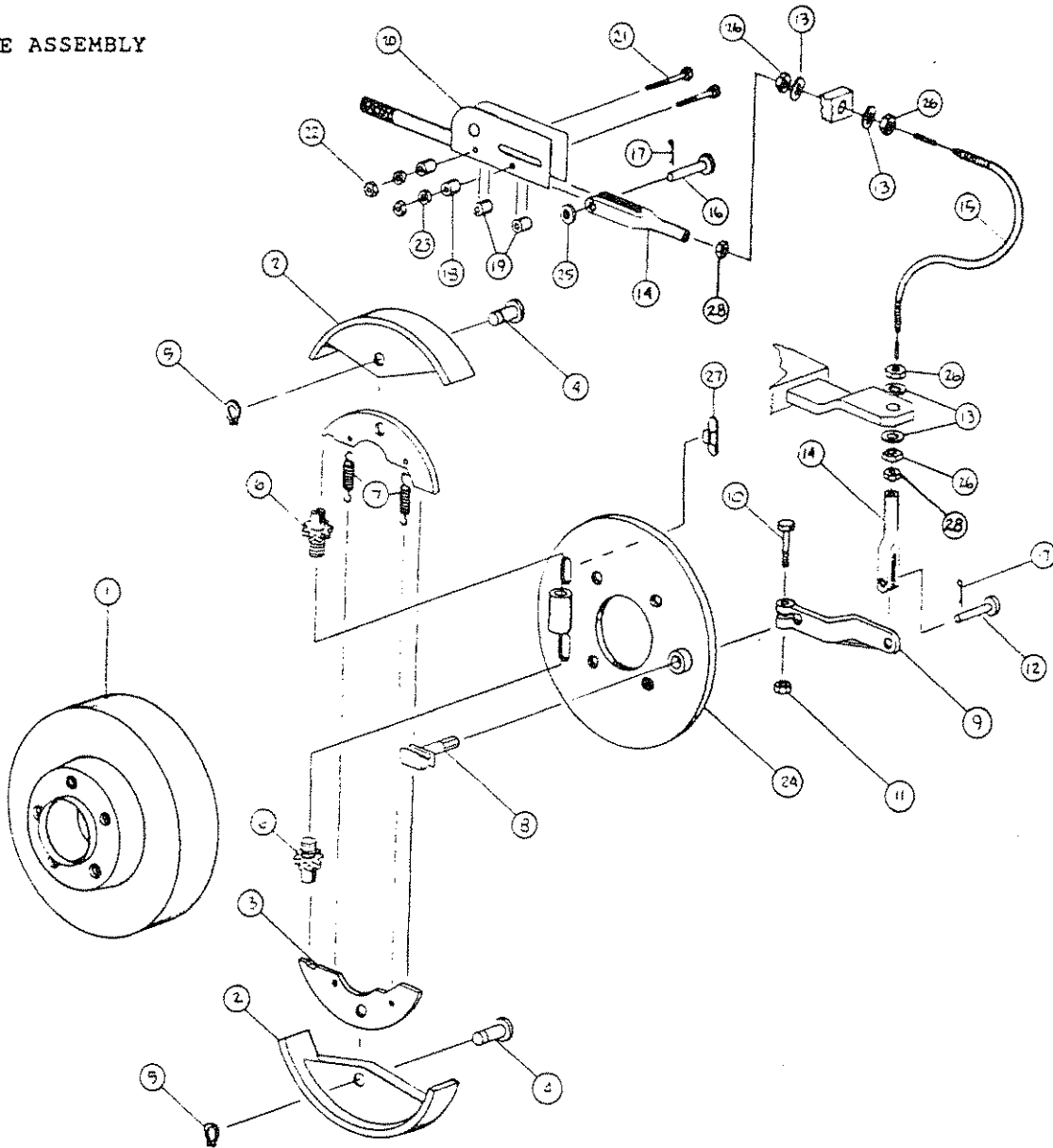
FRONT AND REAR DRIVE WHEEL ASSEMBLY

ITEM	PART NO.	DESCRIPTION
1.	510111	3/4"-10 Castle nut
2.	510112	3/16" X 1" Cotter pin
3.	510370	3/4" Flat washer
4.	410267	3/8" X 2" NC Bolt
5.	510471	3/8" Lock nut
6.	510152	Steering arm
7.	510108	Seal (top)
8.	510106	Bearing
9.	510209	Race
11.	510107	Seal (bottom)
12.	510246	Sleeve & spindle 3/8"-16 Nut
14.	510228	1/4" X 1/4" X 1" Key
15.	510988	Spring clip (R)
16.	510983	Screw (F & R)
17.	510397	Thrust bearing (F & R)
18.	510245	Motor mount brkt. (F)
	510489	Motor mount brkt. (R)
19.	510365	3/8" Flat washer (F & R)
20.	510401	3/8" Wiz flange bolt (F & R)
23.	510238	Hub (F & R)
24.	520005	Wheel motor (F & R)
25.	520135	Key (F & R)
26.	510213	Bolt (F & R)
27.	510396	Lock nut (F & R)
28.	510994	Castle nut (F & R)
29.	510239	Lug nut (F & R)
30.	510406	Bar Tire (F & R)
	510342	Turf Tire (F & R)
	511042	Knobby Tire (F & R)
31.	500181	Wheel (F & R)
32.	510697	Wheel weight (F) (Optional, not shown)
33.	510993	Cotter pin (F)
34.	510473	1/2" X 1 1/4" Bolt (F & R)

F = Front wheel assembly
R = Rear wheel assembly



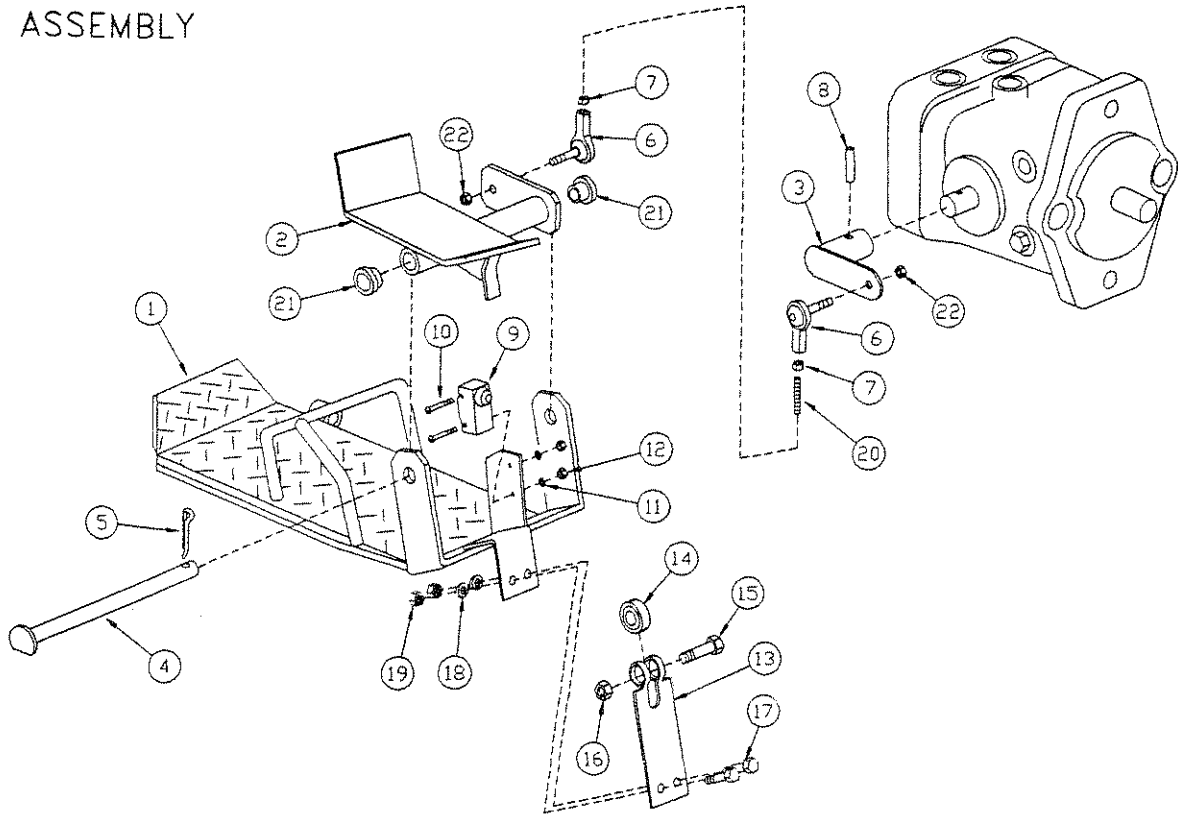
BRAKE ASSEMBLY



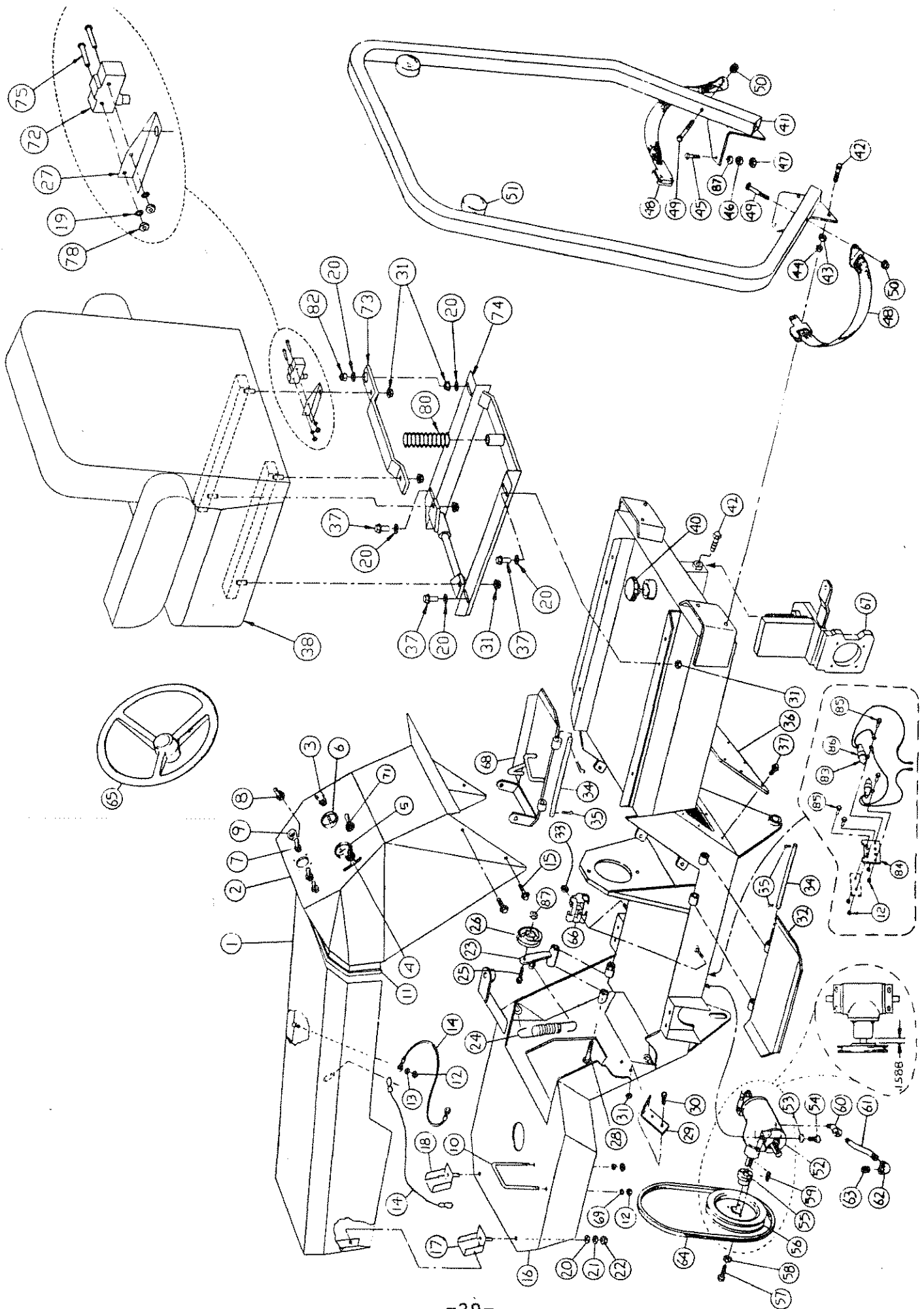
PARTS LIST

<u>Item</u>	<u>Part No.</u>	<u>Description</u>	<u>Item</u>	<u>Part No.</u>	<u>Description</u>
1.	550043	Brake drum	16.	550049	Pin
2.	550029	Brake shoe	17.	550050	Cotter pin
3.	550028	Shoe lever	18.	550018	Mount bushing
4.	550032	Anchor pin	19.	550019	Spacer
5.	550033	Retaining ring	20.	550042	Handle
6.	550034	Adjusting screw	21.	510366	3/8" X 2 1/2" NC Bolt
7.	550031	Spring	22.	510272	3/8" Nut
8.	550035	Cam	23.	510271	3/8" Lock washer
9.	550024	Brake arm	24.	550040	Back plate ass'y
10.	550045	Bolt	25.	510195	Flat washer
11.	510224	Nut	26.	540094	Jam nut
12.	550048	Clevis pin	27.	550038	Plug
13.	540095	Star lock washer	28.	510502	Nut
14.	550046	Yoke			
15.	550027	Brake cable			

FOOT CONTROL ASSEMBLY



ITEM	PART #	DESCRIPTION
1	540188	RIGHT FOOTPLATE ASSY
2	540186	PEDAL ASSY
3	540181	TRACTION LEVER ASSY
4	540074	PEDAL SHAFT ASSY
5	510176	COTTER PIN 1/8 X 1.0
6	540075	ROD END BEARING
7	510478	NUT 1/4-28
8	500243	ROLL PIN 1/4 X 1.0
9	530038	NEUTRAL SWITCH
10	540089	SCREW 6-32 X 1.0
11	540091	STAR WASHER
12	540090	NUT 6-32
13	540080	LEAF SPRING
14	540079	BEARING
15	300006	BOLT 5/16-18 X 1.50
16	410222	LOCK NUT 5/16-18
17	710492	BOLT 1/4-20 X .50
18	510221	LOCK WASHER 1/4
19	510224	NUT 1/4-20
20	540182	ALL THREAD 1/4-28 X 1.75
21	540059	BRASS BUSHING
22	540085	LOCK NUT 1/4-28



MOWER CHASSIS

ITEM	PART NO.	DESCRIPTION	ITEM	PART NO.	DESCRIPTION
1.	510081	Hood	44.	510225	1/2"-13 nut
2.	510082	Cowling	45.	510063	3/8"-16 X 1" bolt
3.	550015	Choke	46.	510271	3/8" lock washer
4.	550016	Throttle	47.	510272	3/8"-16 nut
5.	530011	Ammeter	48.	500064	Seat belt
6.	530009	Hour meter	49.	510474	7/16"-20 X 2 3/4" bolt
7.	530007	Toggle switch	50.	510475	7/16"-20 lock nut
8.	530019	switch boot	51.	530032	Hazard light
9.	530016	Ignition switch	52.	540204	Splitter gear box
10.	500030	Battery strap	54.	510336	5/16"-18 skt head
11.	510062	edge molding / cowling	55.	510269	Bushing
12.	510224	1/4"-20 nut	56.	510331	Pulley
13.	510322	1/4" flat washer	57.	510242	1/4" X 1 3/8" Bolt
14.	500029	Hood cable	58.	510221	1/4" lock washer
15.	510401	3/8-16" X 3/4" Flange bolt	59.	510282	Key
16.	510064	Frame	60.	510321	Adaptor, 90 degree
17.	510362	Grill-left	61.	510332	1/4" pipe
18.	510363	Grill-right	62.	510323	1/4" 90 degree ell
19.	540091	#6 Star washer	63.	510477	1/4" plug
20.	510195	5/16" flat washer	64.	540001	Belt
21.	510335	5/16" lock washer	65.	550004	Steering wheel
22.	510208	5/16"-18 nut	66.	510496	Hose clamp
23.	540211	Belt tightener bracket	67.	510488	Motor brkt assembly
24.	540025	Spring	68.	540188	Pedal brkt assembly
25.	500238	1/2-13" X 1.75" bolt	69.	510221	Lock washer
26.	540208	Bearing	70.	520138	Dipstick
27.	511133	Switch bracket	71.	530020	Override switch
28.	510472	5/16"-18 X 4" bolt	72.	530059	Switch
29.	510444	Clutch stop	73.	510587	Switch activater
30.	510090	5/16"-18 X 1" bolt	74.	510594	Seat mount bracket
31.	510096	5/16"-18 flange nut	75.	540089	6-32 X 1" bolt
32.	510181	Footrest	77.	510096	5/16" Wiznut
33.	510497	Nut	78.	540090	6-32 nut
34.	510034	Hinge pin	79.	510195	5/16" Flat washer
35.	510249	Cotter pin	80.	510509	Spring
36.	510315	Inspection plate	81.	510065	5/16" X 1 1/4" NC bolt
37.	510476	5/16"-18 X 3/4" flange bolt	82.	410222	5/16" Lock nut
38.	510061	Seat	83.	530082	Mercury switch (2)
39.			84.	511048	Bracket, switch
40.	500069	Gas cap	85.	540084	1/4" x 3/4" Wiz bolt
41.	510395	R.O.P.S. roll bar	86.	200019	Adel clamp
42.	510473	1/2"-13 X 1 1/4" bolt	87.	510396	1/2-13 Lock nut
43.	510219	1/2" lock washer			

ATM70 DECAL LOCATIONS

DANGER
DO NOT STAND NEAR
MACHINE WHEN IN OPERATION

500036

DANGER
ENTANGLEMENT IN ROTATING
DRUMS CAN CAUSE
SERIOUS INJURY OR DEATH
KEEP ALL SHIELDS IN PLACE
AVOID CONTACT WITH
ROTATING PARTS

500035

DANGER
DO NOT STAND NEAR
MACHINE WHEN IN OPERATION

500036

DANGER
WHIRLING BLADES
DO NOT PLACE HANDS
OR FEET UNDER DECKS

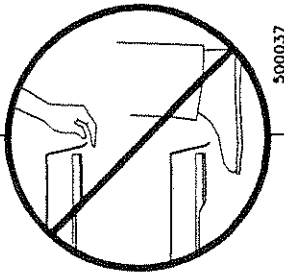
500034

DANGER
WHIRLING BLADES
DO NOT PLACE HANDS
OR FEET UNDER DECKS

500034

DANGER
KEEP COVERS IN PLACE WHILE
MACHINE IS IN OPERATION

500038



DANGER
KEEP COVERS IN PLACE WHILE
MACHINE IS IN OPERATION

500038

ATM70 DECAL LOCATIONS

LOCATED
INSIDE HOOD

⚠ DANGER

AVOID SKIN CONTACT WITH BATTERY ACID

Always wear eye protection when checking battery, acid can cause serious injury to skin and eyes. If contact occurs, flush immediately with water and seek physician immediately. Acid will also damage clothing.

DO NOT ALLOW OPEN FLAME NEAR THE BATTERY WHILE CHARGING

Hydrogen gas forms inside the battery, this gas is both toxic and flammable, and may cause an explosion if exposed to an open flame. Always remove the negative ground first and replace it last.

DO NOT OVERFILL BATTERY

Electrolyte may overflow and damage paint, wiring or structure. When adding the battery, use soap and water. Be careful not to spill electrolyte on the battery. The vents inside the hood to clean overheat off the terminals.

500050

LOCATED
INSIDE HOOD

⚠ WARNING

HYDRAULIC FLUID ESCAPING UNDER PRESSURE CAN PENETRATE SKIN

HYDRAULIC FLUID MAY ALSO CAUSE INFECTION IN A MINOR CUT OR OPENING IN THE SKIN; IF EXPOSED TO HYDRAULIC FLUID, SEE A DOCTOR AT ONCE.

- TO FIND A LEAK UNDER PRESSURE, OPEN HOSE AND OR USE PRESSURE WOOD-NEVER USE YOUR FINGERS.
- TO RELIEVE ALL PRESSURE IN SYSTEM, TURN ENGINE OFF, AND LOWER ATTACHMENT.

BEFORE APPLYING PRESSURE TO HYDRAULIC SYSTEM, MAKE SURE ALL CONNECTIONS ARE TIGHT AND ALL HOSES AND LINES ARE IN GOOD CONDITION.

500049

500049

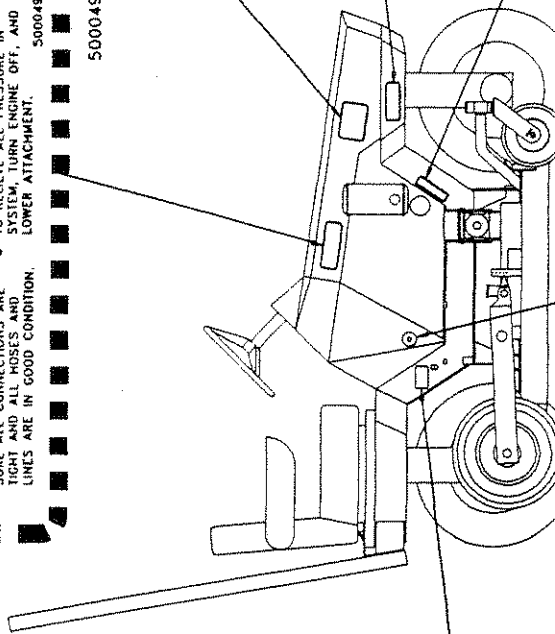
⚠ WARNING

AFTER ENGINE HAS BEEN RUNNING THE MUFFLER WILL BE HOT

500046

WHEN CHANGING OIL FILTER, REMOVE SHEET METAL BAFFLES UNDER THE CYLINDER BARRELS AND CLEAN DIRT OUT OF THE COOLING FINS

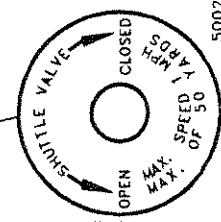
500056



HYDRAULIC SYSTEM OIL

Use Engine Oils Per S.A.E. J183 ONLY 15W40 or 10W40


500211



500237

ATM70 DECAL LOCATIONS

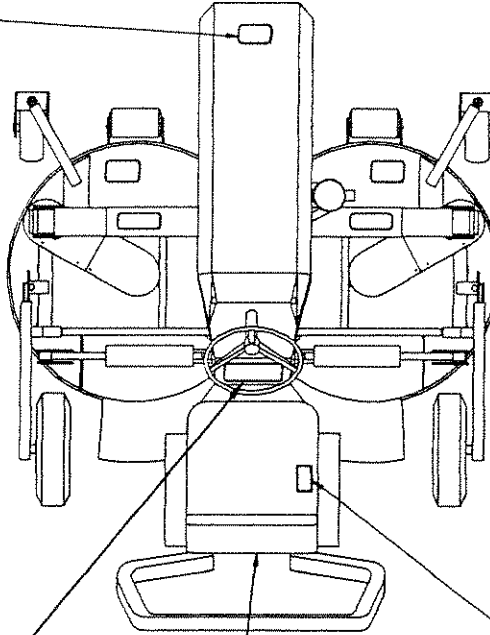
LOCATED
INSIDE HOOD


WARNING 

TO AVOID PERSONAL INJURY:
READ OPERATORS MANUAL BEFORE PERFORMING
MAINTENANCE ON MOWER BLADES

- PLACE CONTROL LEVER IN NEUTRAL
- PARK BRAKE IN LOCK POSITION
- MOWER BLADES CLUTCH SWITCH IN OFF POSITION
- TURN IGNITION KEY IN OFF POSITION AND
REMOVE KEY
- BLOCK DECK IN HIGHEST POSITION

5000051



WARNING 

READ OWNERS MANUAL BEFORE
ATTEMPTING TO OPERATE THIS MACHINE

- Never allow persons to operate this machine without proper instruction or allow children to operate the machine.
- Never carry passengers
- Never direct discharge of material from the mower deck toward bystanders
- If loading system malfunctions, immediately turn down till to level ground and stop machine
- Never drive on a rut (softspot) that is deeper than 30
- Before reaching ramps, embankments, or adjustments, turn blades clutch to OFF, turn the engine OFF.
- Remove the ignition key
- Before dismounting, turn off blades. Pull shift lever down and engage parking brake. Stop engine and remove ignition key

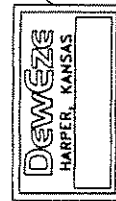
5000044

GASOLINE DANGER INSTRUCTIONS 

- DO NOT SMOKE WHILE REFUELING.
- DO NOT FILL TANK WITH ENGINE RUNNING, OR WHILE ENGINE IS HOT.
- ALLOW ENGINE TO COOL BEFORE STORING MACHINE INSIDE A BUILDING. STORE AWAY FROM OPEN FLAME OR SPARK IF THERE IS FUEL IN TANK.

5000048

LOCATED
REAR OF FRAME



LOCATED
TOP OF FRAME
UNDER SEAT